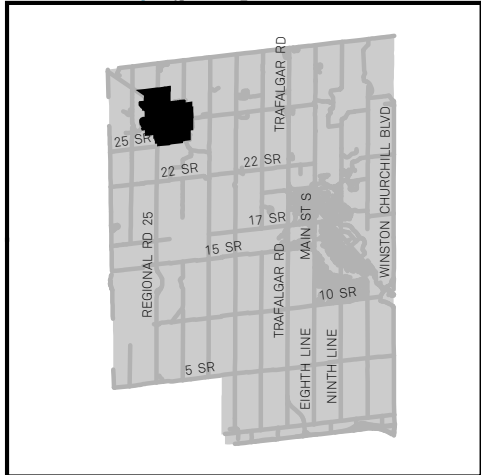
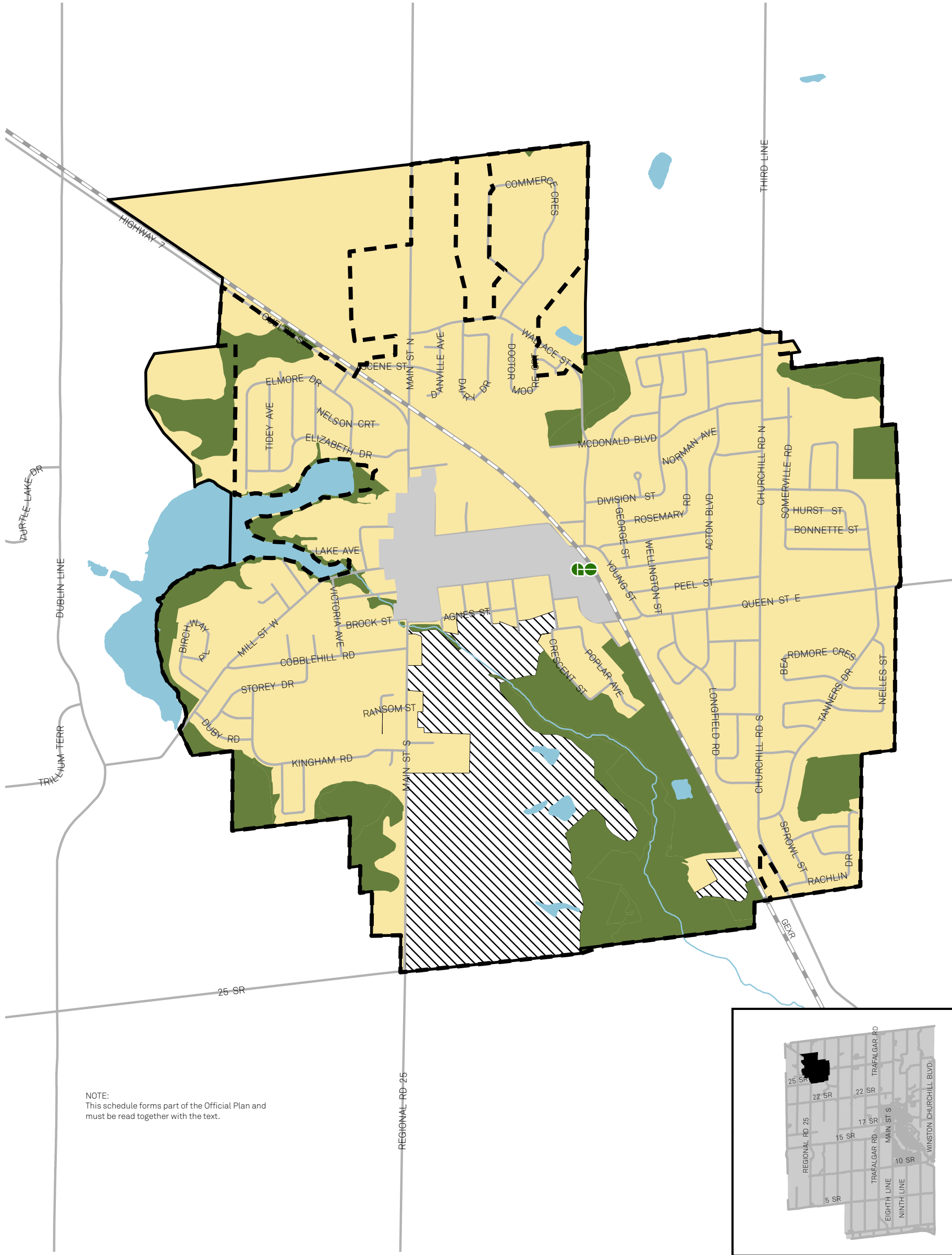


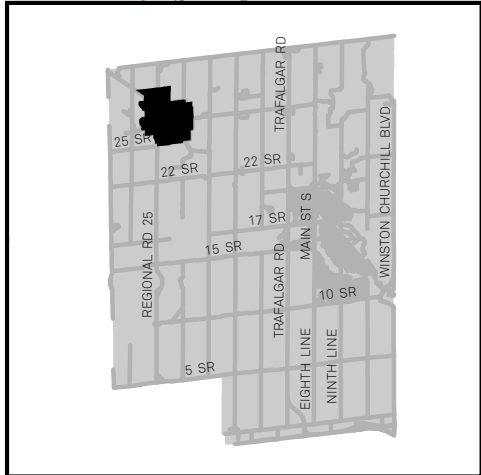
NOTE:  
This schedule forms part of the Official Plan and must be read together with the text.



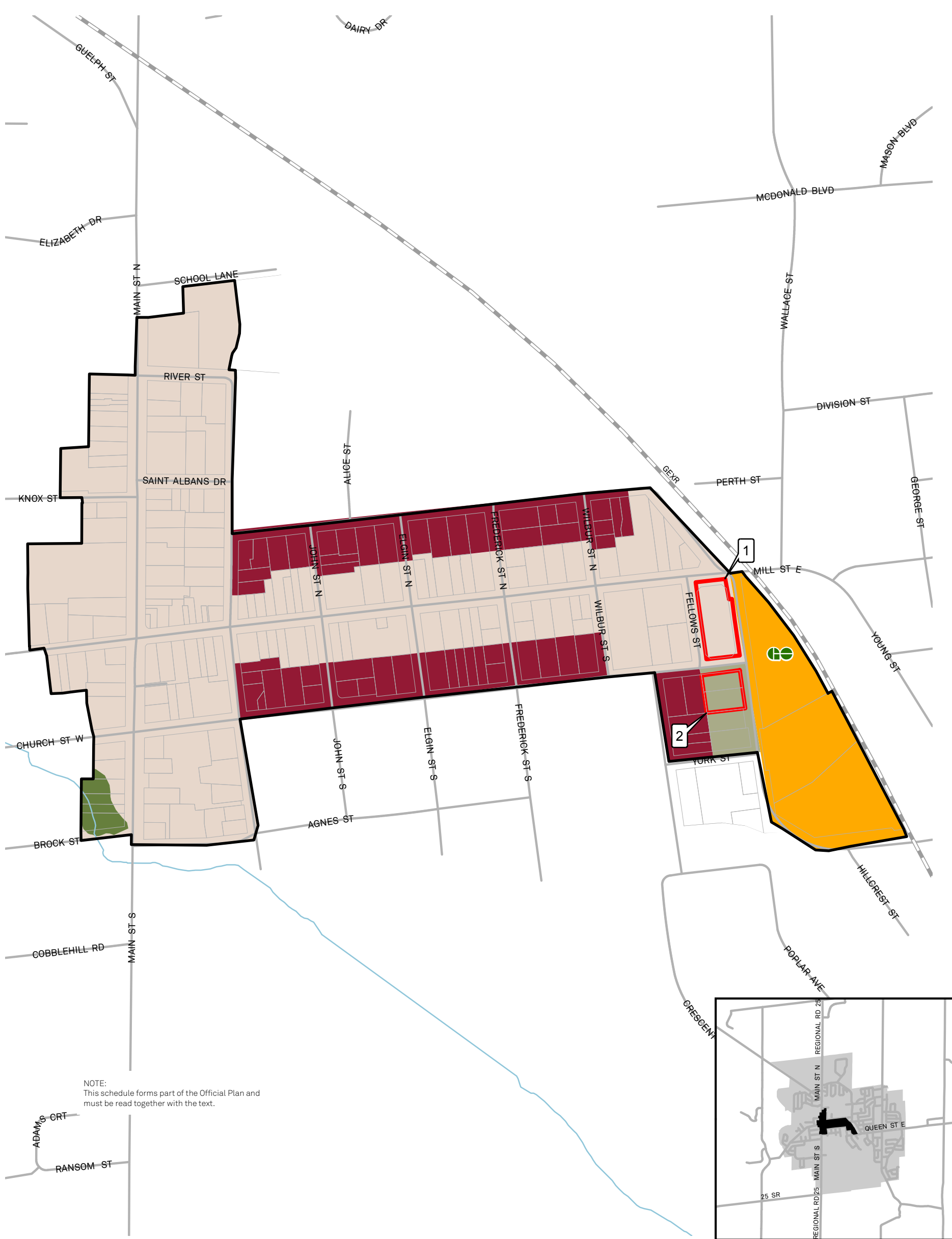
- |   |                                 |                                 |  |                       |
|---|---------------------------------|---------------------------------|--|-----------------------|
| <b>Environmental &amp; Open Space Areas</b> | <b>Urban Areas</b>              | <b>General Employment Area</b>  | <b>Downtown Area (See Schedule A7)</b> | <b>Community Park</b> |
| Greenlands                                  | Low Density Residential Area    | Major Institutional Area        | Urban Boundary                         | Neighbourhood Park    |
| Major Parks and Open Space Area             | Medium Density Residential Area | Residential Special Policy Area | Waterbody                              | School                |
| Private Open Space Area                     | High Density Residential Area   | Special Policy Area             | Watercourse                            | Major Transit Station |
|   | Corridor Commercial Area        | South Acton Special Study Area  | Railway Line                           |                       |



NOTE:  
This schedule forms part of the Official Plan and must be read together with the text.



- |   |                                |                       |                       |
|---|--------------------------------|-----------------------|-----------------------|
| <b>Environmental &amp; Open Space Areas</b> | <b>Urban Areas</b>             | <b>Urban Boundary</b> | <b>Waterbody</b>      |
| Greenlands                                  | Urban Area                     | Urban Boundary        | Waterbody             |
|   | South Acton Special Study Area | Built Boundary        | Watercourse           |
|   | Downtown Area                  |                       | Railway Line          |
|   |                                |                       | Major Transit Station |



NOTE:  
This schedule forms part of the Official Plan and must be read together with the text.



Environmental & Open Space Areas  
Greenlands

Urban Areas  
Downtown Core Sub-Area  
Downtown Residential/Office Sub-Area

Downtown Redevelopment Sub-Area  
Downtown Medium Density Residential/Commercial Sub-Area  
Special Policy Area  
Downtown Boundary

Waterbody  
Watercourse  
Railway Line  
Major Transit Station