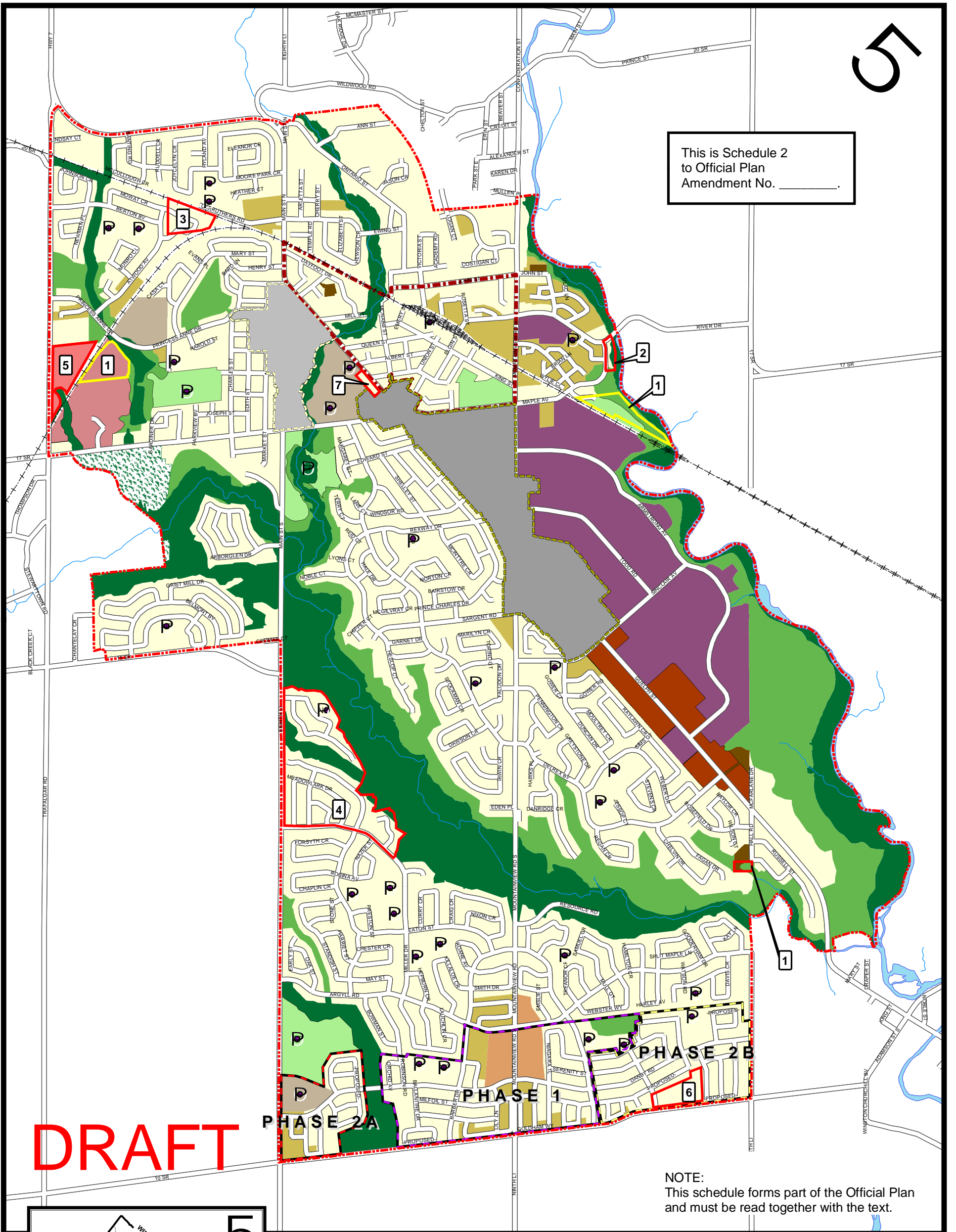


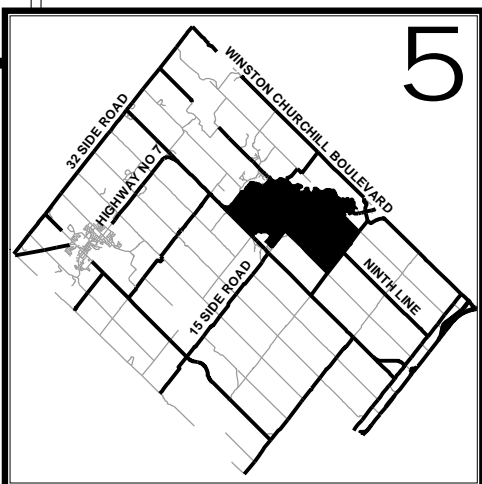


This is Schedule 2
 to Official Plan
 Amendment No. _____



DRAFT

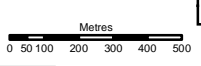
NOTE:
 This schedule forms part of the Official Plan
 and must be read together with the text.



- LIVING AREA**
- LOW DENSITY RESIDENTIAL AREA
- MEDIUM DENSITY RESIDENTIAL AREA
- HIGH DENSITY RESIDENTIAL AREA
- COMMUNITY AREA**
- Downtown Area - See Schedule A4
- Community Node Boundary - See Schedule A5
- CORRIDOR COMMERCIAL AREA
- SECONDARY NODE
- MAJOR INSTITUTIONAL AREA
- GENERAL EMPLOYMENT AREA
- CIVIC CENTRE AREA
- TRAFALGAR ROAD REDEVELOPMENT AREA

- ENVIRONMENT & OPEN SPACE**
- Green lands A
- Green lands B
- MAJOR PARKS AND OPEN SPACE
- PRIVATE OPEN SPACE
- CP COMMUNITY PARK
- NP NEIGHBOURHOOD PARK
- S SCHOOL
- RESIDENTIAL SPECIAL POLICY AREA
- Other Special Policy Area
- MT Major Transit Station

- Go Station Study Area Boundary
- DOWNTOWN AREA BOUNDARY
- COMMUNITY NODE BOUNDARY
- Urban Boundary
- PHASE 1
- PHASE 2A
- PHASE 2B



Produced by:
 TOWN OF HALTON HILLS
 Office Consolidation May 2008