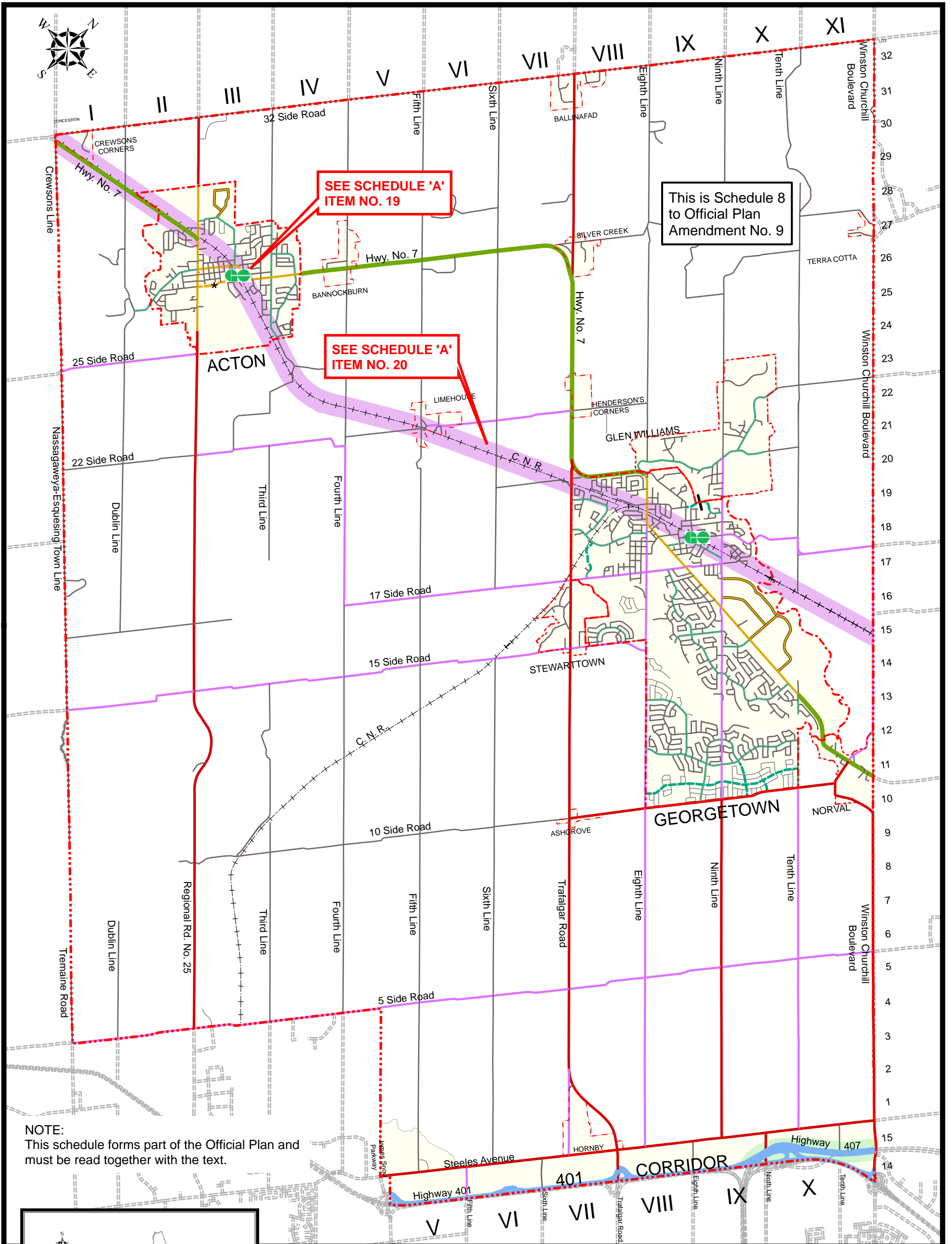


# FUNCTIONAL PLAN OF MAJOR TRANSPORTATION FACILITIES

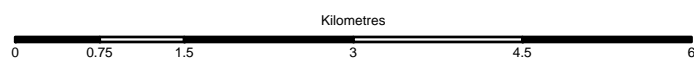


NOTE:  
This schedule forms part of the Official Plan and must be read together with the text.



- |   |  |
|---|--|
| <p><b>LEGEND</b></p> <ul style="list-style-type: none"> <li>— LOCAL ROAD</li> <li>— EMPLOYMENT ROAD</li> <li>— COLLECTOR</li> <li>— MINOR ARTERIAL</li> <li>— MAJOR ARTERIAL</li> <li>— MULTI PURPOSE ARTERIAL</li> <li>— PROVINCIAL FREEWAY</li> <li>— PROVINCIAL HIGHWAY</li> </ul> | <ul style="list-style-type: none"> <li>--- PROPOSED LOCAL ROAD</li> <li>--- PROPOSED COLLECTOR</li> <li>--- PROPOSED MULTIPURPOSE</li> <li>--- EXTERIOR ROADS</li> <li>■ URBAN AREA</li> <li>■ COMMUTER RAIL</li> <li>● MAJOR TRANSIT STATION</li> <li>■ RAPID TRANSIT CORRIDOR</li> </ul> |
|---|--|

\* Note: The exact alignment of Queen Street is conceptual and is to be determined through a Class Environmental Assessment in accordance with the policies of Section F6.4.1.10 of this Plan.



**SEE SCHEDULE 'A' ITEM NO. 19**



Produced by:  
TOWN OF HALTON HILLS  
April 2010