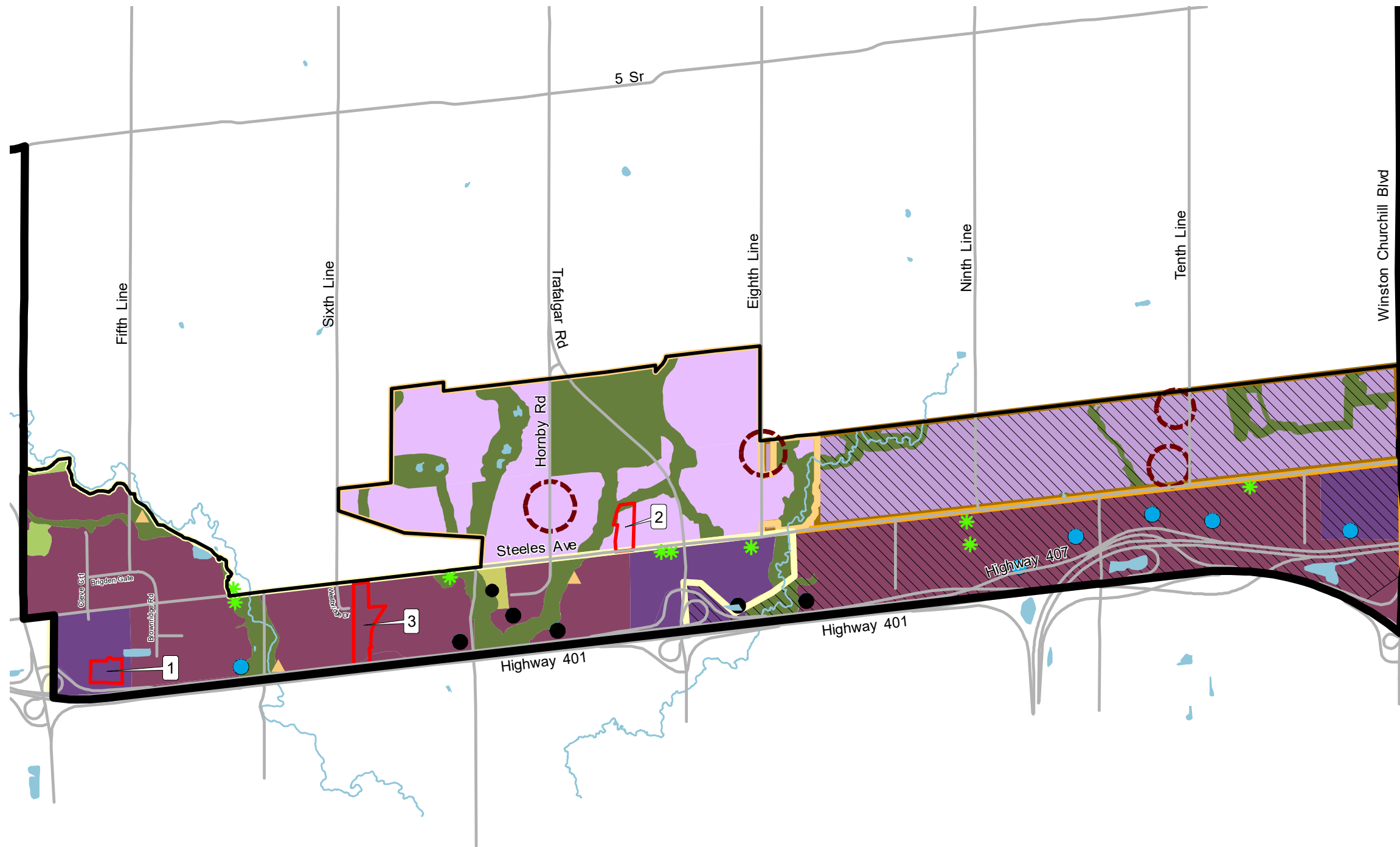


SCHEDULE A8
PREMIER GATEWAY EMPLOYMENT
AREA LAND USE PLAN



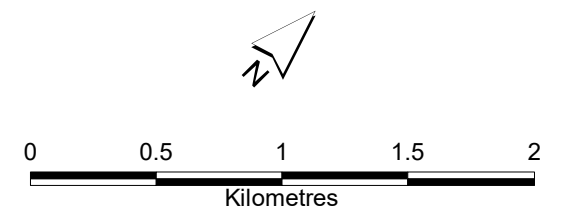
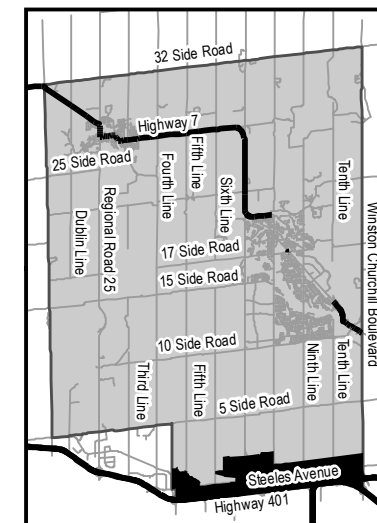
- Phase 1B Employment
- Phase 2B Employment
- Prestige Industrial
- Gateway Area
- Major Parks and Open Space
- Private Open Space
- Greenlands
- Employment Phase 1A
- Employment Phase 1B
- Employment Phase 2A (Regional Phasing 2021-2031)
- Employment Phase 2B (Regional Phasing 2021-2031)
- Existing Rural Residential Concentration
- Special Policy
- HPBATS/GTA West Corridor Protection Area
- Town of Halton Hills Boundary
- Urban Boundary
- Waterbody
- Watercourse
- Community Park
- Building with Historic Significance
- Stormwater Management Pond
- Potentially Unstable Slopes

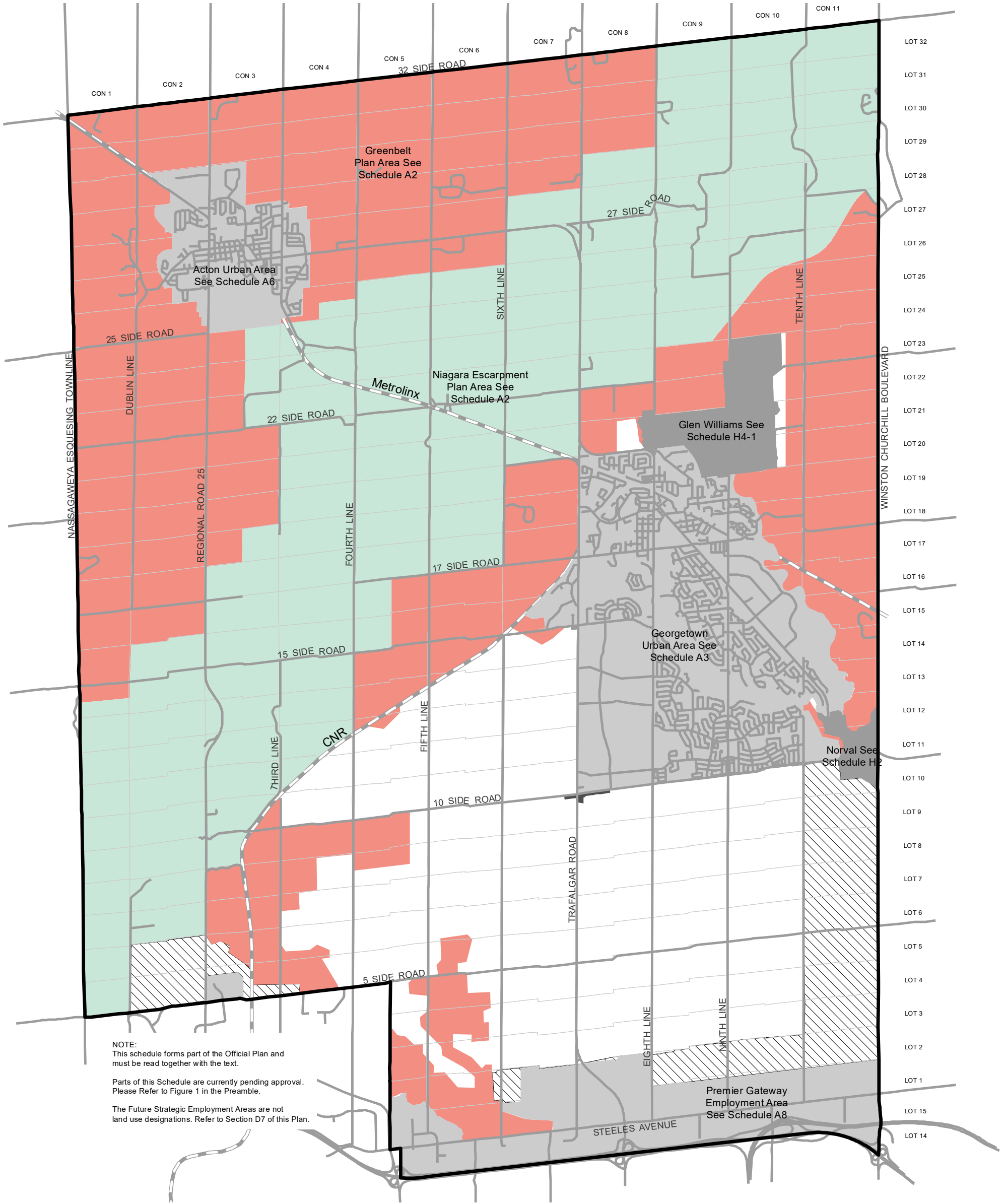
APRIL 30, 2024

CONSOLIDATION

NOTE:
 This schedule forms part of the Official Plan and must be read together with the text.

Parts of this Schedule are currently pending approval. Please Refer to Figure 1 in the Preamble.





NOTE:
This schedule forms part of the Official Plan and must be read together with the text.

Parts of this Schedule are currently pending approval. Please Refer to Figure 1 in the Preamble.

The Future Strategic Employment Areas are not land use designations. Refer to Section D7 of this Plan.

Niagara Escarpment Plan Area
Protected Countryside Area

Official Plan Schedule A17 - Legend (2)
Hamlet
Rural Cluster

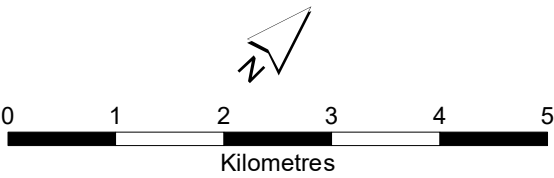
Town of Halton Hills Boundary
Future Strategic Employment Area Overlay *
Railway Line

APRIL 30, 2024

CONSOLIDATION



Town of Halton Hills Official Plan



SCHEDULE A17
FUTURE STRATEGIC
EMPLOYMENT AREAS