

**SCHEDULE A8  
PREMIER GATEWAY EMPLOYMENT  
AREA LAND USE PLAN**

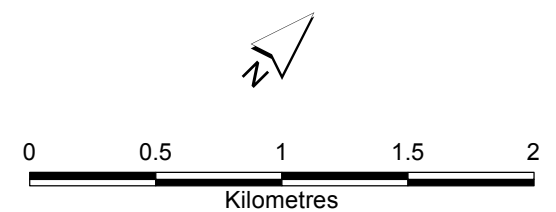
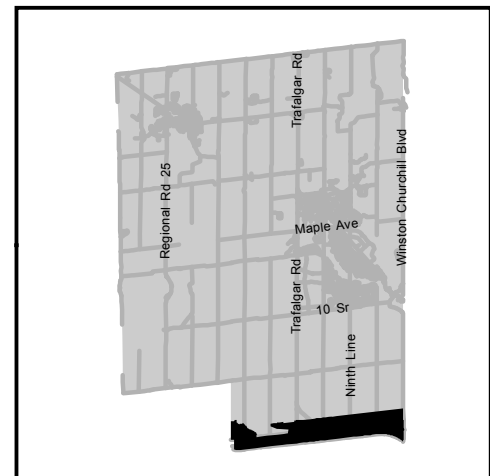


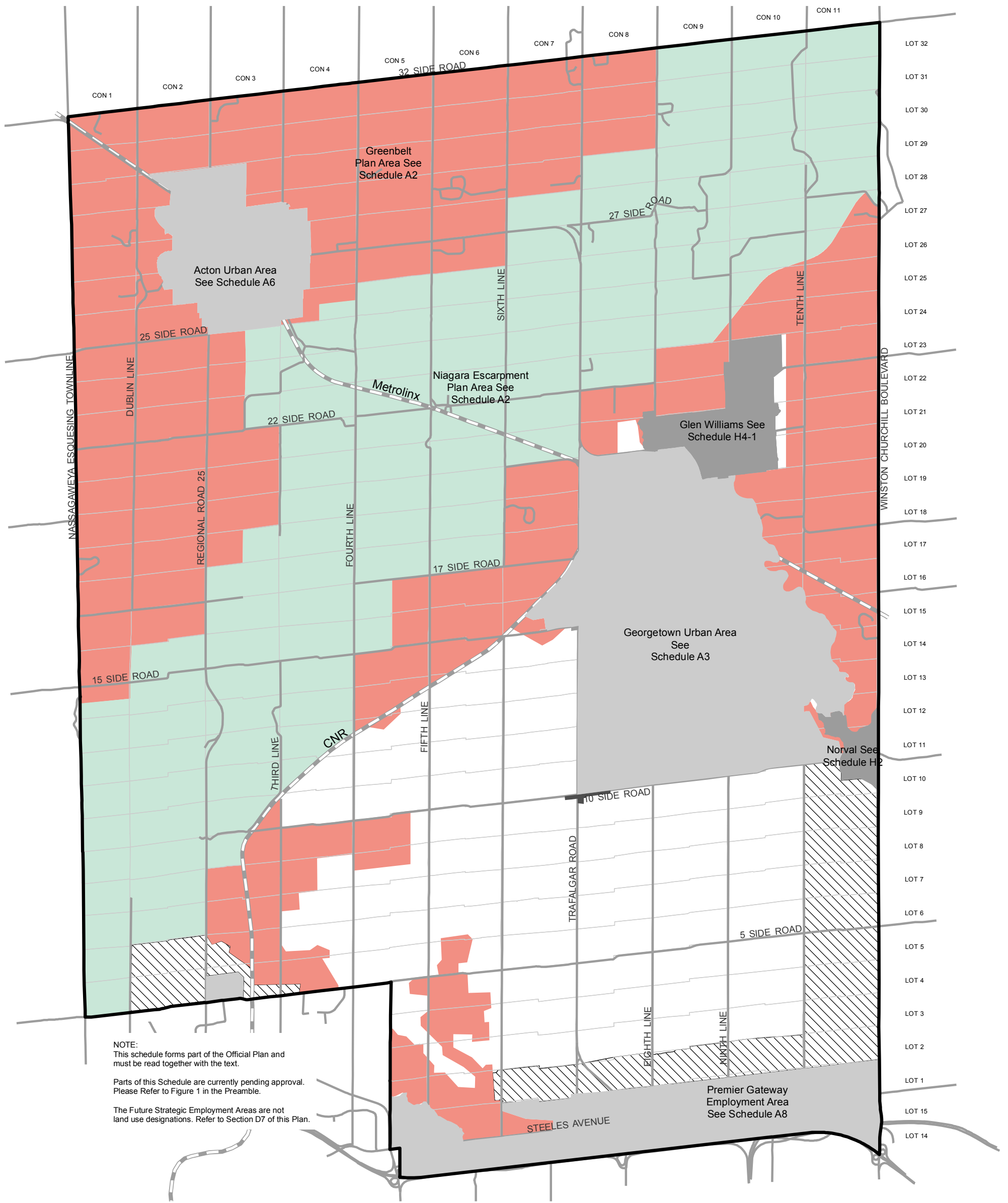
- Phase 1B Employment Area
- Phase 2B Employment Area
- Prestige Industrial Area
- Gateway Area
- Major Parks and Open Space Area
- Private Open Space Area
- Greenlands
- Employment Phase 1A
- Employment Phase 1B
- Employment Phase 2A (Regional Phasing 2021-2031)
- Employment Phase 2B (Regional Phasing 2021-2031)
- Existing Rural Residential Concentration
- Special Policy Area
- HPBATS/GTA West Corridor Protection Area
- Town of Halton Hills Boundary
- Urban Boundary
- Waterbody
- Watercourse
- Community Park
- Building with Historic Significance
- Stormwater Management Pond
- Potentially Unstable Slopes

**DECEMBER 31, 2020  
CONSOLIDATION**

**NOTE:**  
This schedule forms part of the Official Plan and must be read together with the text.

Parts of this Schedule are currently pending approval. Please Refer to Figure 1 in the Preamble.





NOTE:  
 This schedule forms part of the Official Plan and must be read together with the text.  
 Parts of this Schedule are currently pending approval. Please Refer to Figure 1 in the Preamble.  
 The Future Strategic Employment Areas are not land use designations. Refer to Section D7 of this Plan.

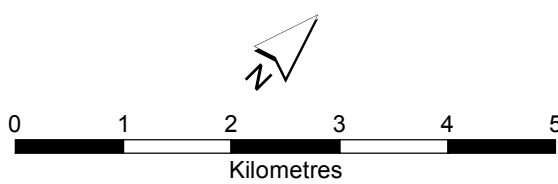
- Niagara Escarpment Plan Area
- Protected Countryside Area
- Official Plan Schedule A17 - Legend (2)
- Hamlet
- Rural Cluster
- Town of Halton Hills Boundary
- Future Strategic Employment Area Overlay \*
- Railway Line

**DECEMBER 31, 2020**

**CONSOLIDATION**



**TOWN OF HALTON HILLS OFFICIAL PLAN**



**SCHEDULE A17  
 FUTURE STRATEGIC  
 EMPLOYMENT AREAS**