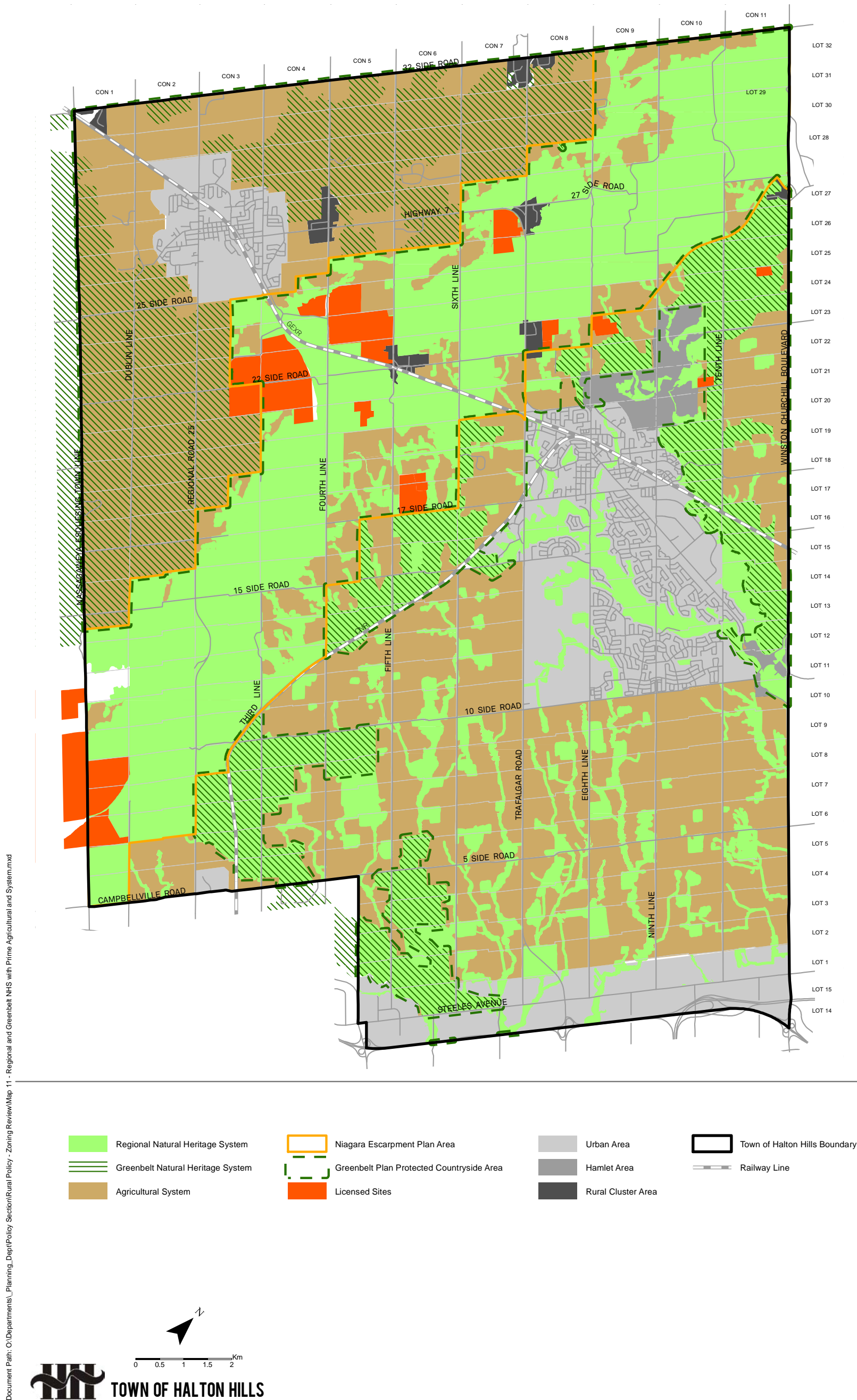


**Figure 2: Provincial Plans in the Town of Halton Hills.**



**Figure 3: Regional NHS, Greenbelt NHS, Agricultural System and Licensed Aggregate Operations in the Regional Official Plan.**

Document Path: O:\Departments\Planning\_Dept\Policy Section\Rural Policy - Zoning Review\Map 5 - Greenbelt A B Greenbelt and ENA.mxd

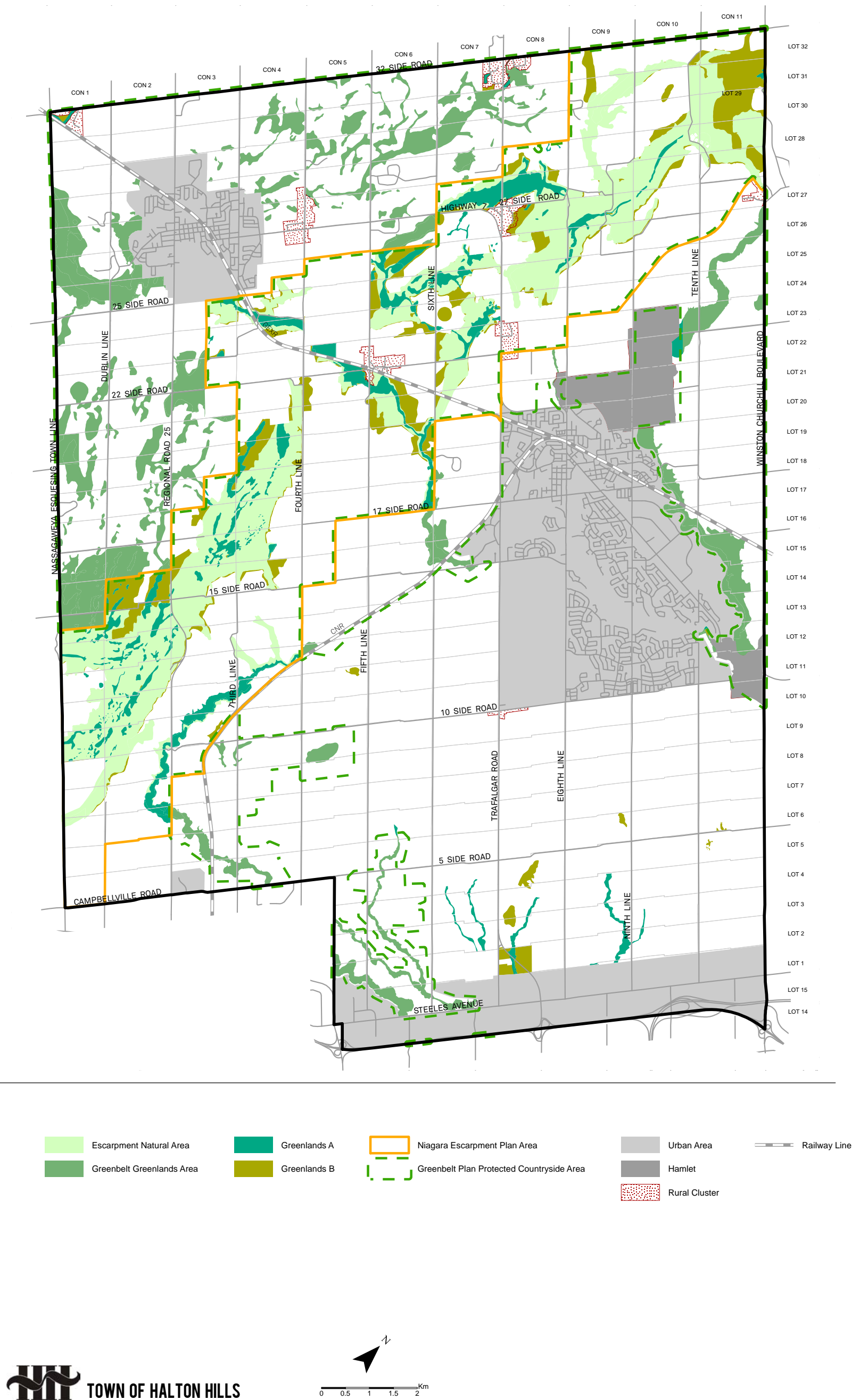


Figure 4: Greenlands A, Greenlands B, Greenbelt Greenlands and the Escarpment Natural Area designations in the Town OP.



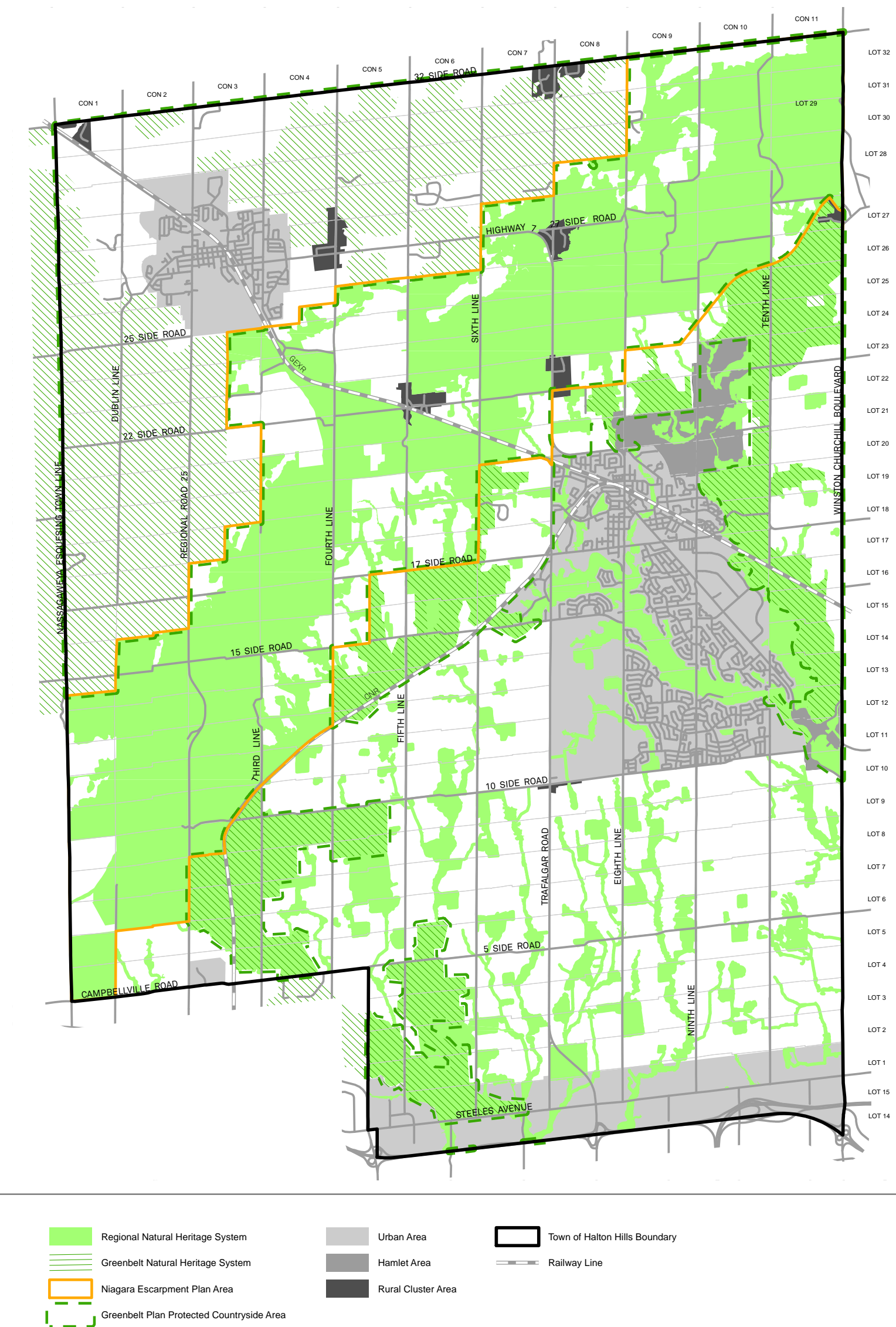


Figure 5: Regional Natural Heritage System and the Greenbelt Natural Heritage System in the ROP.

Document Path: O:\Departments\_Planning\_Dept(Policy Section)\Rural Policy - Zoning Review\Map 8 - Greenbelt A B Greenbelt and Regional and Greenbelt NHS.mxd

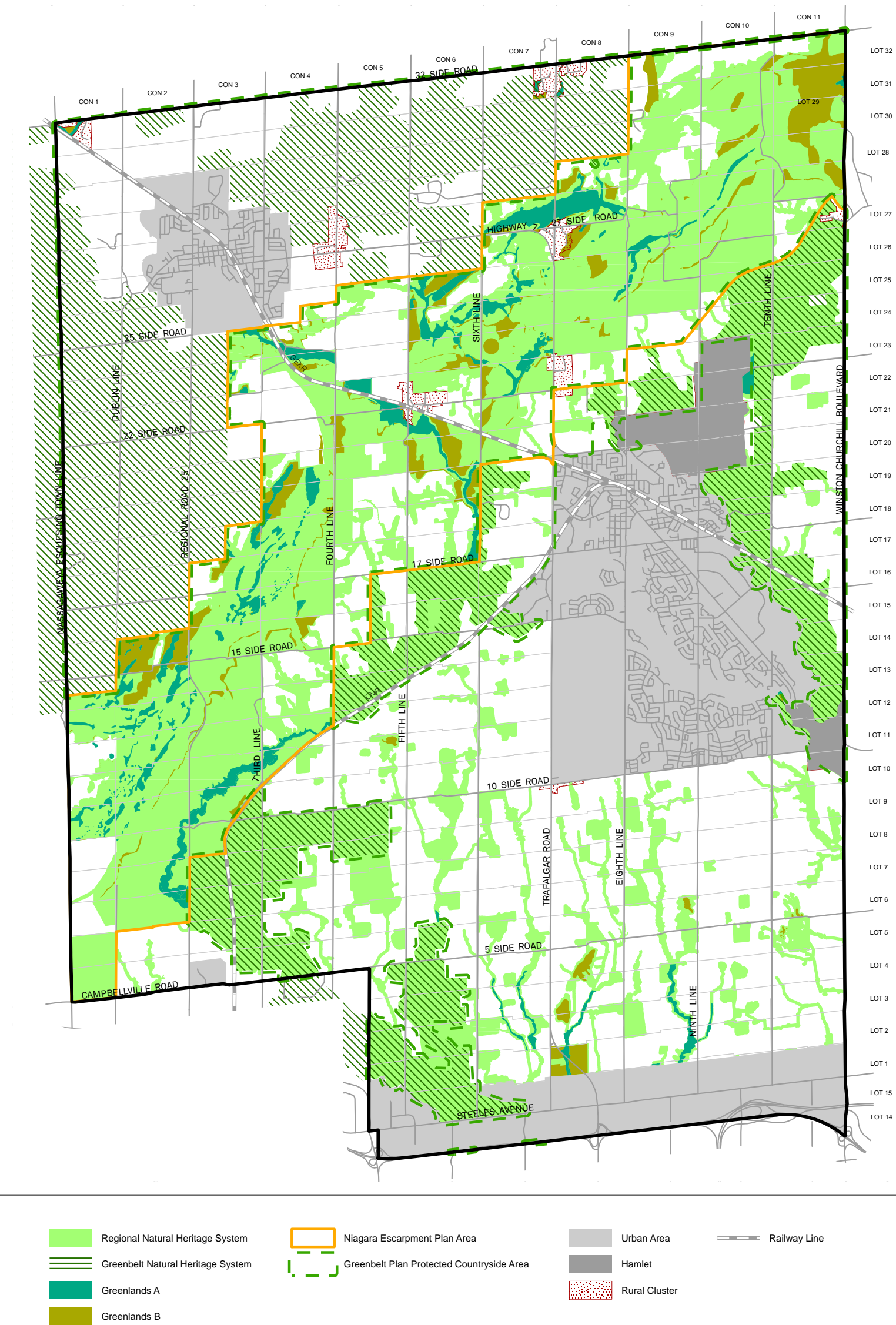


Figure 6: Comparison of Greenlands designation in the current Town OP and the environmental designations in the ROP.