

Halton Hills

Active Transportation Master Plan

Acton & Georgetown School Presentation



Overview

1. What is Planning?
2. What is Transportation Planning?
3. Role of Different Jurisdictions
4. Roadway Classification
5. Street Design...what happened?
6. Transportation Modes
7. What is Active Transportation?
8. Complete Streets
9. Complete Streets Activity
10. Town of Halton Hills ATMP



Provincial Statutes

A legislated document which must be enacted without interpretation (i.e. **Planning Act**)

Provincial Policies

A statutory document outlining actionable policies to achieve the statute and interpreted based on the condition and context (i.e. **Provincial Policy Statement**)

Official Plan

A statutory document required by the Planning Act and Provincial Policy Statement (i.e. **Town of Halton Hills Official Plan**)

Functional Master Plan

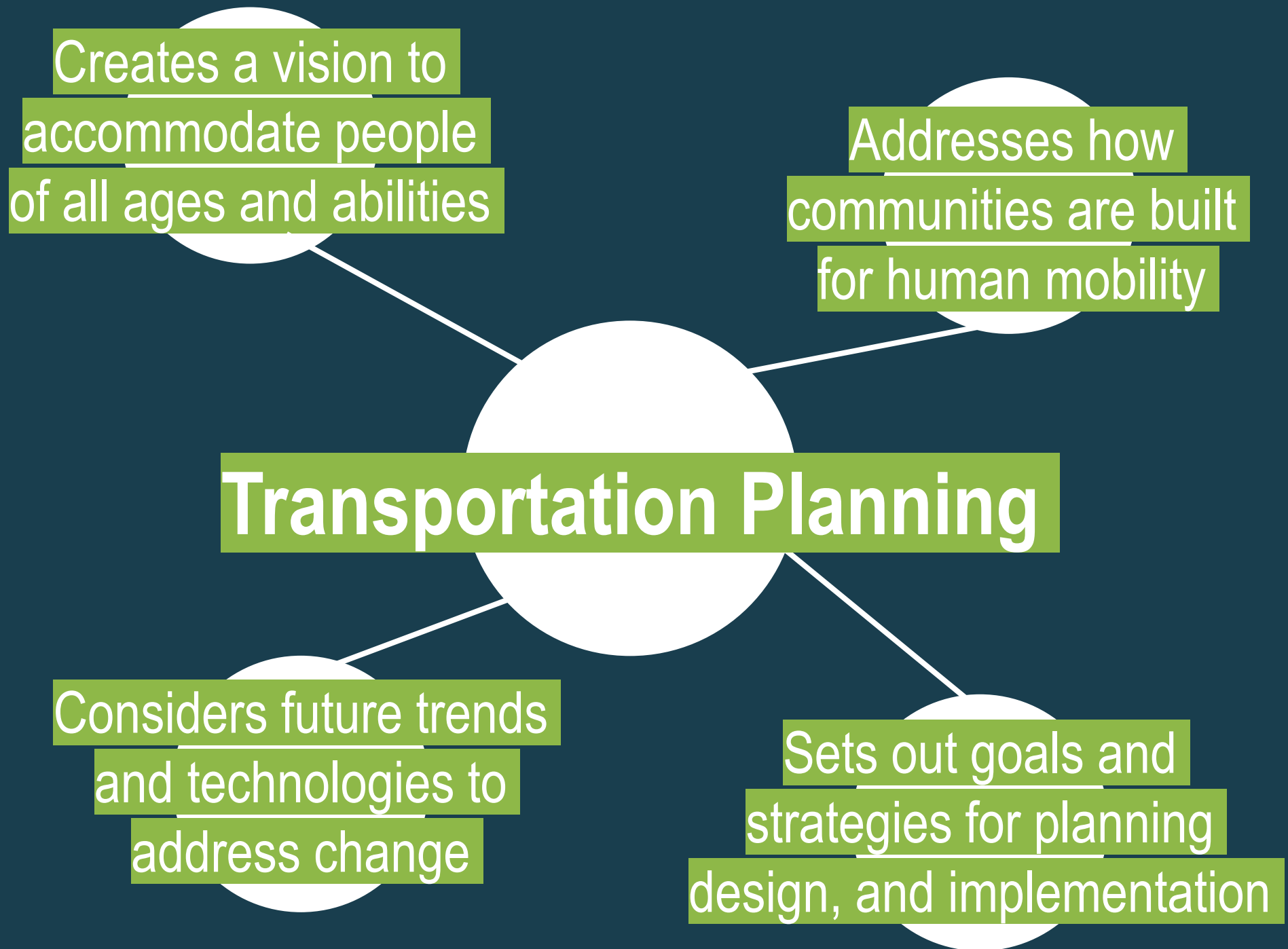
A comprehensive, long-term plan of action for key municipal issues (i.e. **Town of Halton Hills Transportation Master Plan**)

Secondary Plan

Establishes local development policies unique to the area and adapts and implements the objectives, policies, and land use designations of the Official Plan to a specific area (i.e. **Vision Georgetown Secondary Plan**)

Land Use Controls

Guides how the Official Plan policies are implemented, monitored, and enforced (i.e. **Zoning By-law**)





Federal

Set safety standards for new and imported vehicles and equipment



Provincial

Ensures compliance with provincial policies, provides strategic guidance on emerging issues and develops design guidelines and standards



Regional

Develops and implements plans and policies for roadways and lands that are owned and operated by the Region



Local

Develops and implements plans and policies for roadways and lands that are owned and operated by the Town of Halton Hills



Roadway volume and speed

Provincial Highway

Serve trips through the Region and the Town to surrounding areas

Regional Roads

Serve local trips within Halton Region

Municipal Roads

Arterial

Serve local trips within Halton Hills

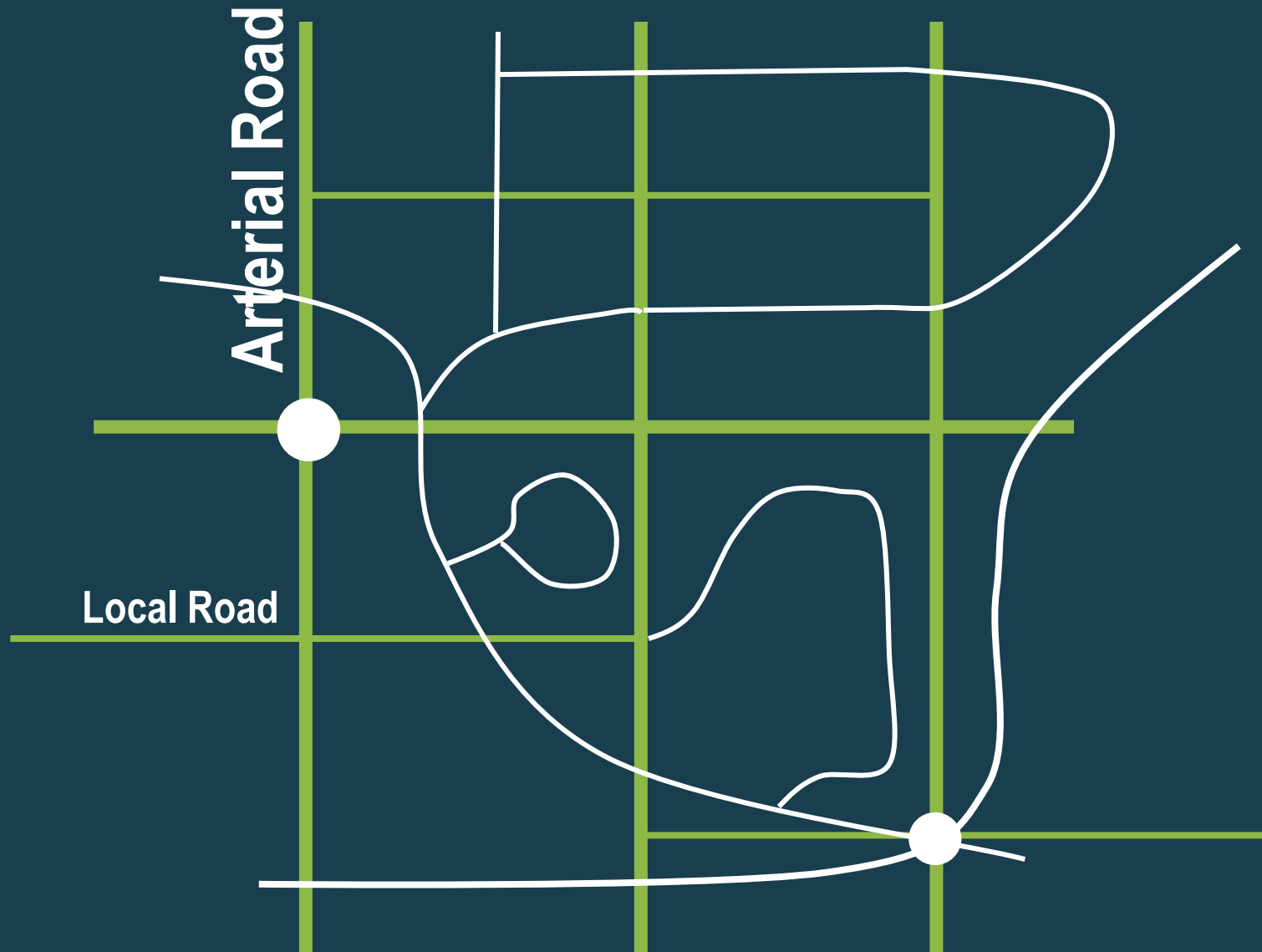
Collector

Serve as a connecting link between Regional/Arterial Roads

Local

Serve residential streets

Street design...what happened?!



traditional



the shift



Age



Trip purpose

primary

secondary



Values



Gender



Education



Location

Active Transportation is for everyone!



Arnold Schwarzenegger



LeBron James



Rachel McAdams

Convenient and safe public transit and active transportation facilities increase physical activity, and decrease the amount of cars on the road.

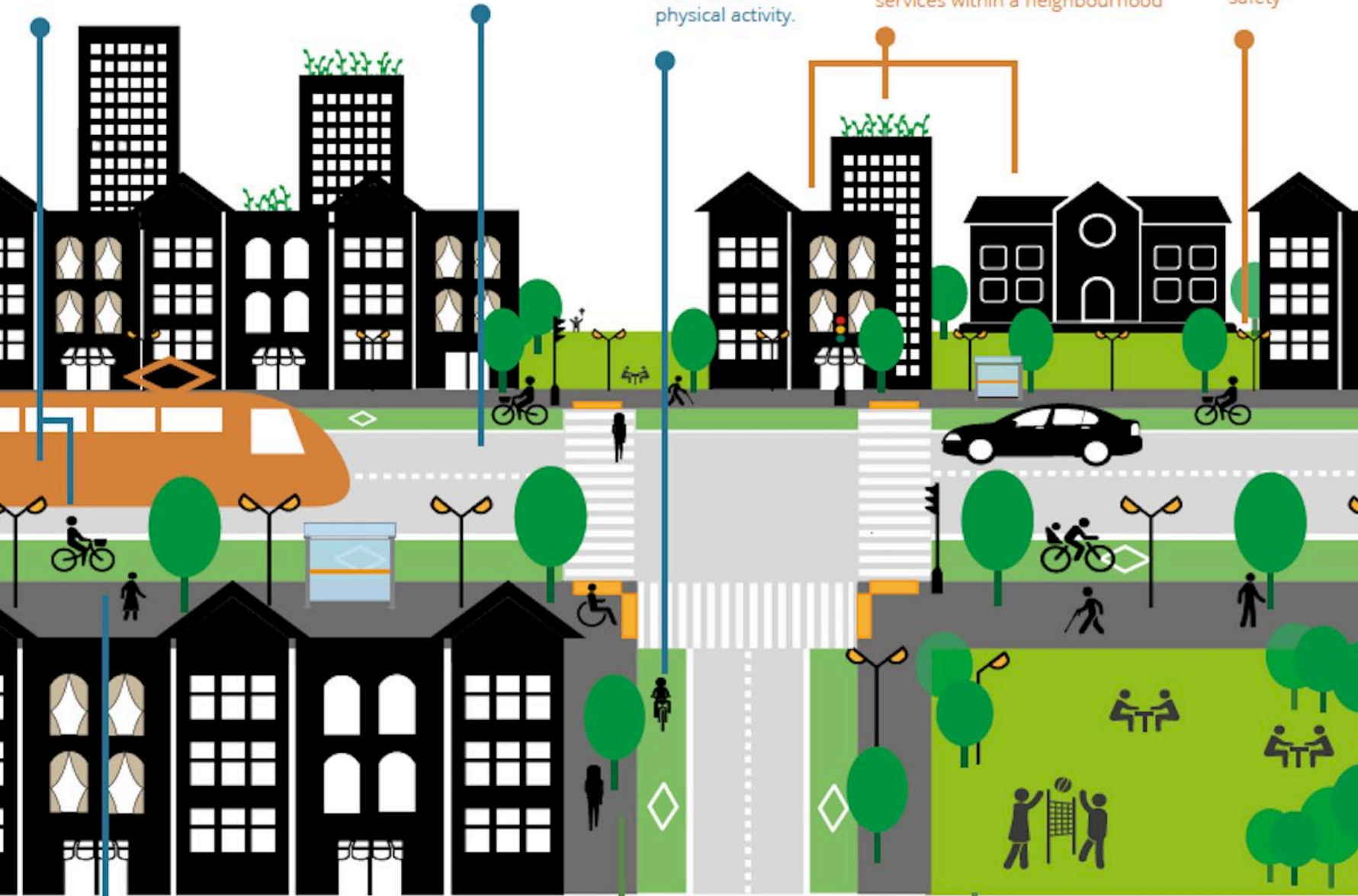
Providing attractive and safe streets can mitigate stressful commutes

Street connectivity encourages active transportation and increases physical activity.

Mixed land use creates walkable communities

Complete communities have access to jobs, education, healthy food choices, and essential services within a neighbourhood

Exterior lighting can increase perception of safety



Complete Streets are designed to be safe for all modes of transportation, ages and abilities. They support people to increase physical activity and safely choose active transportation.

Increased green spaces and vegetation help with air pollution and provide shade for pedestrians.

Attractive and accessible public spaces and parks provide opportunities for social interaction and outdoor physical activity.

Access to green spaces and natural environments supports better mental well-being.



Not enough
width

Existing
constraints

Too
expensive

Lack of policy
support

Why not?

Business
push-back

Not the right
land uses

Fear of
change

Limited
interest

Transportation & Active Transportation Plans

By-laws & Council Resolutions

Case Studies

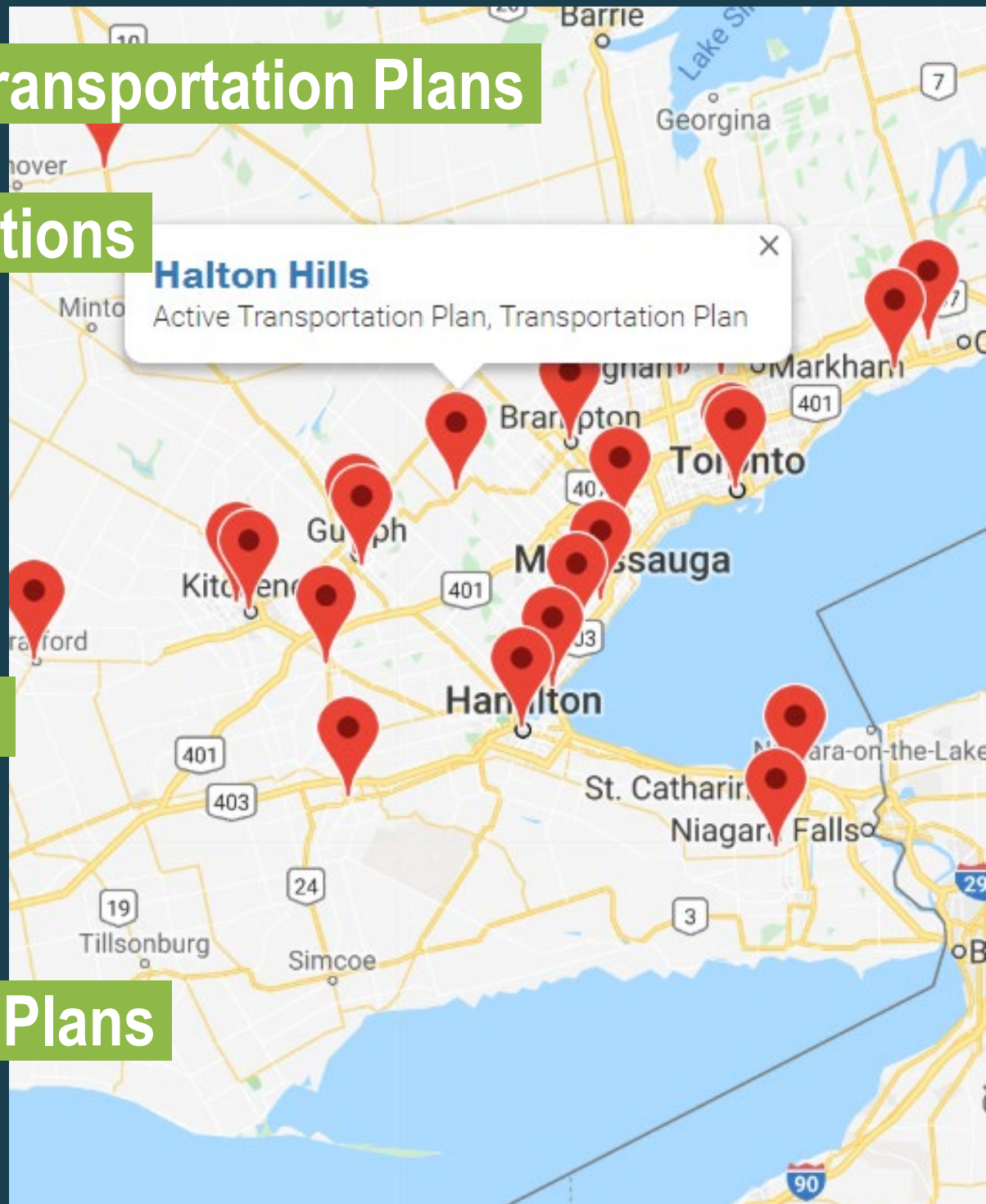
Guidelines & Standards

Health Recommendations

Land use Plans

Strategic & Sustainability Plans

Official Plans





KITCHENER, ON



HALIFAX, NS



TORONTO, ON



VANCOUVER, BC

Let's get to work!



Investigate the street (google)



Write down the conditions and considerations



Build your street and identify your solutions



Pick a street and present it to the class

The streets...



Trafalgar Road

Regional Road

Right-of-Way Width: 35m



Queen Street

Multi-Purpose Arterial Road

Right-of-Way Width: 35m

The streets...



Maple Avenue

Minor Arterial Road

Right-of-Way Width: 30m



Churchill Road N.

Collector Road

Right-of-Way Width: 26m

The streets...



Somerville Road

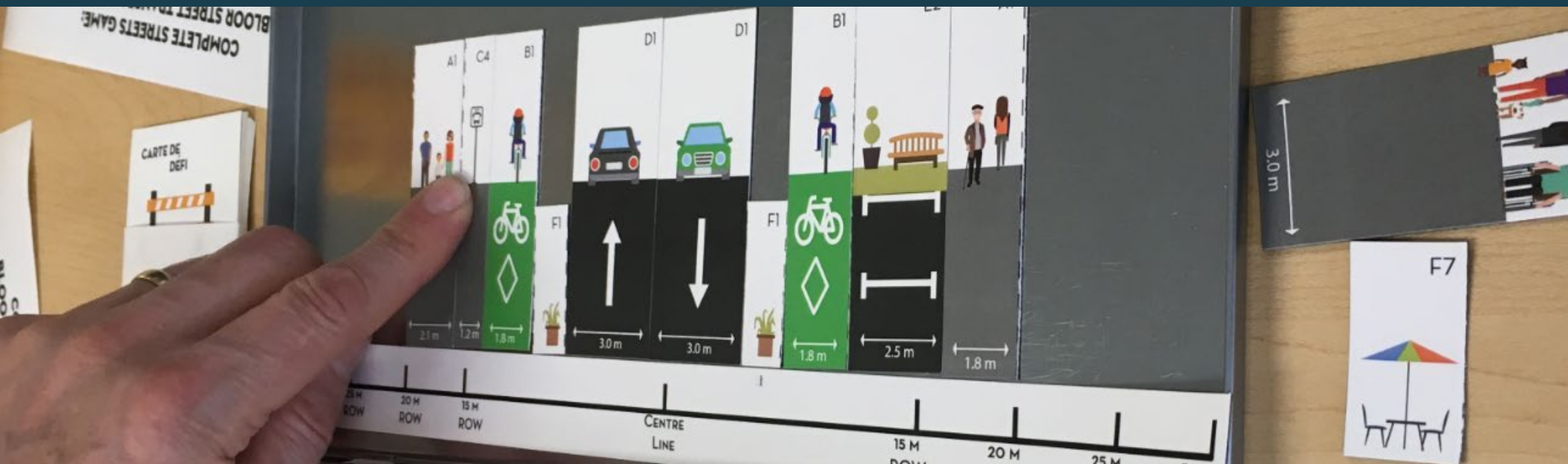
Local Road

Right-of-Way Width: 20m

Option #1 – street mix (online)



Option #2 – the game



Town of Halton Hills Active Transportation Master Plan (ATMP)

- Functional master plan in the policy structure
- Builds upon the region's active transportation master plan
- Provide additional detail beyond the Official Plan and the Transportation Master Plan
- Provides high-level design recommendations for road and trail improvements
- Identifies opportunities for education and encouragement to create behavior change
- Provides policy recommendations to align existing and future policies
- Provides a high-level implementation strategy for day to day coordination

Thank you. Questions?

