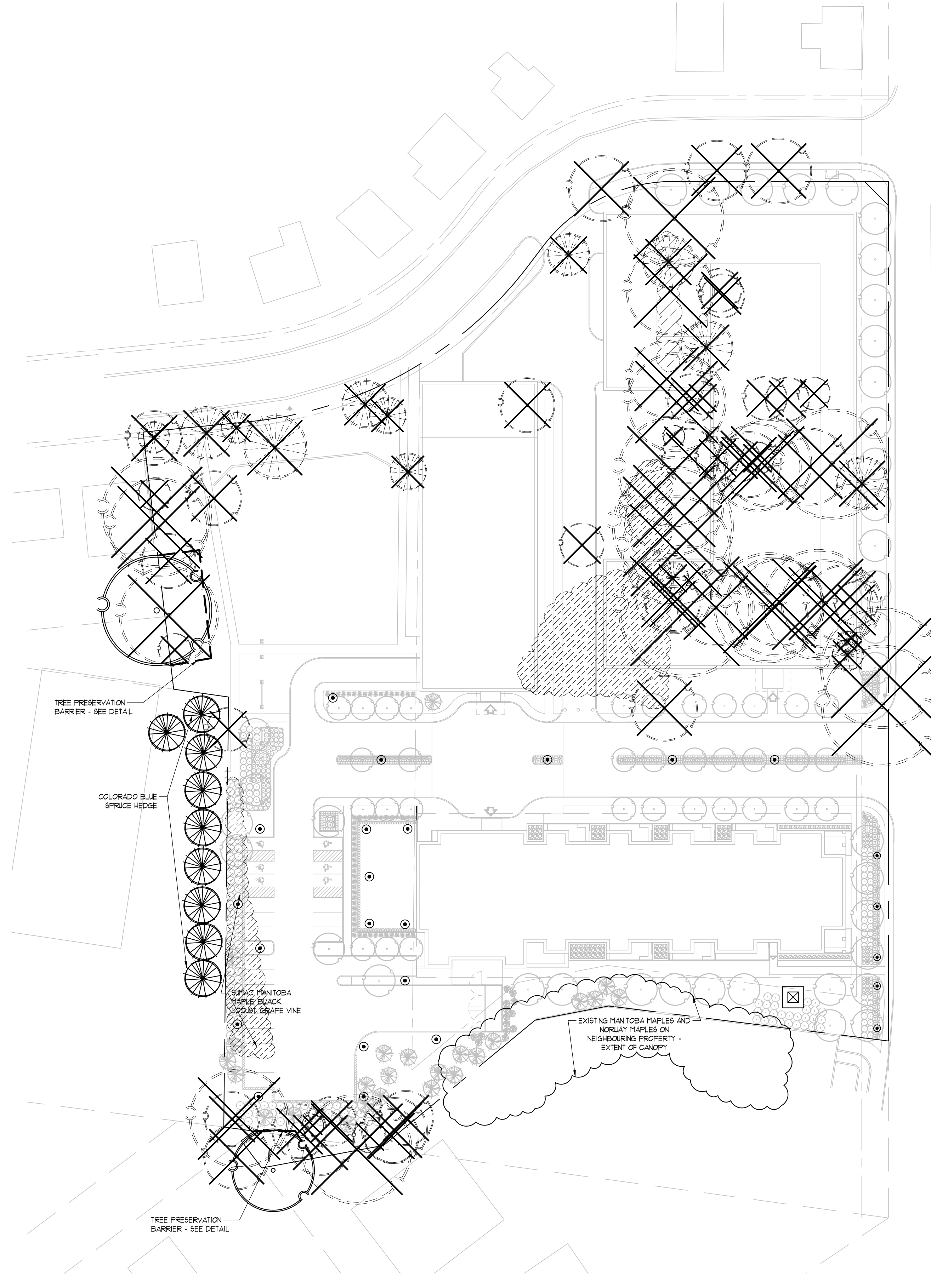
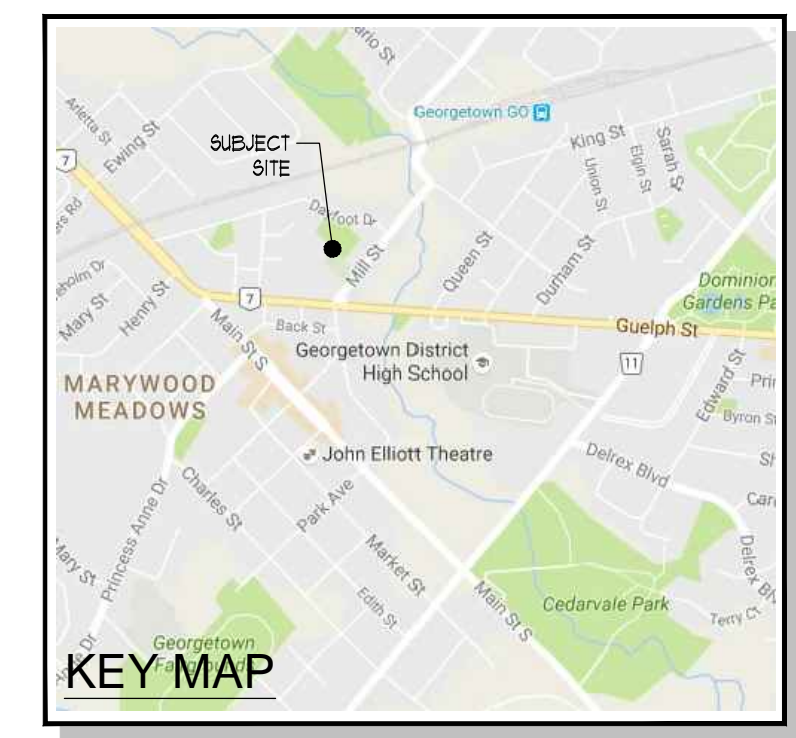


TREE PRESERVATION / REMOVAL RECOMMENDATIONS

TAG#	TREE SPECIES	SIZE		BIOLOGICAL HEALTH			RECOMMENDATION	
		DBH (cm)	CANOPY RADIUS (m)	CROWN COND.	STRUCTURAL CONDITION	DECLINE SYMPTOM	PROPOSED ACTION	RATIONALE
206	<i>Juglans nigra</i>	30	5	5			08	R Construction
207	<i>Rubinia pseudoacacia</i>	27	6	4			08	R Construction
208	<i>Rubinia pseudoacacia</i>	21, 25	5	5	M52			R Construction
209	<i>Juglans nigra</i>	25	3	5		S2, 08		R Construction
210	<i>Juglans nigra</i>	39	10	5				R Construction
211	<i>Rubinia pseudoacacia</i>	36	45	5			08	R Construction
212	<i>Juglans nigra</i>	33	6	5				R Construction
213	<i>Juglans nigra</i>	16	2	5			08	R Construction
214	<i>Juglans nigra</i>	34	5	5				R Construction
215	<i>Acer negundo</i>	55, 45	9	3	M52		L, 08	R Construction
216	<i>Acer negundo</i>	40	6	4			08, R1	R Construction
217	<i>Juglans nigra</i>	33	5	5			08, C7	R Construction
218	<i>Acer negundo</i>	13, 12, 12	4	5	M54		08	R Construction
219	<i>Ulmus americana</i>	15	3	5			08, S1	R Construction
220	<i>Acer negundo</i>	28, 20, 20	9	4	M53		08	R Construction
221	<i>Acer platanoides</i>	15	5	4				R Construction
222	<i>Acer negundo</i>	35, 30, 20, 19	9	5	M54		08	R Construction
223	<i>Acer negundo</i>	23, 15, 14	10	4	M53		08	R Construction
224	<i>Acer negundo</i>	25	3	3			S1, 08	R Construction
225	<i>Pinus sylvestris</i>	38	3	4				R Construction
226	<i>Acer negundo</i>	12, 10, 9, 8, 7	5	4	M56		08	R Construction
227	<i>Acer negundo</i>	20, 20, 20, 18, 15	5	4	M55		08, S1	R Construction
228	<i>Pinus sylvestris</i>	45	5	4				R Construction
229	<i>Pinus sylvestris</i>	22	3	3				R Construction
230	<i>Pinus sylvestris</i>	58	6	5				R Construction
231	<i>Pinus sylvestris</i>	48	45	5				R Construction
232	<i>Thuja occidentalis</i>	30, 30, 20	35	4	M53			R Construction
233	<i>Thuja occidentalis</i>	40, 33	35	4	M52			R Construction
234	<i>Juglans nigra</i>	35	5	5				R Construction
235	<i>Salix babylonica</i>	10	4	5			S4	R Construction
236	<i>Morus alba</i>	20, 20, 15, 15, 10, 10	6	5	M56			R Construction
237	<i>Acer negundo</i>	35	7	5			08, L	R Construction
238	<i>Thuja occidentalis</i>	10/16 7830	5	3/4	HEDGE ROW			R Construction
239	<i>Taxus spp.</i>	30, 20, 15, 5	4	M54		S1		R Construction
240	<i>Juglans nigra</i>	48	9	5				R Construction
241	<i>Acer platanoides</i>	46	6	5				R Construction
242	<i>Picea pungens var.</i>	60	4	4			R1	R Construction
243	<i>Acer platanoides</i>	40	55	4			R1	R Construction
244	<i>Acer platanoides</i>	38	6	5				R Construction
245	<i>Acer negundo</i>	14	4	4			L	R Construction
246	<i>Acer negundo</i>	24	4	4			L	R Construction
247	<i>Acer negundo</i>	40	8	4			R1	R Construction
248	<i>Picea glauca</i>	38	5	4				R Construction
249	<i>Acer negundo</i>	20	45	4			08	R Construction
250	<i>Juglans nigra</i>	12	3	5				R Construction
251	<i>Acer platanoides</i>	10	4	5			L	R Construction
252	<i>Acer negundo</i>	75	4	1				R Construction
253	<i>Ulmus americana</i>	14, 10	3	4	M52			R Construction
254	<i>Ulmus americana</i>	30, 30, 25	9	5	M53			R Construction
255	<i>Syringa reticulata litor.</i>	10	2	5			08	R Construction
256	<i>Acer negundo</i>	29	5	5			L	R Construction
257	<i>Acer negundo</i>	10, 10, 10	4	4	M53		08, L	R Construction
258	<i>Ulmus americana</i>	10	4	4			08	R Construction
259	<i>Acer negundo</i>	15, 15, 10	6	4	M53		S4, C7	R Construction
260	<i>Rhamnus cathartica</i>	10	3	4				R Construction
261	<i>Acer platanoides</i>	35	7	5				R Construction
262	<i>no tag</i>							R Construction
263	<i>Acer negundo</i>	15, 10, 6	10	4	M53		L, 08	R Construction
264	<i>Picea glauca</i>	40	5	4			R1	R Construction
265	<i>Acer negundo</i>	35	8	3	S1, S2, L			R Construction
266	<i>Acer negundo</i>	17, 15	8	4	M52		S2, 08	R Construction
267	<i>Juglans nigra</i>	45	10	5			08, S4	R Construction
268	<i>Acer platanoides</i>	33, 29, 20, 18, 10	9	5	M55		S1	R Construction
269	<i>Acer negundo</i>	30	12	4			S1, S2, 08, L	R Construction
270	<i>Acer platanoides</i>	50	10	5				R Construction
271	<i>Picea glauca</i>	40	3	3				R Construction
272	<i>Acer negundo</i>	30	7	3			08, L, C7	R Construction
273	<i>Acer platanoides</i>	30	5	3			C7, L	R Construction
274	<i>Acer platanoides</i>	50	12	5				R Construction
275	<i>Acer negundo</i>	60	7	3			S2, S4	R Construction
276	<i>Acer platanoides</i>	50, 40	10	5	M52			R Construction
277	<i>Acer platanoides</i>	40, 10	9	5	M52			R Construction
278	<i>Acer platanoides</i>	15	8	5				R Construction
279	<i>Acer platanoides</i>	55, 40	10	5	M52		R1	R Construction
280	<i>Acer platanoides</i>	15, 10	8	5	M52		L	R Construction
281	<i>Acer platanoides</i>	20	7	4				R Construction
282	<i>Acer platanoides</i>	10	4	5				R Construction
283	<i>Acer platanoides</i>	74	11	3			S1	R Construction
284	<i>Acer platanoides</i>	74	11	5			S1	R Construction
285	<i>Picea glauca</i>	15	2	5				R Construction
286	<i>Picea glauca</i>	20	3	5				R Construction
vegetation unit 1		10/16 2-30	varies	5	primary tree species:			R Construction
vegetation unit 1		10/16 2-30	varies	5	primary understory species:			R Construction
Trees not tagged (on neighbouring properties)								
1	<i>Acer negundo</i>	85	8	4			08, L	P
2	<i>Ulmus americana</i>	100	10	5				P



TREE PRESERVATION PLAN
SCALE = 1:500



LEGEND

- 5 - EXISTING DECIDUOUS TREES TO REMAIN (Symbol: circle with 5)
- 8 - EXISTING DECIDUOUS TREES TO BE REMOVED (Symbol: circle with 8 and cross-hatch)
- 6 - EXISTING CONIFEROUS TREES TO REMAIN (Symbol: circle with 6 and radial lines)
- 9 - EXISTING CONIFEROUS TREES TO BE REMOVED (Symbol: circle with 9 and cross-hatch)
- EXISTING PLANTINGS TO REMAIN (Symbol: cloud shape)
- EXISTING PLANTINGS TO BE REMOVED (Symbol: cloud shape with cross-hatch)
- TREE PRESERVATION BARRIER (Symbol: dashed line)

PVC SNOW FENCE

NOTES:

- EXISTING TREES ARE TO BE PROTECTED FROM CONSTRUCTION WITH THE INSTALLATION OF A 1000MM (4'-0") HIGH SNOW FENCE, AT NOT LESS THAN 1000MM (3'-4") FROM THE EXISTING DRIPLINE. HELD IN PLACE WITH 1000MM (16'-0") T-BARS.
- THE BARRIER IS TO BE INSTALLED PRIOR TO ANY CONSTRUCTION AND MUST REMAIN IN PLACE UNTIL ALL CONSTRUCTION IS COMPLETED.
- ALL SUPPORTS AND BRACING SHOULD BE INSIDE THE TREE PROTECTION ZONE. ALL SUCH SUPPORTS SHOULD MINIMIZE DAMAGING ROOTS IN THE TREE PROTECTION ZONE.
- NO CONSTRUCTION ACTIVITY, GRADE CHANGES, SURFACE TREATMENT, OR EXCAVATION OF ANY KIND IS PERMITTED WITHIN THE TREE PROTECTION ZONE.
- NO MOVEMENT OF EQUIPMENT, STORAGE OF BUILDING SUPPLIES, CLEANING OR EQUIPMENT, OR DUMPING OF SOLVENTS, GASOLINE, ETC. MAY OCCUR WITHIN THIS FENCE LINE.
- WHERE HIGH QUALITY SPECIMENS OCCUR ADJACENT TO AREAS SUBJECTED TO INTENSIVE CONSTRUCTION ACTIVITY, WOODEN CRIBBING SHOULD BE INSTALLED TO PROTECT TRUNKS FROM DAMAGE IN THE EVENT THAT HEAVY EQUIPMENT BREAKS DOWN THE SNOW FENCING. FENCE TO BE INSPECTED BY ENVIRONMENTAL CONSULTANT ON A REGULAR BASIS AND BE MAINTAINED BY THE SUBDIVIDER / BUILDER.

TEMP. TREE PROTECTION BARRIER - N.T.S.

GREG COOK & ASSOCIATES
140 SOUTH DEARBORN
CHICAGO, IL 60603



ALL DRAWINGS REMAIN THE PROPERTY OF THE LANDSCAPE ARCHITECT AND SHALL NOT BE REPRODUCED OR REUSED WITHOUT THE LANDSCAPE ARCHITECTS WRITTEN PERMISSION.
THIS DRAWING SHALL NOT BE USED FOR CONSTRUCTION OR TENDER PURPOSES UNLESS SIGNED AND DATED BY RONALD H. KOUDYS, O.A.L.A. C.S.L.A., LANDSCAPE ARCHITECT, LONDON, ONTARIO (519) 667-3322.

Ronald H. Koudys, O.A.L.A. C.S.L.A. DATE _____

Greg Cook & Associates expressly disclaims any responsibility arising from any unauthorized use of these plans, drawings and notes. Any authorization must be in writing.

This drawing copy may have been reproduced at a size different than originally drawn. The Owner and Architect assume no responsibility for use of incorrect scale. Drawings are not to be scaled.

Not published - All rights reserved.

No.	Date	Issue
1	11/11/16	ISSUED FOR SITE PLAN APPLICATION

Project Number	RKLA #16-232
Drawn	RKLA Inc.
Checked	R.H.K.
Proj. Arch./Eng.	-



42 MILL STREET
42 Mill Street, Georgetown
Horton Hills, ON

TREE PRESERVATION PLAN

Sheet Name
Drawing No. T1-1