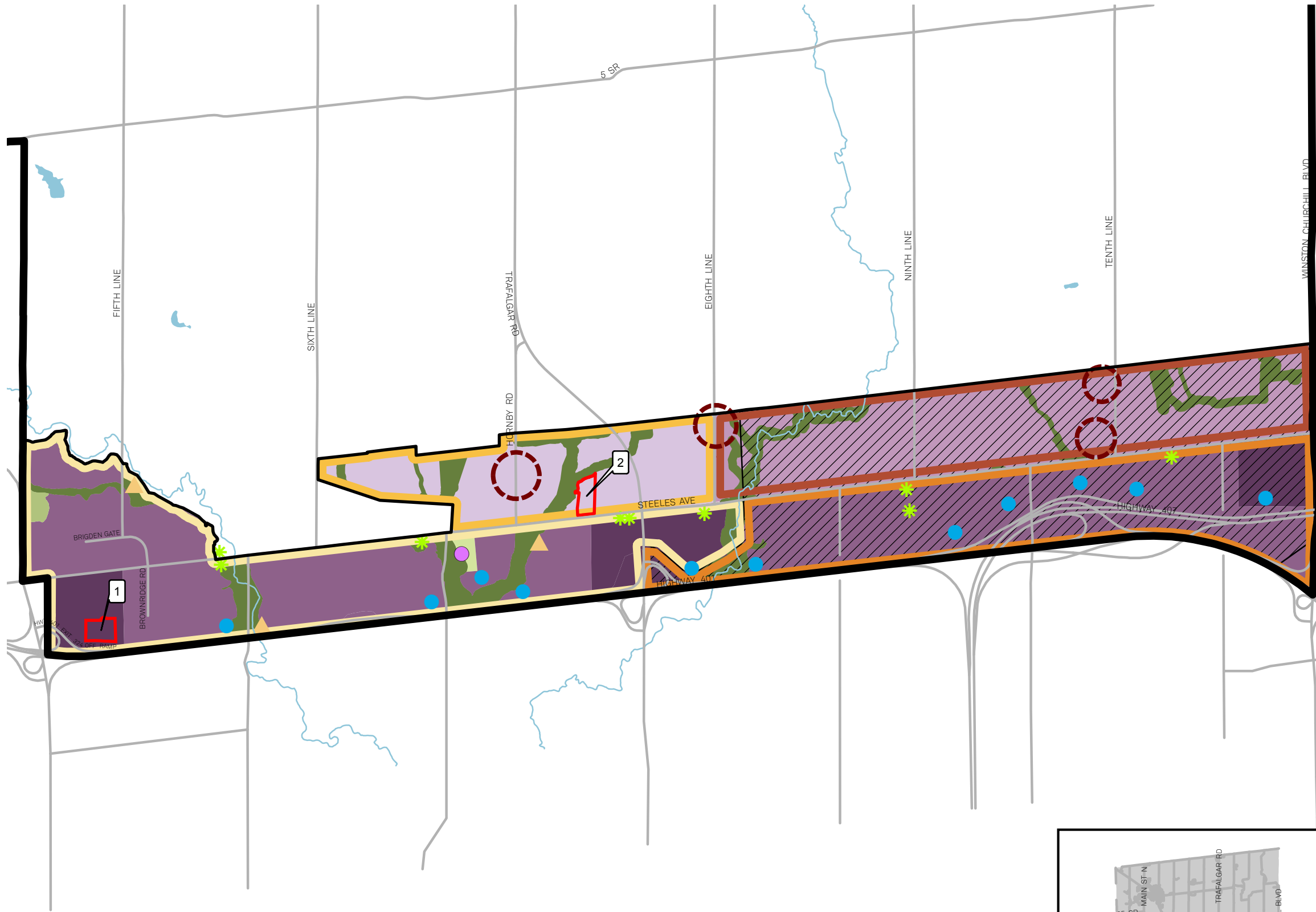


**SCHEDULE A8
PREMIER GATEWAY EMPLOYMENT
AREA LAND USE PLAN**



- Phase 1B Employment Area
- Phase 2B Employment Area
- Prestige Industrial Area
- Gateway Area
- Major Parks and Open Space Area
- Private Open Space Area
- Greenlands
- Employment Phase 1A
- Employment Phase 1B
- Employment Phase 2A (Regional Phasing 2021-2031)
- Employment Phase 2B (Regional Phasing 2021-2031)
- Existing Rural Residential Concentration
- Special Policy Area
- HPBATS/GTA West Corridor Protection Area
- Town of Halton Hills Boundary
- Urban Boundary
- Waterbody
- Watercourse
- Community Park
- Building with Historic Significance
- Stormwater Management Pond
- Potentially Unstable Slope

NOTE:
This schedule forms part of the Official Plan and must be read together with the text.

Parts of this Schedule are currently pending approval. Please Refer to Figure 1 in the Preamble.

