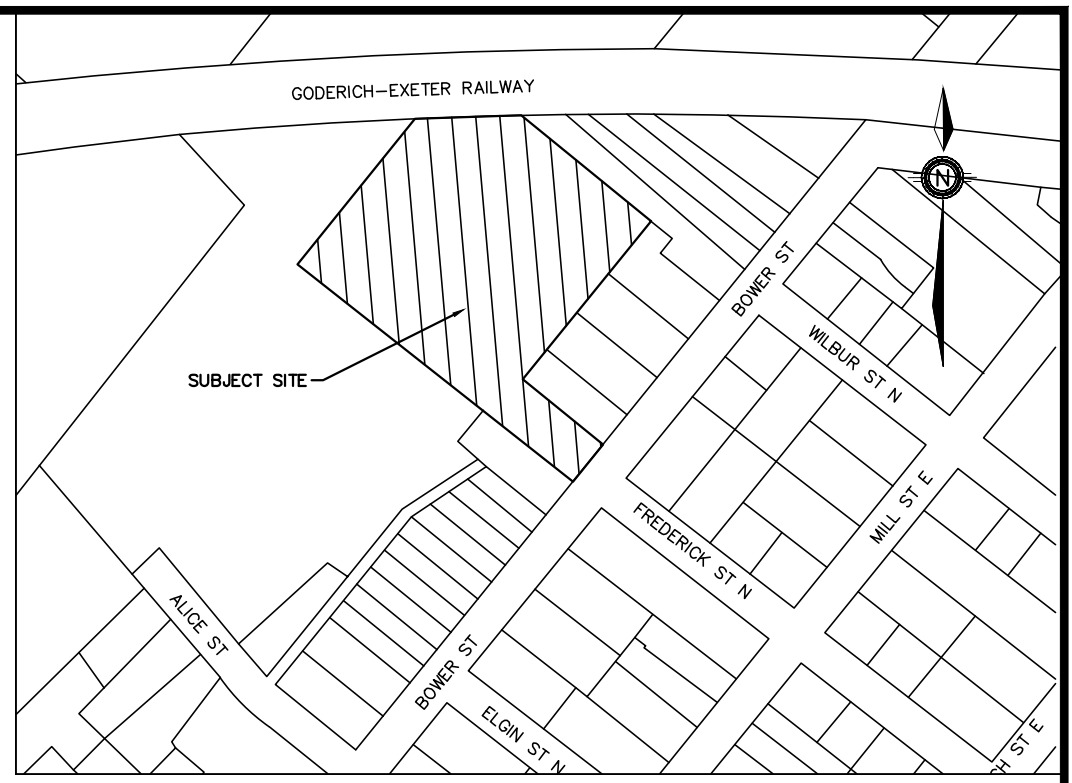
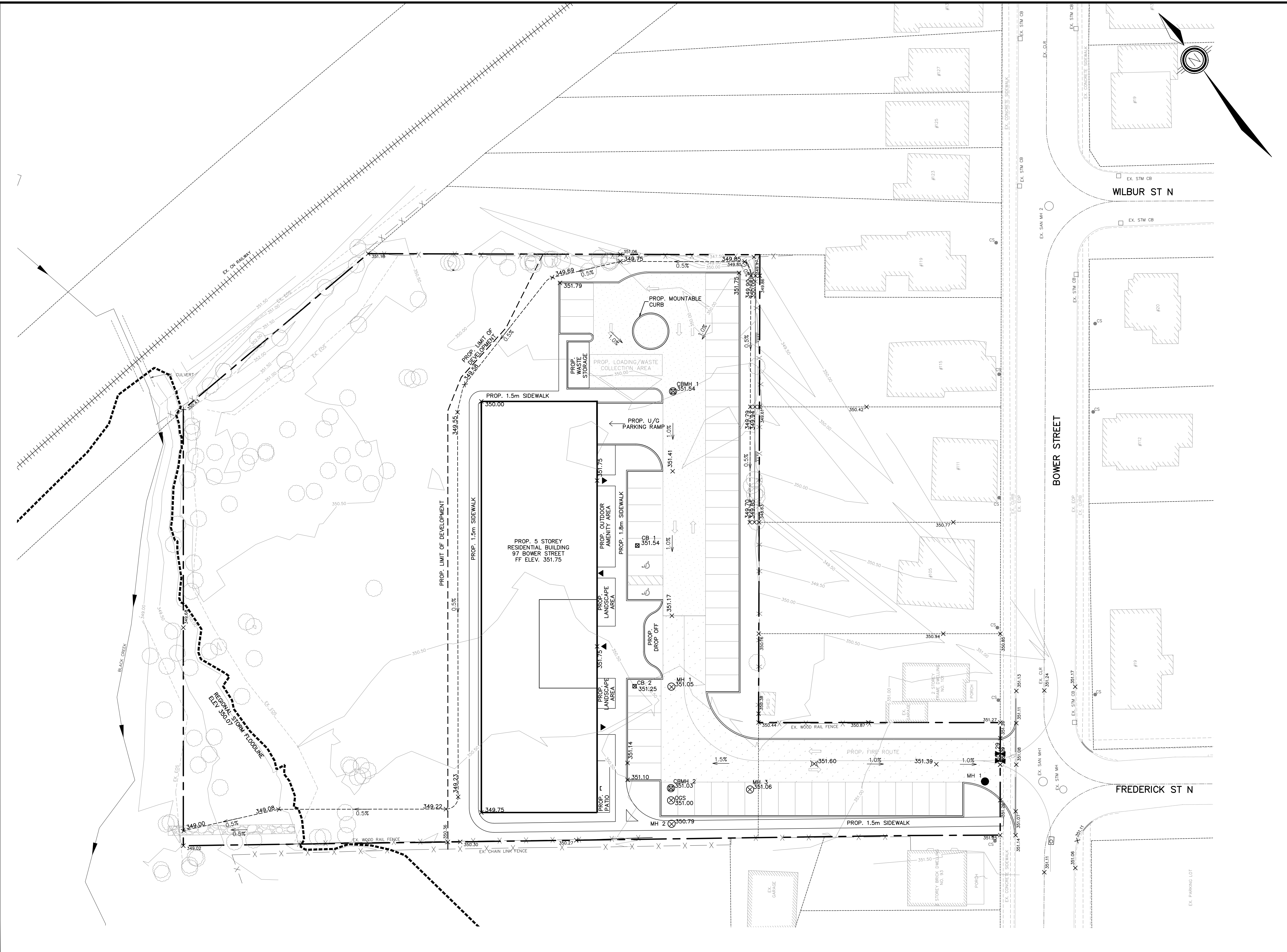


P:\AutoCAD\Working\Folders\24029 - KLM, 97 Bower Street, Acton\LAYOUT SHEETS\24029 - FSR_LAYOUTS.dwg, Layout:SG, Plotted Sep 22, 2025 @ 11:02am by kostova @ PEARSON ENGINEERING LTD.



KEY MAP
NTS

LEGEND

- ◻ STM CB PROPOSED CATCH BASIN
- ◻ EX. CB EXISTING CATCH BASIN
- ◻ STM DCB PROPOSED DOUBLE CATCH BASIN
- STM MH PROPOSED STORM MANHOLE
- EX. STM MH EXISTING STORM MANHOLE
- SAN MH PROPOSED SANITARY MANHOLE
- EX. SAN MH EXISTING SANITARY MANHOLE
- ◆ HYD. PROPOSED FIRE HYDRANT
- ◆ EX. HYV EXISTING FIRE HYDRANT
- ▽ VB WATER VALVE
- × 254.63 PROPOSED ELEVATION
- × 254.09 EXISTING ELEVATION
- 1.5% PROPOSED DIRECTION AND GRADE
- BACK OF CURB
- EDGE OF PAVEMENT
- PROP. CURB CUT LOCATION
- EX. CURB CUT LOCATION
- () HIGH POINT
- - - - - PROPERTY LINE
- ||||| EXISTING RAILWAY TRACK
- ▨ PROP. LIGHT DUTY ASPHALT
- ▨ PROP. HEAVY DUTY ASPHALT
- EX. TREES
- - - - - REGIONAL STORM FLOODLINE

REGIONAL STORM FLOODLINE TAKEN FROM
FLOODLINE PLAN BY AMEC
DATED JUNE 2012

NO.	REVISION NOTE	DATE	BY

BENCHMARK
TOP OF IRON BAR LOCATED AT SOUTH WEST LOT CORNER ELEVATION: 351.26

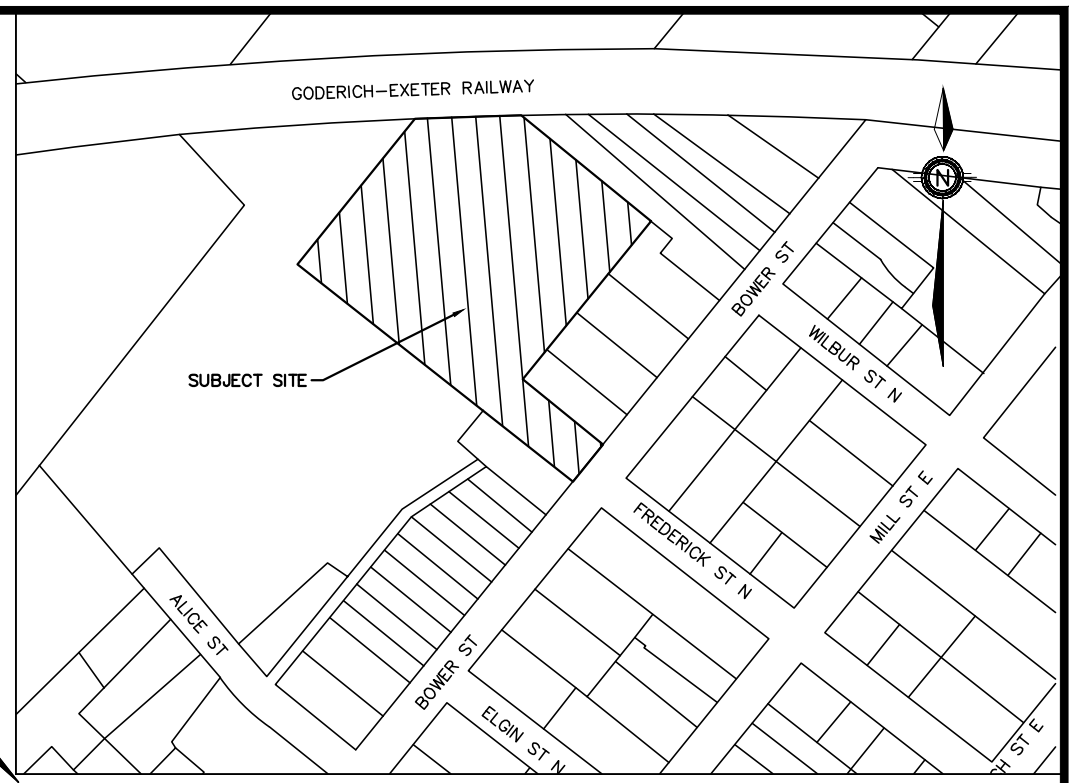
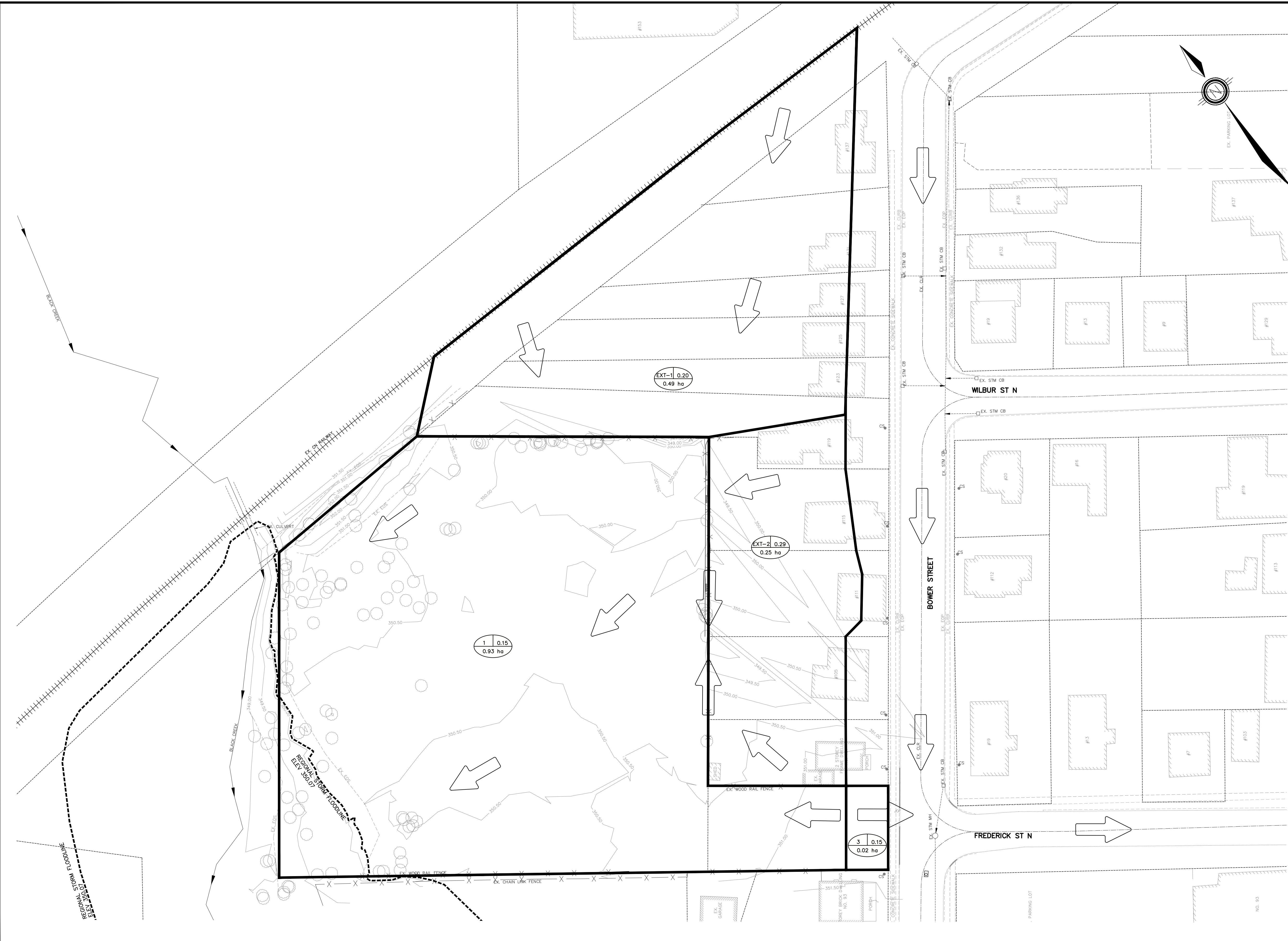
CASTLEGROVE DEVELOPMENTS INC.
97 BOWER STREET,
ACTON, ONTARIO

SITE GRADING PLAN

PEARSON ENGINEERING
PEARSONENG.COM PH. 705.719.4785

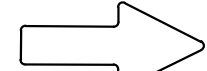

DESIGNED BY	AA	HORIZ SCALE	1:300	PROJECT #	24029
DRAWN BY	KV	VERT SCALE	N/A	DRAWING #	SG-1
CHECKED BY	MWD	DATE	SEPTEMBER 2025	REVISION #	0

P:\AutoCAD\Working\Folders\24029 - KLM, 97 Bower Street, Acton\Layout SHEETS\24029 - FSR_LAYOUTS.dwg Layout:STM-1 Plotted Sep 22, 2025 @ 11:02am by kvasova @ PEARSON ENGINEERING LTD.



KEY MAP
NTS

LEGEND

-  OVERLAND FLOW DIRECTION
- CATCHMENT AREA $\frac{1}{1.00 \text{ ha}}$ RUNOFF COEFFICIENT $\frac{0.75}{1.00}$
-  CATCHMENT BOUNDARY


REGIONAL STORM FLOODLINE TAKEN FROM
FLOODLINE PLAN BY AMEC
DATED JUNE 2012

NO.	REVISION NOTE	DATE	BY

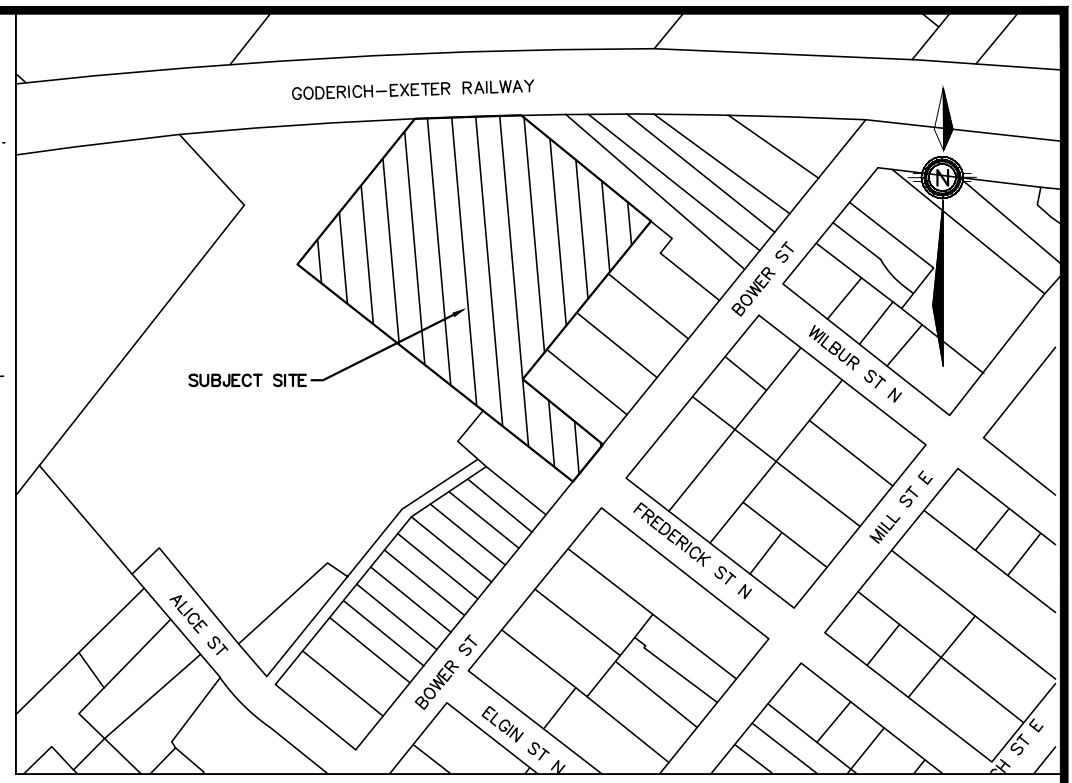
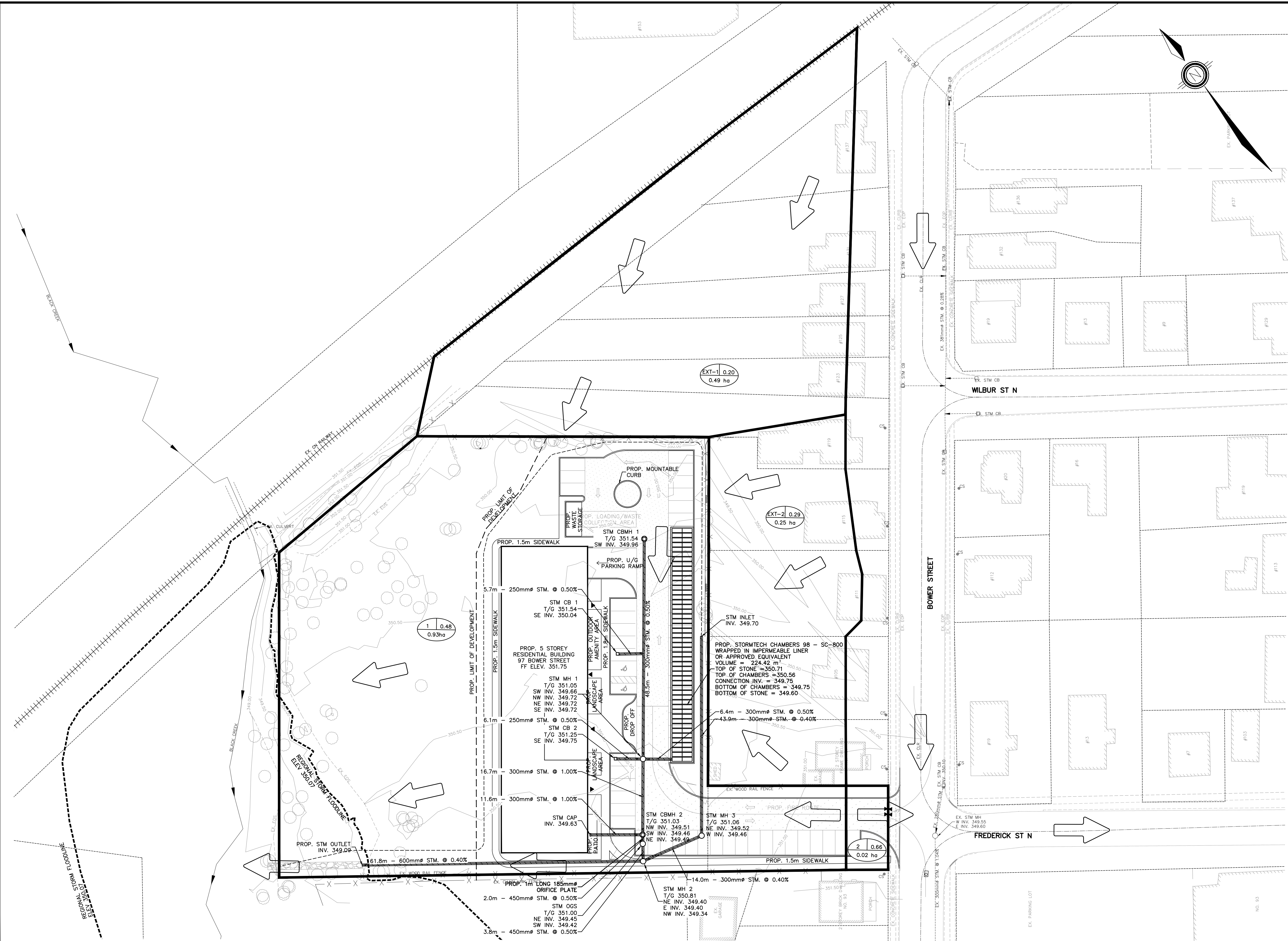
BENCHMARK
TOP OF IRON BAR LOCATED AT SOUTH WEST LOT CORNER ELEVATION: 351.26

CASTLEGROVE DEVELOPMENTS INC.
97 BOWER STREET,
ACTON, ONTARIO

PRE- DEVELOPMENT
STORM CATCHMENT PLAN

	PEARSON ENGINEERING		PEARSONENG.COM PH. 705.719.4785	
	DESIGNED BY	AA	HORIZ SCALE	1:400
	DRAWN BY	KV	VERT SCALE	N/A
CHECKED BY	MWD	DATE	SEPTEMBER 2025	REVISION #
		PROJECT #	24029	DRAWING #
				STM-1
				REVISION #
				0

P:\AutoCAD\Working\Folders\24029 - KLM, 97 Bower Street, Acton\Layout SHEETS\24029 - FSR_LAYOUTS.dwg Layout:STM-2 Plotted Sep 22, 2025 @ 11:03am by kvanava @ PEARSON ENGINEERING LTD.



KEY MAP NTS

LEGEND

- OVERLAND FLOW DIRECTION
- CATCHMENT AREA (1 | 0.79) RUNOFF COEFFICIENT (1.00 hg)
- AREA IN HECTARES (0.48 | 0.25 | 0.66)
- CATCHMENT BOUNDARY

REGIONAL STORM FLOODLINE TAKEN FROM FLOODLINE PLAN BY AMEC DATED JUNE 2012

NO.	REVISION NOTE	DATE	BY

BENCHMARK
TOP OF IRON BAR LOCATED AT SOUTH WEST LOT CORNER ELEVATION: 351.26

CASTLEGROVE DEVELOPMENTS INC.
97 BOWER STREET,
ACTON, ONTARIO

POST- DEVELOPMENT
STORM CATCHMENT PLAN

	DESIGNED BY	AA	HORIZ SCALE	1:400	PROJECT #	24029
	DRAWN BY	KV	VERT SCALE	N/A	DRAWING #	STM-2
	CHECKED BY	MWD	DATE	SEPTEMBER 2025	REVISION #	0