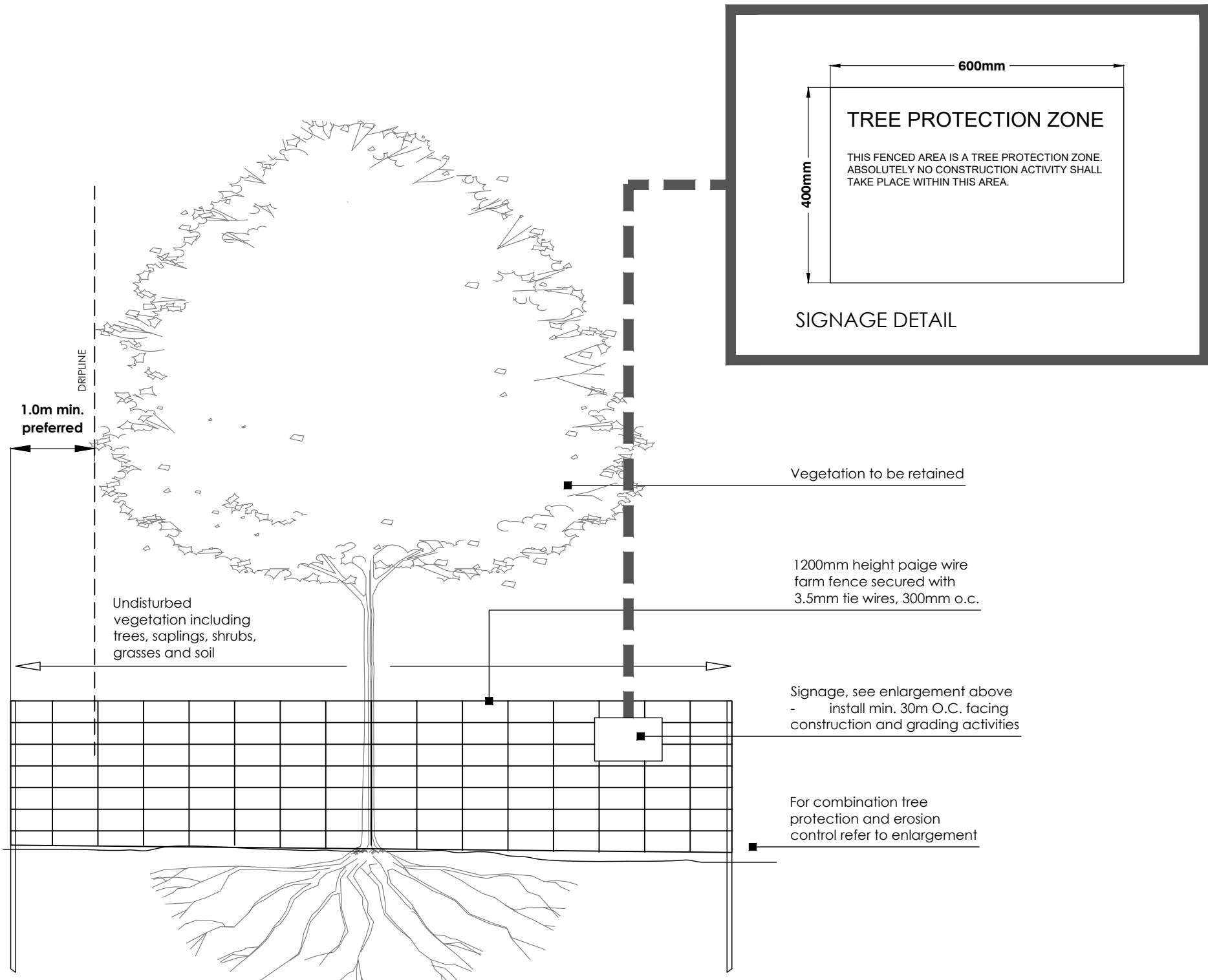


EXISTING VEGETATION IDENTIFICATION TABLE

Tree #	Common Name	Scientific Name	DBH	TI	CS	CV	Con.	CW	CC	Location	Comments	Action	Reason
1	Black Walnut	Juglans nigra	~15	G	G	G	G	5	2	Neighbouring	Growing below retaining wall	RETAIN	
2	Black Walnut	Juglans nigra	~10	G	G	G	G	4	2	Neighbouring	Growing below retaining wall	RETAIN	
3	Norway Maple	Acer platanoides	~11, 12	F	FG	G	F	6	2	Neighbouring	Union at 0.3 m	RETAIN	
4	Norway Maple	Acer platanoides	~12	G	G	G	G	6	2	Neighbouring		RETAIN	
5	Norway Maple	Acer platanoides	~18	G	G	G	G	6	2	Neighbouring		RETAIN	
6	Norway Maple	Acer platanoides	24	G	G	G	G	7	2	Neighbouring		RETAIN	
7	Norway Maple	Acer platanoides	24, 11	F	FG	G	F	8	2	Neighbouring	Union at ground, seam	RETAIN	
8	Norway Maple	Acer platanoides	18	F	G	G	F	6	2	Neighbouring	Seam, cavity	RETAIN	
9	Norway Maple	Acer platanoides	23	G	FG	G	FG	7	2	Neighbouring		RETAIN	
10	Norway Maple	Acer platanoides	24	G	G	G	G	8	2	Neighbouring		RETAIN	
11	Norway Maple	Acer platanoides	11	G	F	F	F	6	4	Neighbouring	Understorey	RETAIN	
12	Norway Maple	Acer platanoides	19, 10	F	FG	G	F	6	2	Neighbouring	Union at ground	RETAIN	
13	Norway Maple	Acer platanoides	17	G	G	G	G	6	2	Neighbouring		RETAIN	
14	Norway Maple	Acer platanoides	28	G	G	G	G	8	2	Neighbouring		RETAIN	
15	Norway Maple	Acer platanoides	23	G	G	G	G	8	2	Neighbouring		RETAIN	
16	Norway Maple	Acer platanoides	10	G	G	G	G	4	3	Neighbouring		RETAIN	
17	Norway Maple	Acer platanoides	29	G	G	G	G	8	2	Neighbouring	Light lean	RETAIN	
18	Norway Maple	Acer platanoides	12	G	G	G	G	6	3	Neighbouring		RETAIN	



Tree Protection Fencing (with silt fence)

N.T.S.



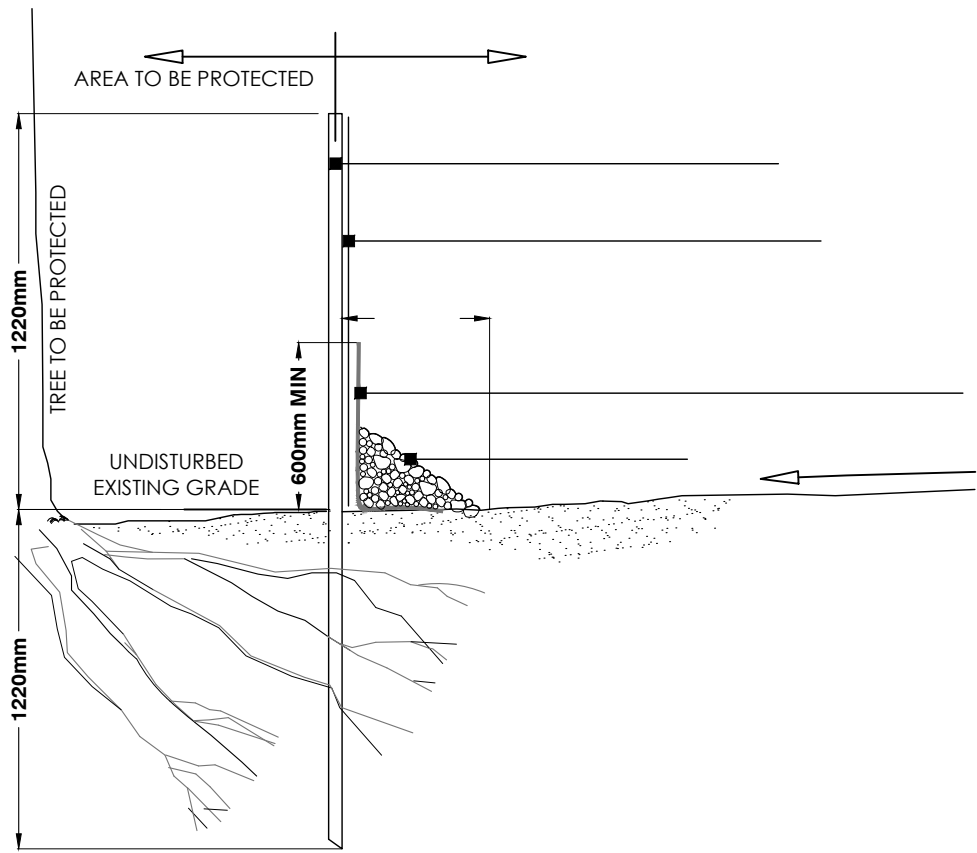
Tree# 1-4 base of trees



Tree #5

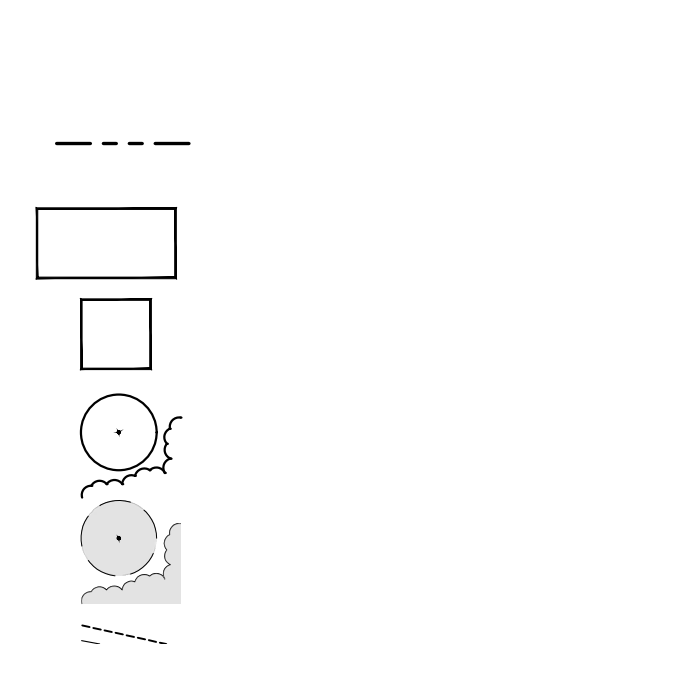
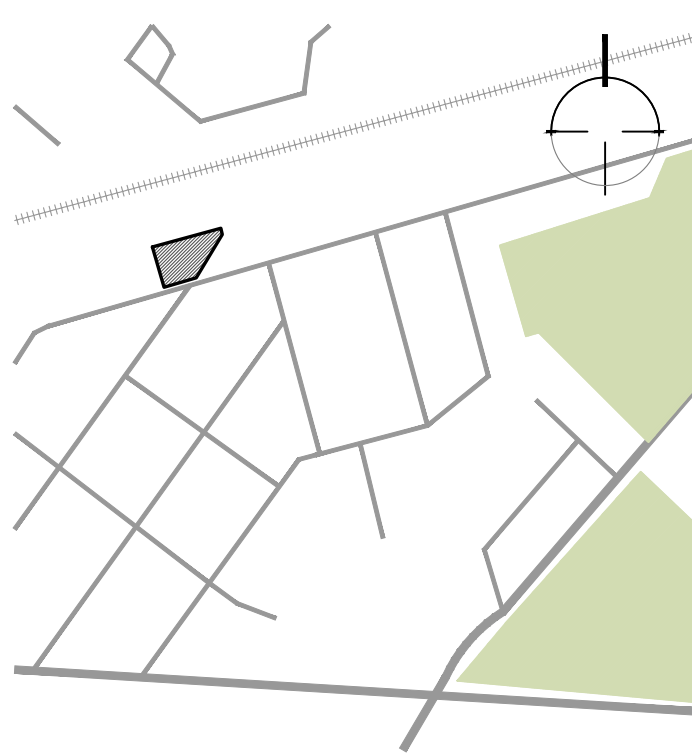


Trees #13 - 18

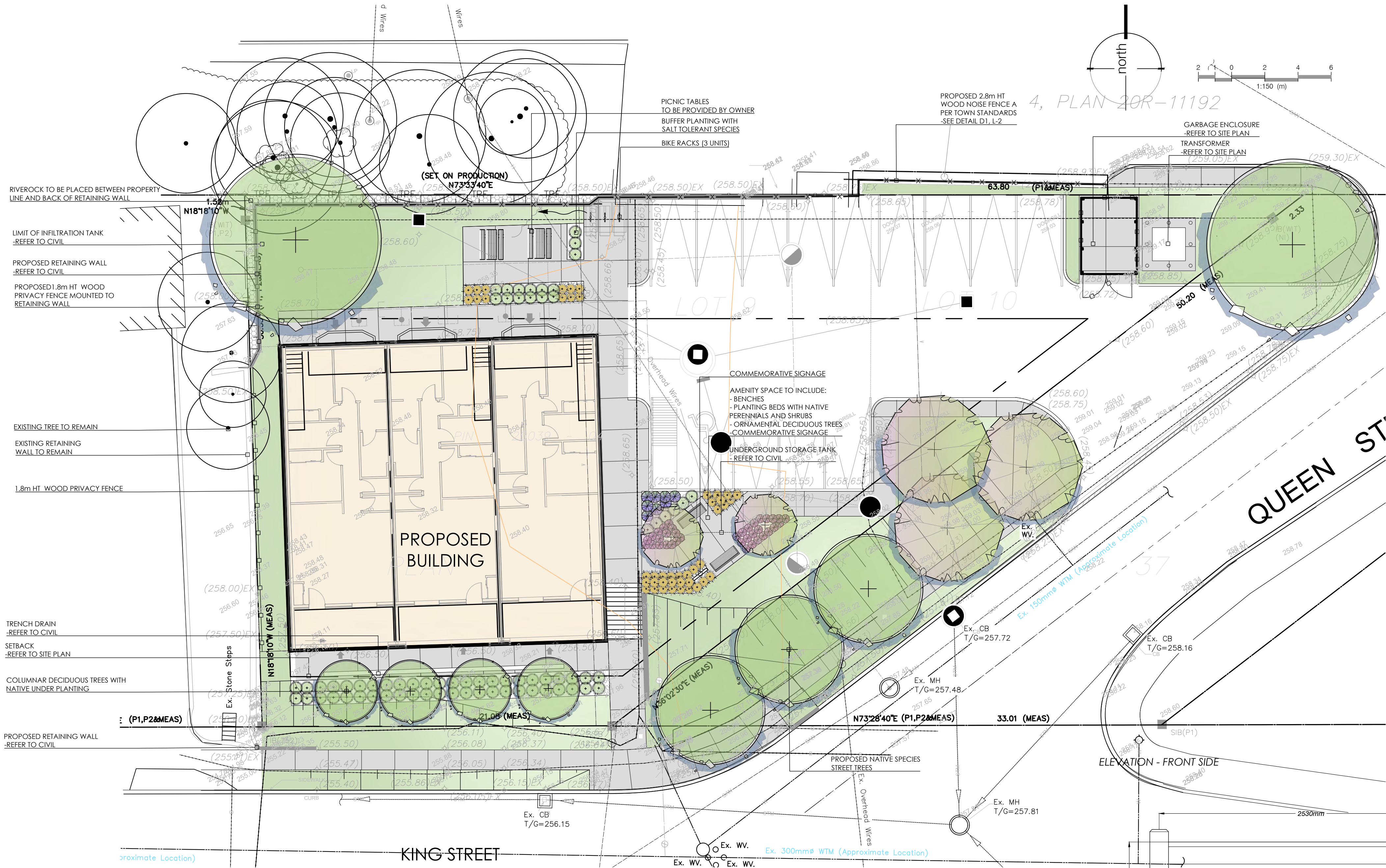


NOTES:

- The area within the dripline of all existing trees shall be properly protected with temporary fencing.
- The area within the protective fencing shall remain undisturbed with no construction activity, grade changes, surface treatment, compaction, or excavation. Area shall not be used for the storage of building materials or equipment access/storage or project related garbage.
- Tree protection measures shall be installed prior to any demolition, tree removal or construction and shall remain until the completion of fine grading and sodding or seeding.
- Prune all trees for dead, diseased, weak or hazardous branches only. Also trim back branches which will interfere with construction, prune for structural restoration where necessary.
- No stockpiles and/or excavated material shall be placed within the tree preservation area.
- No rigging cable shall be wrapped around or installed to trees.
- Where root systems of protected trees are exposed directly adjacent to or damaged by construction work they are to be root pruned and the area back filled with topsoil to prevent root desiccation. An Arborist is required to be on site for any injury or cutting to the root system or surface roots of a protected tree.
- Any fine grading within the preservation area is to be done by hand, no heavy equipment is permitted within the preservation zone.
- Sediment accumulations to be removed by subdivider/builder when sediment deposits reach within 150mm of top of filter fabric barrier.
- This detail does not represent any particular tree species.

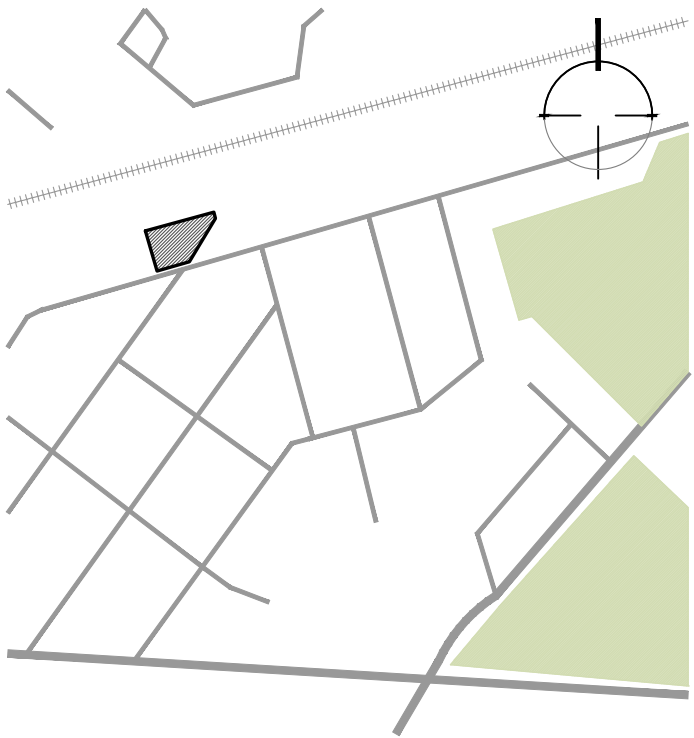




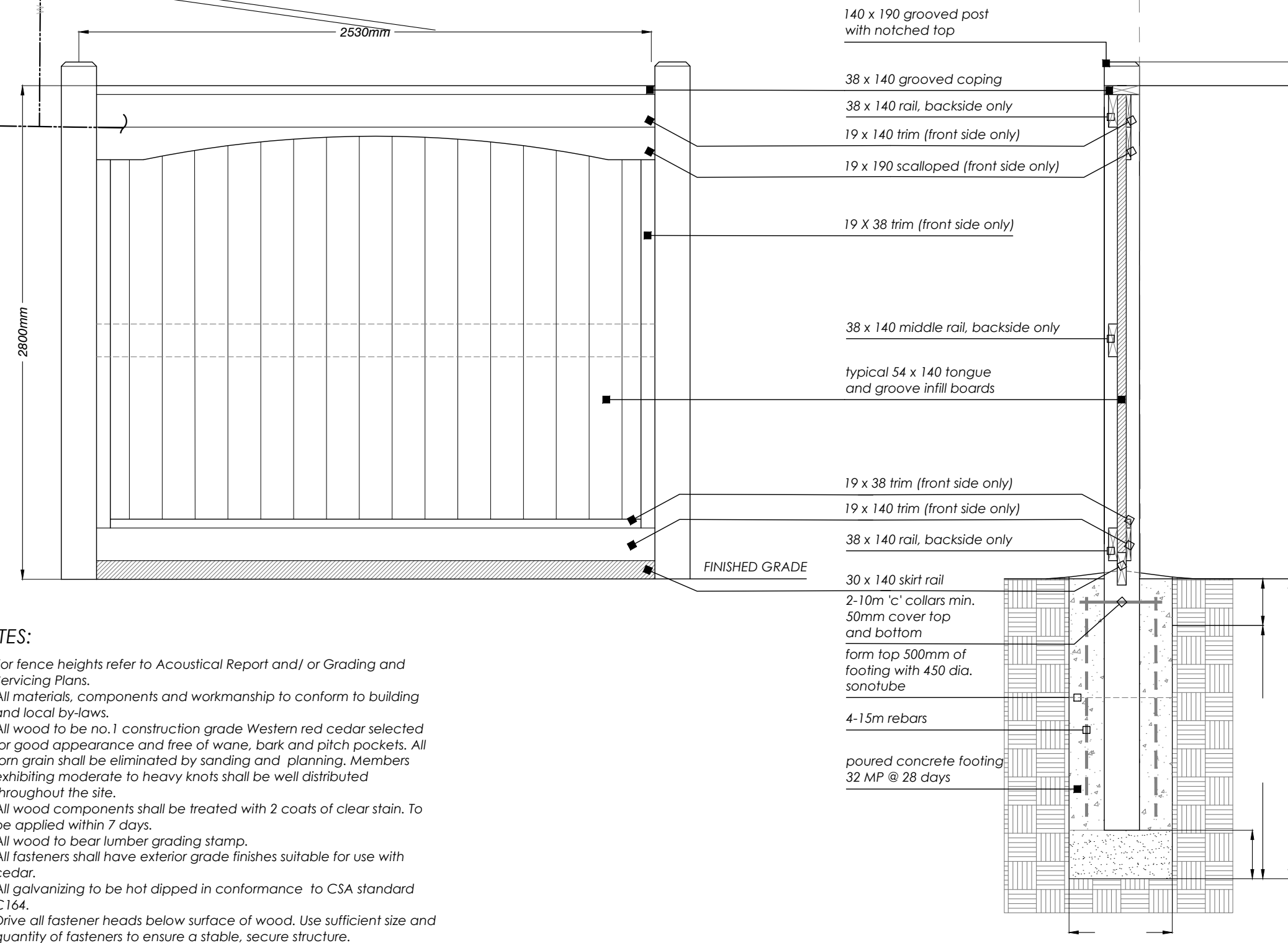


LANDSCAPE NOTES:

1. All work to be carried out in accordance with by-laws and codes having jurisdiction over site location.
2. Complete all work to the satisfaction of the Landscape Architect.
3. Report any changes, discrepancies or substitutions to the Landscape Architect for review. Obtain approval from the Landscape Architect before proceeding.
4. It is the contractor's responsibility to determine existing service locations.
5. Exact locations of plant material will be determined by placement of site services such as hydro vaults, meters, utilities roof rain water leaders, driveways, light standards, etc.
6. All plant material locations to be staked or marked out and approved by Landscape Architect prior to installation.
7. Supply all plant material in accordance with the Canadian Standards for Nursery Stock (8th ed.).
8. Install plant material according to details shown.
9. Supply and place mulch in accordance with Canadian Landscape Standard (Section 10, Mulching). Disturbed soil areas around trees and shrubs are to be covered with shredded conifer bark mulch such as 'Cedar Bark Mulch' by All Treat Farms or 'Classic Cedar Mulch' by Gro-Bark, or approved equivalent. Alternative mulches must be approved by the Landscape Architect.
10. Contractor to utilize layout dimensions where provided.
11. Provide planting bed area as noted on the drawing or to accommodate mature size of plant material.
12. All support systems must be removed by the contractor at time of final acceptance. No extras will be paid to complete this work.
13. Supply and place topsoil in accordance with Canadian Landscape Standard (Section 4, Grading & Drainage and Section 6, Growing Medium) to a minimum depth of 150mm unless otherwise specified.
14. Supply and place sod in accordance with Canadian Landscape Standard (Section 7, Lawns & Grass and Section 8, Turfgrass Sod) unless otherwise specified.
15. Supply and place seed in accordance with Canadian Landscape Standard (Section 4, Grading & Drainage and Section 6, Growing Medium) unless otherwise specified. All 5:1 or greater slopes to be seeded with topsoil. Contractor to provide necessary erosion control protection as required to ensure soil stabilization and proper seed germination.
16. All dimensions in meters unless otherwise noted.
17. If discrepancies arise between plant material count shown on drawing and plant list, the drawing shall be considered correct.
18. Contractor to provide minimum one (1) year warranty (including trees on municipal property) from date accepted on all work unless otherwise specified.
19. Any site plan or grading and servicing shown is for information only. Refer to approved drawings.
20. Not for construction unless stamped, signed and dated by Landscape Architect.
21. Drawings not to be reproduced without written consent from Landscape Architect.
22. Approval of landscape plan to be obtained from municipality.
23. All plant material to be planted a minimum of 1.0m from any swales or ditches.
24. For grading and servicing information refer to the consulting Engineer's drawings.
25. For lighting information and power distribution refer to the electrical consultant's drawings.



ELEVATION - FRONT SIDE



NOTES:

1. For fence heights refer to Acoustical Report and/or Grading and Servicing Plans.
2. All materials, components and workmanship to conform to building and local by-laws.
3. All wood to be no.1 construction grade Western red cedar selected for good appearance and free of wane, bark and pitch pockets. All form grain shall be eliminated by sanding and planing. Members exhibiting moderate to heavy knots shall be well distributed throughout the site.
4. All wood components shall be treated with 2 coats of clear stain. To be applied within 7 days.
5. All wood to bear lumber grading stamp.
6. All fasteners shall have exterior grade finishes suitable for use with cedar.
7. All galvanizing to be hot dipped in conformance to CSA standard C164.
8. Drive all fastener heads below surface of wood. Use sufficient size and quantity of fasteners to ensure a stable, secure structure.
9. Step fence panels minimum of 100 - 200mm at posts as required by grade conditions. Sloping of panels may be required for certain grade conditions - Consultant's approval required.
10. Lumber sizes are actual sizes rather than nominal sizes.
11. Concrete to have minimum compressive strength of 25 MPa @ 28 days with 5-7% air entrainment.
12. See landscape plan for fence location.
13. Acoustic fence shall be continuous with no gaps and have a minimum surface density of 20 kg/m<sup>2</sup> to meet M.O.E. standards.

2.8m HT Wood Acoustic Fence (as per Town of Georgetown standards)

SCALE: NTS

