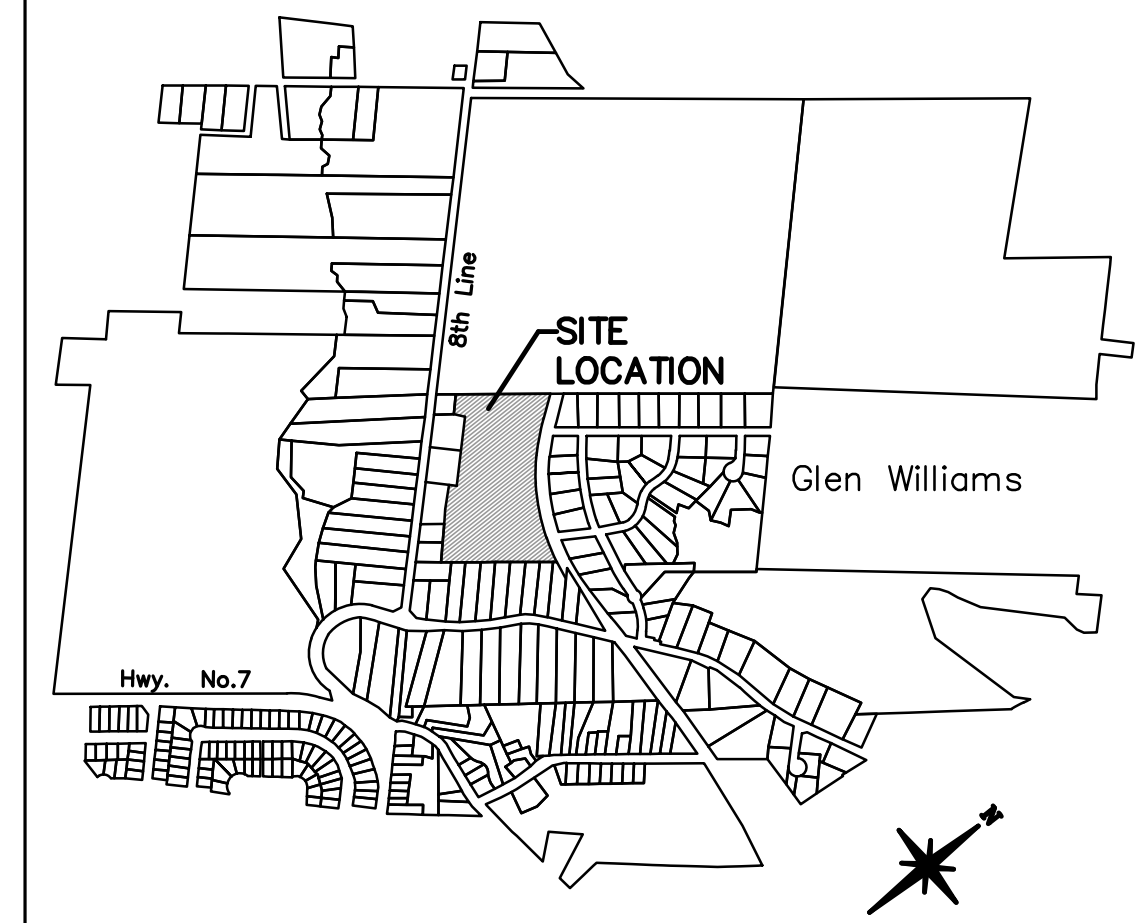
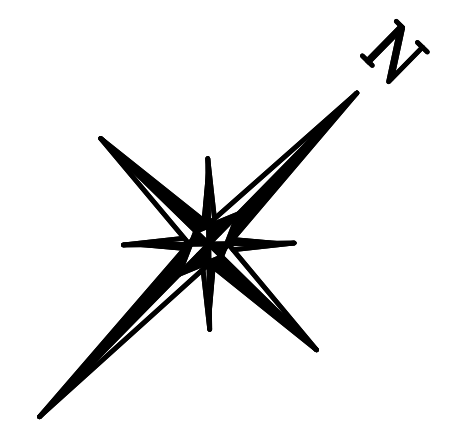


ROAD ALLOWANCE BETWEEN CONCESSIONS 8 AND 9
8TH LINE



KEY PLAN
NOT TO SCALE

DRAFT PLAN OF SUBDIVISION
OF
PART OF LOT 21
CONCESSION 9
(GEOGRAPHIC TOWNSHIP OF ESQUESING)
TOWN OF HALTON HILLS
REGIONAL MUNICIPALITY OF HALTON
SCALE: 1:750



METRIC:
DISTANCES SHOWN ON THIS PLAN ARE IN METRES AND CAN
BE CONVERTED TO FEET BY DIVIDING BY 0.3048

GENERAL NOTES

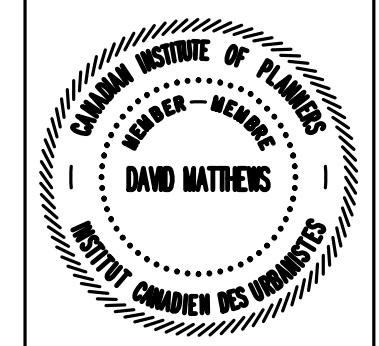
LAND USE	LOTS/BLOCKS	AREA(Ha.)
SINGLE-DETACHED RESIDENTIAL (@ 5 UNITS/NET Ha.)	LOTS 1-32	5.488
STORMWATER MANAGEMENT POND	BLOCK 33	0.439
ROAD 20m RIGHT-OF-WAY x 472m LENGTH		.959
TOTAL AREA		6.886 Hectares

FRONTAGES SHOWN AT 4.5m SETBACK LINE

ADDITIONAL NOTES
(UNDER SECTION 51 (2) OF THE PLANNING ACT)
INFORMATION REQUIRED BY CLAUSES a,b,c,e,f,g,j & l SHOWN ON DRAFT PLAN AND KEY PLAN.
(d) RESIDENTIAL, SWM POND
(h) MUNICIPAL SUPPLY TO BE MADE AVAILABLE
(i) CLAY LOAM
(k) FULL MUNICIPAL SERVICES TO BE MADE AVAILABLE

OWNERS CERTIFICATE
2147925 ONTARIO INC. BEING THE REGISTERED OWNERS
OF THE SUBJECT LANDS HEREBY AUTHORIZES MATTHEWS PLANNING &
MANAGEMENT LTD. TO PREPARE AND SUBMIT THIS DRAFT PLAN OF
SUBDIVISION FOR APPROVAL.
2147925 ONTARIO INC.
MAY 15, 2009 SIGNATURE ON FILE

SURVEYORS CERTIFICATE
I HEREBY CERTIFY THAT THE BOUNDARIES OF THE LANDS TO BE SUBDIVIDED AND THEIR RELATIONSHIP TO THE
ADJACENT LANDS ARE ACCURATELY AND CORRECTLY SHOWN.
JUNE 1, 2009 SIGNATURE ON FILE
DAN C. DOLLIVER, ONTARIO LAND SURVEYOR
DOLLIVER SURVEYING INC.



MATTHEWS PLANNING & MANAGEMENT LTD.
Consultants in Planning and Land Economics
1267 Dorval Drive, Unit 47 Oakville, Ontario
L6M 3Z5 (416) 565-7480

REVISED JUNE 22, 2018
REVISED MAY 10, 2018