

Ministry of Tourism, Culture and Sport

Archaeology Programs Unit
Programs and Services Branch
Culture Division
401 Bay Street, Suite 1700
Toronto ON M7A 0A7
Tel.: (416) 314-7152
Email: John.Dunlop@ontario.ca

Ministère du Tourisme, de la Culture et du Sport

Unité des programmes d'archéologie
Direction des programmes et des services
Division de culture
401, rue Bay, bureau 1700
Toronto ON M7A 0A7
Tél. : (416) 314-7152
Email: John.Dunlop@ontario.ca



Jul 7, 2016

Thomas Irvin (P379)
This Land Archaeology Inc.
136 Orsi Newmarket ON L3Y 3H6

RE: Review and Entry into the Ontario Public Register of Archaeological Reports: Archaeological Assessment Report Entitled, "REPORT ON THE STAGE 1 AND 2 ARCHAEOLOGICAL ASSESSMENT OF FIELDGATE DEVELOPMENTS LAND, PART OF LOTS 11 AND 12, CONCESSION 11, TOWN OF HALTON HILLS, REGIONAL MUNICIPALITY OF HALTON, HISTORIC HALTON REGION, GEOGRAPHIC TOWNSHIP OF ESQUESING NORTH, ONTARIO ", Dated Jun 22, 2016, Filed with MTCS Toronto Office on Jun 29, 2016, MTCS Project Information Form Number P379-0015-2015, MTCS File Number 0004568

Dear Mr. Irvin:

This office has reviewed the above-mentioned report, which has been submitted to this ministry as a condition of licensing in accordance with Part VI of the Ontario Heritage Act, R.S.O. 1990, c 0.18.¹ This review has been carried out in order to determine whether the licensed professional consultant archaeologist has met the terms and conditions of their licence, that the licensee assessed the property and documented archaeological resources using a process that accords with the 2011 Standards and Guidelines for Consultant Archaeologists set by the ministry, and that the archaeological fieldwork and report recommendations are consistent with the conservation, protection and preservation of the cultural heritage of Ontario.

The report documents the assessment of the study area as depicted in Figures 6 and 11 of the above titled report and recommends the following:

Since the Stage 2 assessment revealed the presence of four 19th century sites which hold Cultural Heritage Value and Interest recommendations are as follows:

- o An in-depth Stage 3 archival study will be conducted for Part of Lots 11 and 12, Concession 11, in the Town of Halton Hills given the location of the archaeological sites in adherence with the 2011 Standards and Guidelines: 3.1.
- o Archaeological assessment has only been completed on the Developable Lands related to this residential development; should work be planned outside of the defined Study Area (Figure 11) additional archaeological assessment will be required.
- o Please note that two archaeological sites exist within proximity to the Study Area (AjGx-80 and AjGx-81), should development be planned outside of the Study Area further archaeological assessment are required and should account for these two sites.

Norval Site 1 (AjGx-261):

o A Stage 3 site specific assessment is recommended. This will involve both a Controlled Surface Pick-up and Unit Excavation. The strategy for the Stage 3 test archaeological assessment will involve excavating a 10m grid across the site limits with exploratory infill units of 40%.

Norval Site 2 (AjGx-262):

o A Stage 3 site specific assessment is recommended. This will involve both a Controlled Surface Pick-up and Unit Excavation. The strategy for the Stage 3 test archaeological assessment will involve excavating a 10m grid across the site limits with exploratory infill units of 40%.

Norval Site 3 (AjGx-263):

o A Stage 3 site specific assessment is recommended. This will involve both a Controlled Surface Pick-up and Unit Excavation. The strategy for the Stage 3 test archaeological assessment will involve excavating a 10m grid across the site limits with exploratory infill units of 40%.

Norval Site 4 (AjGx-265):

o Due to the low number of artifacts found, Norval Site 4 (AjGx-265) has been sufficiently documented through the Stage 2 assessment and holds no further cultural heritage value or interest.
o No further archaeological assessments are required for this site.

Norval Site 5 (AjGx-266):

o Due to the low number of artifacts found, Norval Site 5 (AjGx-266) has been sufficiently documented through the Stage 2 assessment and holds no further cultural heritage value or interest.
o No further archaeological assessments are required for this site.

Norval Site 6 (AjGx-264):

o A Stage 3 site specific assessment is recommended. This will involve both a Controlled Surface Pick-up and Unit Excavation. The strategy for the Stage 3 test archaeological assessment will involve excavating a 10m grid across the site limits with exploratory infill units of 40%.

The four isolated findspots:

o No further work is recommended as intensification did not reveal any additional finds.

Based on the information contained in the report, the ministry is satisfied that the fieldwork and reporting for the archaeological assessment are consistent with the ministry's 2011 Standards and Guidelines for Consultant Archaeologists and the terms and conditions for archaeological licences. This report has been entered into the Ontario Public Register of Archaeological Reports. Please note that the ministry makes no representation or warranty as to the completeness, accuracy or quality of reports in the register.

Should you require any further information regarding this matter, please feel free to contact me.

Sincerely,

John Dunlop
Archaeology Review Officer

cc. Archaeology Licensing Officer
Maria Herrera, Fieldgate Land Developments Limited
John Linhart, Halton Hills

¹In no way will the ministry be liable for any harm, damages, costs, expenses, losses, claims or actions that may result: (a) if the Report(s) or its recommendations are discovered to be inaccurate, incomplete, misleading or fraudulent; or (b) from the issuance of this letter. Further measures may need to be taken in the event that additional artifacts or archaeological sites are identified or the Report(s) is otherwise found to be inaccurate, incomplete, misleading or fraudulent.

PRELIMINARY DISCUSSION WITH THE TOWN DEVELOPMENT CONCEPT PLAN FIELDGATE - RUSSELL FARM

PART OF LOTS 11 & 12,
CONCESSION 11,
TOWN OF HALTON HILLS
REGION OF HALTON

Development Statistics
Site Area: 53.33ha (131.78ac)

Unit Types:
Singles
Townhouses

Notes:
Property Boundary
Approximate Greenbelt limit
Approximate ROPA 38 Key Features

***CONCEPTUAL & FOR DISCUSSION
PURPOSES ONLY***



Scale: 1:5,000
March 17, 2015



GLEN SCHNARR & ASSOCIATES INC.
URBAN & REGIONAL PLANNERS, LAND DEVELOPMENT CONSULTANTS
SUITE 700 10 KINGSBRIDGE GARDEN CIRCLE,
MISSISSAUGA, ONTARIO, L5R 3K6
TEL (905) 568-8888 FAX (905) 568-8894 www.gsal.ca

June 22, 2016

Supplementary Documentation for:

**REPORT ON THE STAGE 1 AND 2
ARCHAEOLOGICAL ASSESSMENT OF
FIELDGATE DEVELOPMENTS LAND,
PART OF LOTS 11 AND 12, CONCESSION 11,
TOWN OF HALTON HILLS,
HISTORIC HALTON REGION, GEOGRAPHIC TOWNSHIP OF
ESQUESING NORTH, ONTARIO**

Submitted to:

Fieldgate Developments,

And to:

The Ministry of Tourism, Culture and Sport

Licensee:

Thomas Irvin, Licence Number P379

PIF #: P379-0015-2015



This Land
Archaeology
Inc.

REPORT ON THE STAGE 1 AND 2 ARCHAEOLOGICAL ASSESSMENT OF FIELDGATE LAND DEVELOPMENTS LIMITED'S PROPERTY

Table of Contents

Select [Table of Contents to jump to subject.](#)

Table of Contents	i
Table 3: GPS Coordinates	1
Figure 8: Results of Assessment showing the 2 Permanent Reference Points and the Location and Stage 2 Site Boundaries and the Isolated Findspots	2
Figure 9: Location and Direction of Some Site Specific Photographs	2
Figure 10: Results of Assessment showing the Site Boundaries and the 5 site reference points for each site	2
Figure 11: Results of Assessment with Draft Plan Overlaid	2

**REPORT ON THE STAGE 1 AND 2 ARCHAEOLOGICAL ASSESSMENT
OF FIELDGATE LAND DEVELOPMENTS LIMITED'S PROPERTY**

Table 3: GPS Coordinates

Fieldgate Developments Part of Lots 11 and 12, Concession 11, Town of Halton Hills		
Figure 8		
Permanent Reference Points		
ID	UTM_X	UTM_Y
1	592145.271	4832812.784
2	591736.808	4832291.786

5 Site Reference Points For Each Site Illustrated on Figure 10					
Norval Site 1 (AjGx-261)			Norval Site 4 (AjGx-265)		
ID	UTM_X	UTM_Y	ID	UTM_X	UTM_Y
23	591467.372	4832563.362	6	591985.075	4832921.522
24	591510.231	4832568.857	7	591984.378	4832878.871
25	591492.648	4832535.888	8	591961.900	4832889.325
26	591486.054	4832596.330	9	592006.332	4832888.454
27	591488.252	4832566.659	10	591984.029	4832890.371
Norval Site 2 (AjGx-262)			Norval Site 5 (AjGx-266)		
ID	UTM_X	UTM_Y	ID	UTM_X	UTM_Y
16	591514.627	4832719.411	11	591923.760	4832613.904
17	591510.231	4832661.168	12	591924.781	4832588.116
20	591512.429	4832691.938	13	591907.930	4832597.818
21	591473.966	4832694.136	14	591939.590	4832598.839
22	591571.772	4832690.839	15	591924.015	4832599.350
Norval Site 3 (AjGx-263)			Norval Site 6 (AjGx-264)		
ID	UTM_X	UTM_Y	ID	UTM_X	UTM_Y
1	591753.097	4832958.980	28	591351.984	4832724.906
2	591759.690	4832897.440	29	591347.588	4832680.948
3	591703.644	4832920.517	30	591322.312	4832706.224
4	591798.153	4832926.012	31	591377.259	4832705.125
5	591753.097	4832924.913	32	591364.360	4832700.630

REPORT ON THE STAGE 1 AND 2 ARCHAEOLOGICAL ASSESSMENT OF FIELDGATE LAND DEVELOPMENTS LIMITED'S PROPERTY

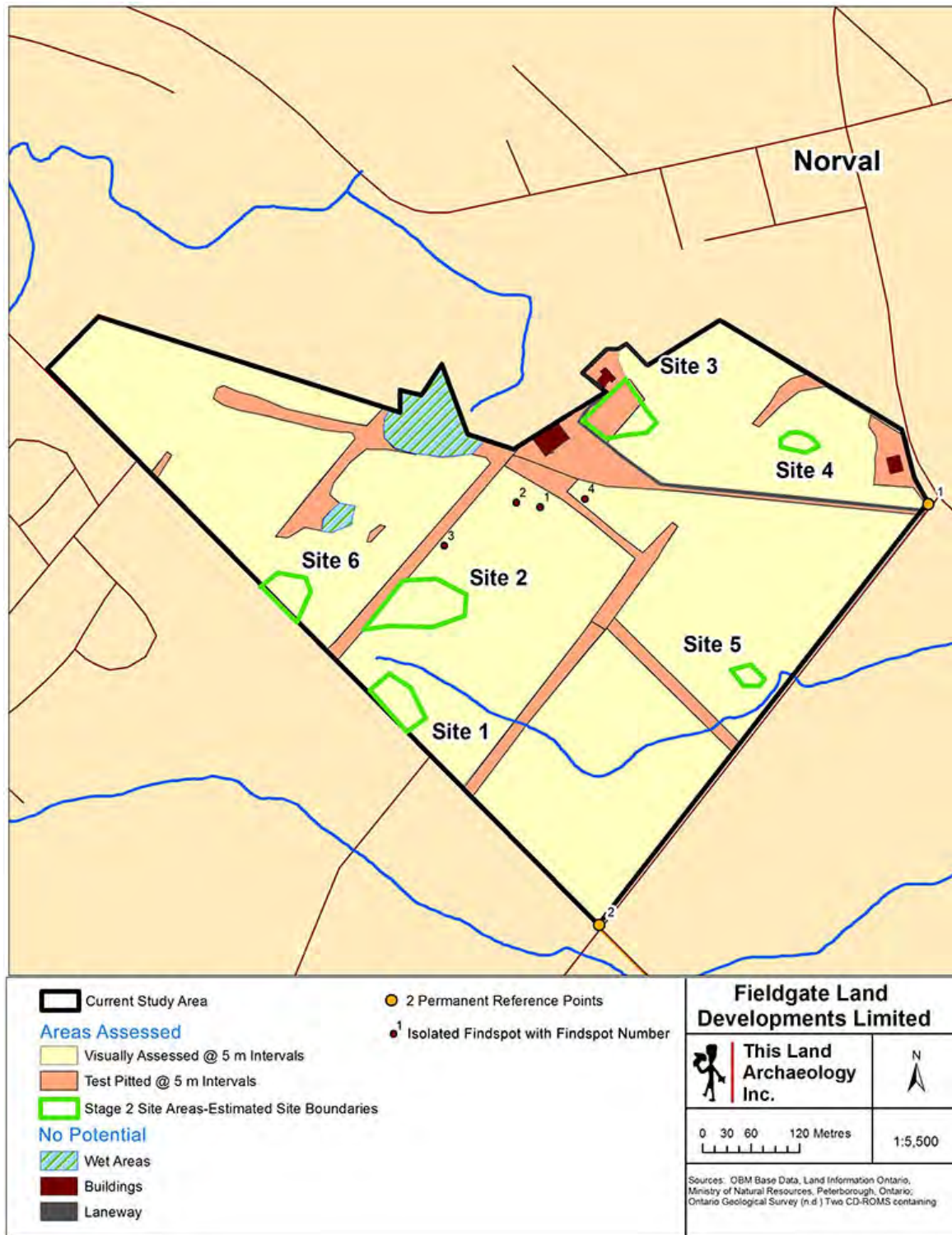


Figure 8: Results of Assessment showing the 2 Permanent Reference Points and the Location and Stage 2 Site Boundaries and the Isolated Findspots

REPORT ON THE STAGE 1 AND 2 ARCHAEOLOGICAL ASSESSMENT OF FIELDGATE LAND DEVELOPMENTS LIMITED'S PROPERTY

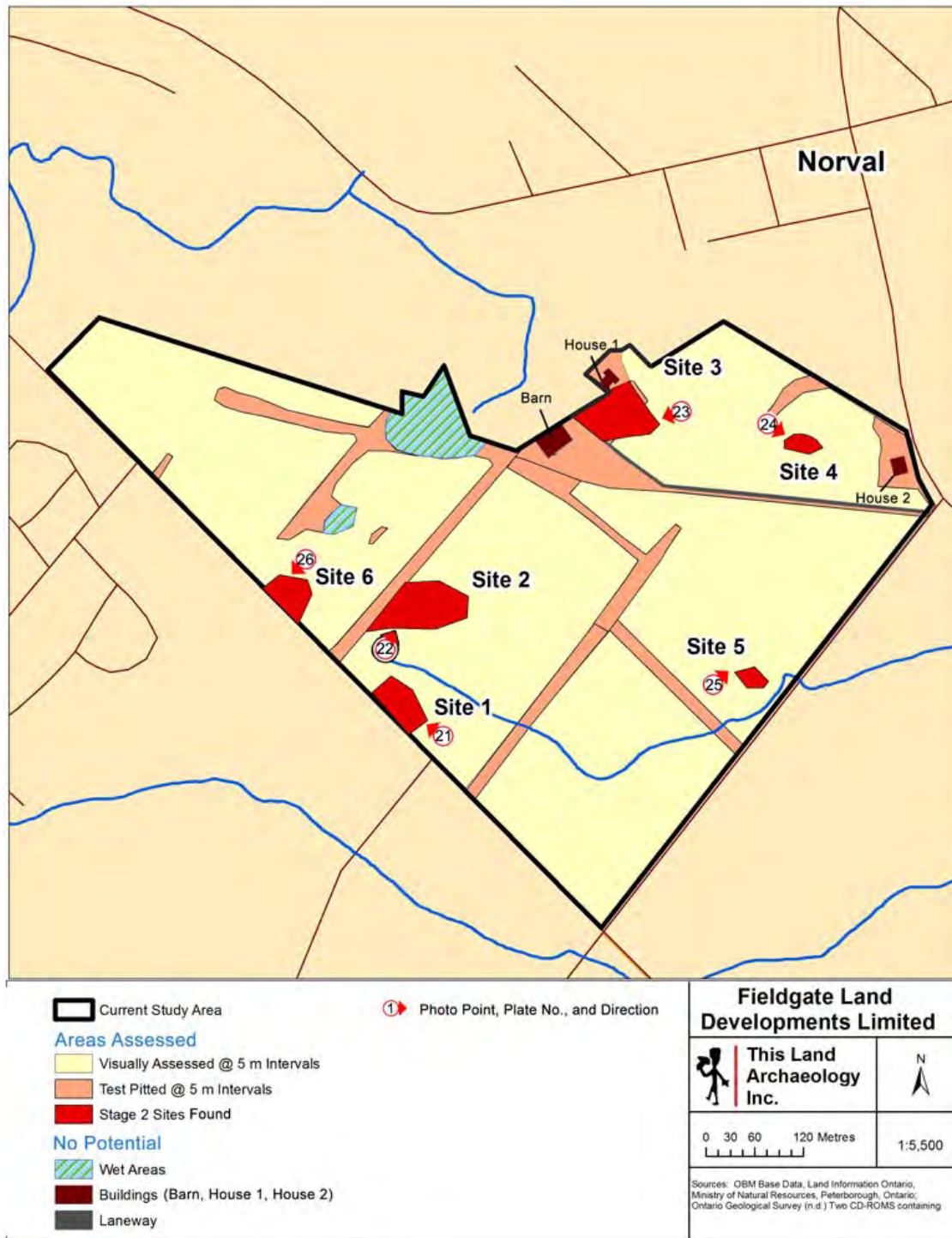


Figure 9: Location and Direction of Some Site Specific Photographs

REPORT ON THE STAGE 1 AND 2 ARCHAEOLOGICAL ASSESSMENT OF FIELDGATE LAND DEVELOPMENTS LIMITED'S PROPERTY

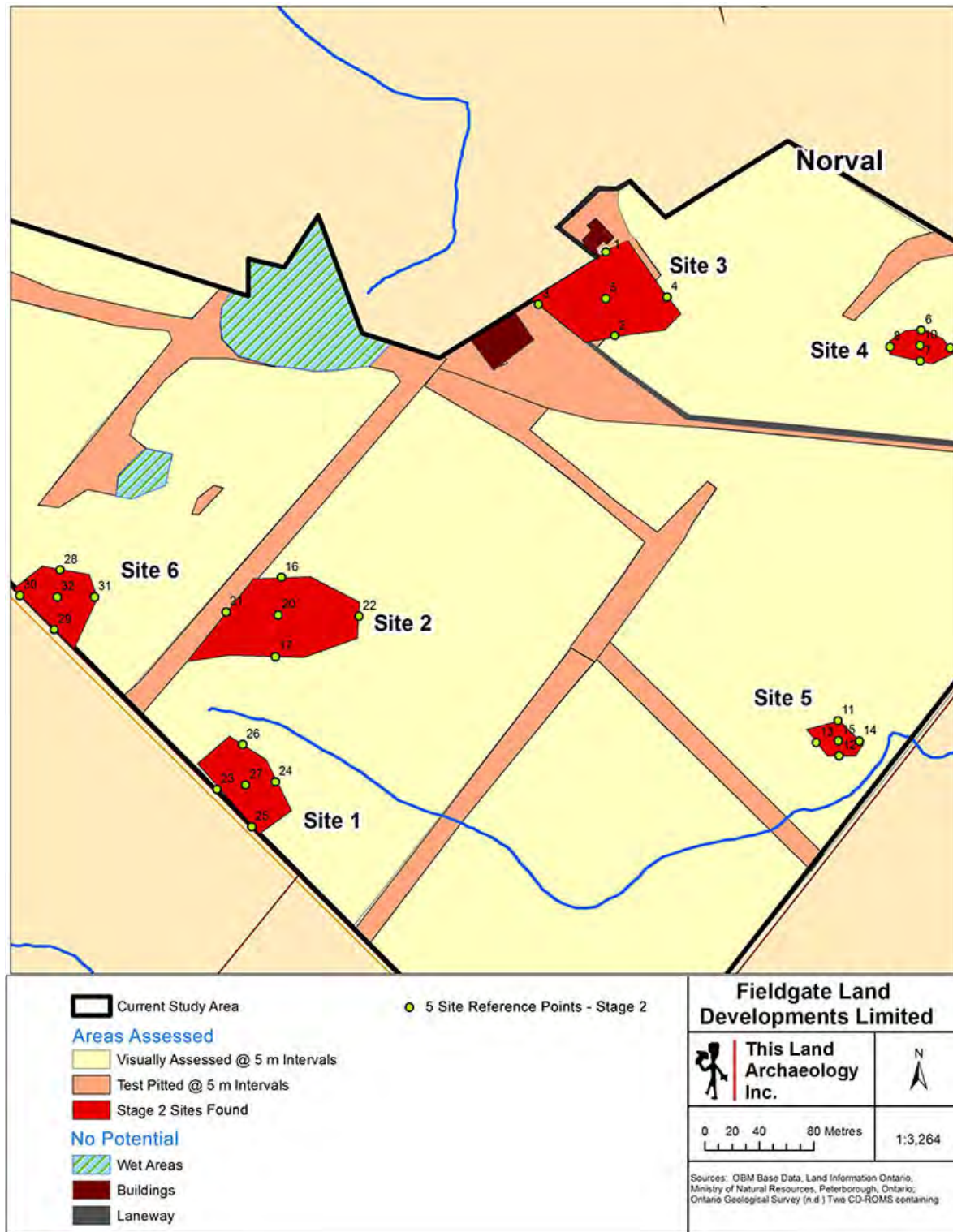


Figure 10: Results of Assessment showing the Site Boundaries and the 5 site reference points for each site

REPORT ON THE STAGE 1 AND 2 ARCHAEOLOGICAL ASSESSMENT OF FIELDGATE LAND DEVELOPMENTS LIMITED'S PROPERTY

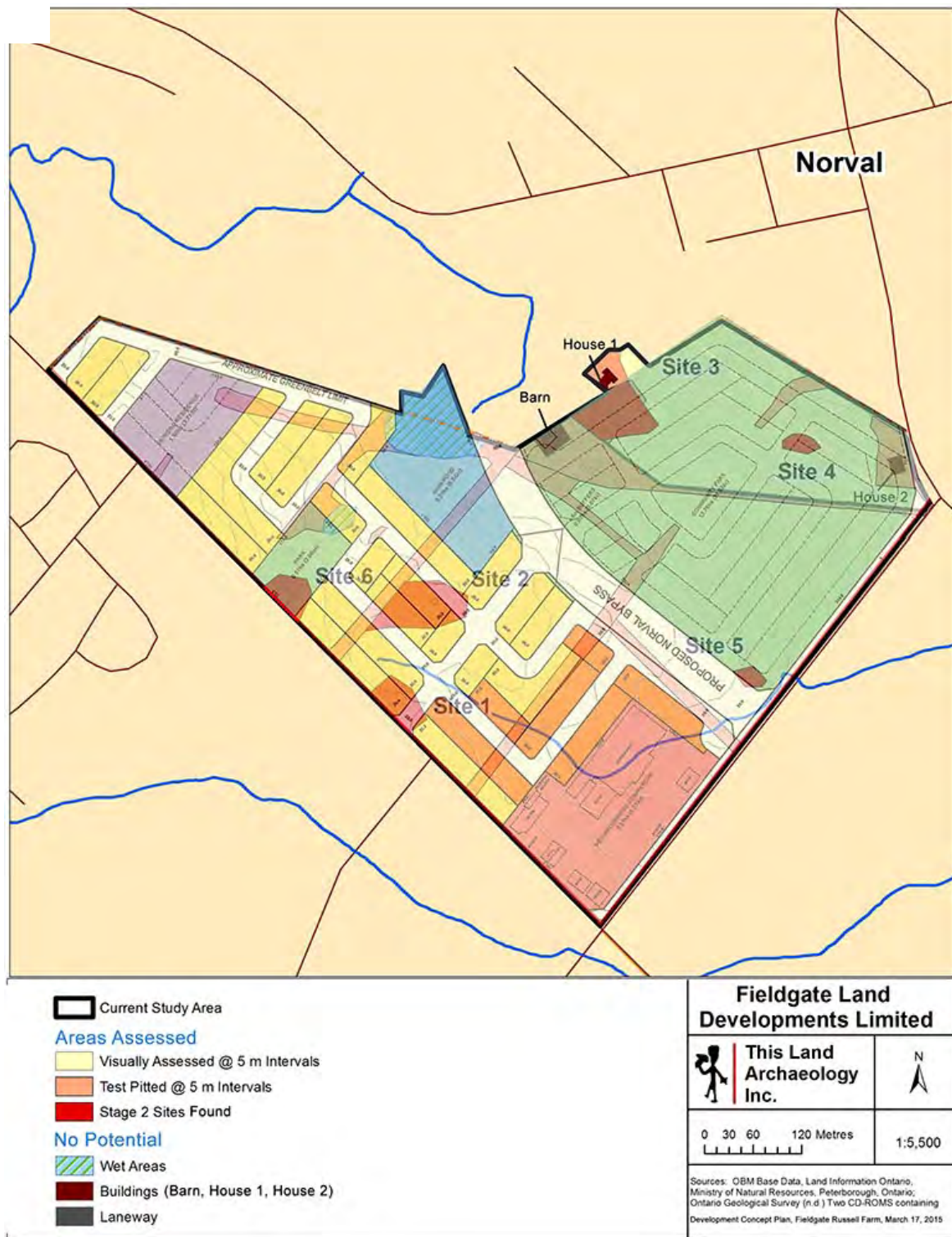


Figure 11: Results of Assessment with Draft Plan Overlaid

Report Type

Original	Interim
Revised	✓ Preliminary

June 22, 2016

**REPORT ON THE STAGE 1 AND 2
ARCHAEOLOGICAL ASSESSMENT OF
FIELDGATE DEVELOPMENTS LAND,
PART OF LOTS 11 AND 12, CONCESSION 11,
TOWN OF HALTON HILLS,
REGIONAL MUNICIPALITY OF HALTON,
HISTORIC HALTON REGION, GEOGRAPHIC TOWNSHIP OF
ESQUESING NORTH, ONTARIO**

Submitted to:
Fieldgate Developments

And to:
The Ministry of Tourism, Culture and Sport

Licensee:
Thomas Irvin, Licence Number P379

PIF #: P379-0015-2015



This Land
Archaeology
Inc.

Executive Summary

This Land Archaeology Inc. (TLA) was contracted by Fieldgate Land Developments Limited to undertake a Stage 1 and 2 Archaeological Assessment on Part of Lots 11 and 12, Concession 11, in the Town of Halton Hills, Regional Municipality of Halton, Ontario. The current study area encompasses 39.23 hectares.

The Stage 1 Study provided background information on the property's geography, history, previous archaeological fieldwork and current land conditions. This background information indicated high Aboriginal and Euro-Canadian archaeological potential. As such, a Stage 2 Archaeological Assessment of the property was required.

The Stage 2 assessment involved both a pedestrian visual survey of agricultural fields that had been prepared, and test pit assessment of land that could not be ploughed.

The Stage 2 visual assessment of agricultural fields resulted in the discovery of six mid to late 19th century Euro-Canadian sites registered and named as follows:

- Norval Site 1 (AjGx-261)
- Norval Site 2 (AjGx-262)
- Norval Site 3 (AjGx-263)
- Norval Site 4 (AjGx-265)
- Norval Site 5 (AjGx-266)
- Norval Site 6 (AjGx-264)

Due to the proximity of a house and lawn adjacent to Norval Site 3, a test pit assessment was conducted of this area. Additional artifacts were recovered, and the Norval Site 3 estimated site extent was increased to include these positive test pit finds.

In addition to the six Euro-Canadian sites found and registered during the test pit and visual assessment, 4 aboriginal, isolated findspots were also discovered.

Since the Stage 2 assessment revealed the presence of six 19th century sites a summary of recommendations are as follows:

- An in-depth Stage 3 archival study will be conducted for Part of Lots 11 and 12, Concession 11, in the Town of Halton Hills given the location of the archaeological sites in adherence with the 2011 Standards and Guidelines: 3.1.
- Archaeological assessment has only been completed on the Developable Lands related to this residential development; should work be planned outside of the defined Study Area (Figure 11) additional archaeological assessment will be required.
- Please note that two archaeological sites exist within proximity to the Study Area (AjGx-80 and AjGx-81), should development be planned outside of the Study Area

**REPORT ON THE STAGE 1 AND 2 ARCHAEOLOGICAL ASSESSMENT
OF FIELDGATE LAND DEVELOPMENTS LIMITED'S PROPERTY**

further archaeological assessment are required and should account for these two sites.

- For Norval Site 1; Norval Site 2; Norval Site 3 and Norval Site 6, due to the quantity and age of artifacts recovered, Stage 3 assessment of these sites is required. Details are provided in the Recommendation section of this report.
- For Norval Sites 4 and Norval Site 5, due to the paucity of artifacts recovered, no further work is required on either of these sites.
- For the four isolated findspots, no further work is recommended as intensification did not reveal any additional finds.

It is requested that the Ministry of Tourism, Culture and Sport enter this report into the Public Register and provide a letter of confirmation.

REPORT ON THE STAGE 1 AND 2 ARCHAEOLOGICAL ASSESSMENT
OF FIELDGATE LAND DEVELOPMENTS LIMITED'S PROPERTY

Project Personnel

Project Manager:	William D. Finlayson (P059)
Project Director:	Thomas Irvin (P379)
Licensee:	Thomas Irvin (P379)
Field Crew:	Sofie Anastasakis James De Martini Brad Baker Bill Gigg John Barr Gary Moore Brad Bidmead Terry Sallows Connor Boswell Karl Schulz Shaun Boswell Matt Waller Alex Capaldi Bob White Logan Churchill Colin Yu Luke Cuppage Megan De Martini
Graphics:	William D. Finlayson Leslie Town
Photographs:	David Finlayson
Historical Research:	Thomas Irvin (P379) Claire Bisset
Report Production:	William D. Finlayson Thomas Irvin Claire Bisset Corey Ramsbottom Janine Stroud Leslie Town

REPORT ON THE STAGE 1 AND 2 ARCHAEOLOGICAL ASSESSMENT OF FIELDGATE LAND DEVELOPMENTS LIMITED'S PROPERTY

Table of Contents

Select [Table of Contents to jump to subject.](#)

Executive Summary.....	i
Project Personnel.....	iii
Table of Contents	iv
1.0 Development Context	1
2.0 Project Context	1
2.1 Project Context: Historical Context.....	1
2.2 Project Context: Archaeological Context	1
Table 1: Known Sites within One km of Project Limits	2
3.0 STAGE 1	3
3.1 Stage 1: Historical Background.....	3
Table 2: Occupation of South-Central Ontario Summary	4
3.2 Stage 1: Analysis and Conclusions	4
3.3 Stage 1: Recommendations	5
4.0 Stage 2.....	5
4.1 Stage 2: Study Area.....	5
4.2 Stage 2: Field Methods.....	5
Table 3: GPS Coordinates – Please See Supplementary Documentation	8
4.3 Stage 2: Record of Finds.....	8
Table 4: Inventory of Stage 2 Records	13
4.4 Stage 2: Analysis and Conclusions	14
Table 5: Summary of Land Assessed.....	15
4.5 Stage 2: Recommendations	16
4.6 Advice on Compliance	17
5.0 Bibliography	18
Figure 1: Location of Study Area	20
Figure 2: 1877 Illustrated Historical Atlas Showing Location of Study Area.....	21
Figure 3: 1942 Department of National Defence Topographic Map	22
Figure 4: Current Land Use of the Study Area	23
Figure 5: Surficial Geology of the Study Area	24
Figure 6: Proposed Stage 2 Archaeological Assessment	25
Figure 7: Location and Direction of Field Photographs	26
Figure 8: Results of Assessment showing the 2 Permanent Reference Points and the Location and Stage 2 Site Boundaries and the Isolated Findspots	27
Figure 9: Location and Direction of Some Site Specific Photographs	28
Figure 10: Results of Assessment showing the Site Boundaries and the 5 site reference points for each site	29
Figure 11: Results of Assessment with Draft Plan Overlay.....	30
Plate 1: Pedestrian Survey (Figure 7).....	31

REPORT ON THE STAGE 1 AND 2 ARCHAEOLOGICAL ASSESSMENT OF FIELDGATE LAND DEVELOPMENTS LIMITED'S PROPERTY

Plate 2: Ground Visibility (Figure 7)	31
Plate 3: Field Conditions (Figure 7)	31
Plate 4: Field Conditions (Figure 7)	31
Plate 5: Field Conditions (Figure 7)	31
Plate 6: Field Conditions (Figure 7)	31
Plate 7: Field Conditions (Figure 7)	32
Plate 8: Field Conditions (Figure 7)	32
Plate 9: Field Conditions (Figure 7)	32
Plate 10: Visibility (Figure 7)	32
Plate 11: Field Conditions (Figure 7)	32
Plate 12: Field Conditions (Figure 7)	32
Plate 13: Test Pitting Tree Line (Figure 7)	33
Plate 14: Extant Barn (Figure 7)	33
Plate 15: Test Pitting Front Lawn of House #1 (Figure 7)	33
Plate 16: House #1 (Figure 7)	33
Plate 17: Test Pitting Front Lawn of House 2 (Figure 7)	34
Plate 18: Test Pit Example (Figure 7)	34
Plate 19: Low Lying Marsh Area (Figure 7)	34
Plate 20: Access Road – Former Railway (Figure 7)	34
Plate 21: Norval Site 1 Stage 2 (Figure 9)	35
Plate 22: Norval Site 2 Stage 2 (Figure 9)	35
Plate 23: Norval Site 3 Stage 2 (Agricultural Field Portion) (Figure 9)	35
Plate 24: Norval Site 4 Stage 2 (Figure 9)	35
Plate 25: Norval Site 5 Stage 2 (Figure 9)	36
Plate 26: Norval Site 6 Stage 2 (Figure 9)	36
Plate 27: Lucy Maud Montgomery's 1926 Map of Norval, Ontario	37
Plate 28: Sample of Artifacts Collected Norval Site 1	38
Plate 29: Sample of Artifacts Collected Norval Site 2	39
Plate 30: Sample of Artifacts Collected Norval Site 3	40
Plate 31: Sample of Artifacts Collected Norval Site 3	41
Plate 32: Sample of Artifacts Collected Norval Site 4	42
Plate 33: Sample of Artifacts Collected Norval Site 5	43
Plate 34: Sample of Artifacts Collected Norval Site 6	44
Plate 35: Sample of Artifacts Collected Norval Site 3 – Isolated Findspots	45
5.1 APPENDICES	46
5.2 Norval Site 1 – Visual Assessment	
Table 6: Summary List of Artifacts	
Table 7: Artifact Catalogue	
5.3 Norval Site 2 – Visual Assessment	
Table 8: Summary List of Artifacts	
Table 9: Artifact Catalogue	

REPORT ON THE STAGE 1 AND 2 ARCHAEOLOGICAL ASSESSMENT OF FIELDGATE LAND DEVELOPMENTS LIMITED'S PROPERTY

5.4 Norval Site 3 – Visual Assessment	
Table 10: Summary List of Artifacts	
Table 11: Artifact Catalogue.....	
5.5 Norval Site 3 – Test Pit Assessment	
Table 12: Summary List of Artifacts	
Table 13: Artifact Catalogue.....	
5.6 Norval Site 4 – Visual Assessment	
Table 14: Summary List of Artifacts	
Table 15: Artifact Catalogue.....	
5.7 Norval Site 5 – Visual Assessment	
Table 16: Summary List of Artifacts	
Table 17: Artifact Catalogue.....	
5.8 Norval Site 6 – Visual Assessment	
Table 18: Summary List of Artifacts	
Table 19: Artifact Catalogue.....	
5.9 Norval Isolated Finds – Visual Assessment	
Table 20: Summary List of Artifacts	
Table 21: Artifact Catalogue.....	

1.0 Development Context

This Land Archaeology Inc. was contracted by Fieldgate Land Developments Limited to conduct a Stage 1 Archaeological Assessment on Part of Lots 11 and 12, Concession 11, in the Town of Halton Hills, Regional Municipality of Halton, Ontario to facilitate a residential development (Figure 1).

A Stage 1 Archaeological Assessment was required as a condition of the Draft Plan Approval by the Town of Halton Hills Planning Department. The development of residential lands is listed under the Planning Act (R.S.O. 1990) and the Ontario Heritage Act (R.S.O. 1990).

2.0 Project Context

2.1 Project Context: Historical Context

The Village of Norval, also known as Norval on the Credit, is located within the historic Township of Esquesing (Figure 2). It was founded in 1820 by members of the McNabb family and was originally named McNabbville (Armstrong 1972). The last survivor of the founding family, Alexander McNabb, had the village name change to Norval. Norval was known in the 19th century as a producer of fine flour as numerous flourmills existed in and around the village (Armstrong 1972). As well, the rolling hills surrounding the village were used for sheep grazing (Ruggle 1973). Norval was a well-established stage coach stop from travelers moving into York and later in the 19th and 20th century was also an established train stop, Norval Station, which was located to the north of the village (Ruggle 1973). It opened in 1856 and was closed in the 1930's (Ruggle 1973). The Toronto-Guelph Radial Line (essentially an electric streetcar) opened in Norval and connected the various flourmills in the village with the city of Toronto. It opened in 1917 and was closed in 1931. This radial line ran through the Study Area and can be seen within the Department of Defense map from 1942 (Figure 3). A 1926 sketch, created by Lucy Maude Montgomery, of the village clearly depicts portions of the Study Area (Plate 27). This sketch indicates the Study Area was mainly agricultural in 1926, and also indicates that a small station stop for the radial line maybe present within the study area. However, there could be a great deal of artistic licence as the map presented is a sketch, as such fine details are considered as an approximation.

Norval is also well known for Lucy Maude Montgomery, the Canadian author who lived in Norval during the 20th century and is said to have penned various Anne of Green Gables stories while a resident.

2.2 Project Context: Archaeological Context

The Study Area is located adjacent to the Grand River, a known travel route for First Nation's peoples. The Study Area itself would have made an ideal location for habitation, travel and resource procurement in both the prehistoric and historic periods. The evidence for First Nation occupation within the general study area is reflected in the known archaeological sites within 1 km of the Study Area.

REPORT ON THE STAGE 1 AND 2 ARCHAEOLOGICAL ASSESSMENT OF FIELDGATE LAND DEVELOPMENTS LIMITED'S PROPERTY

A review of the Ontario Sites Database (OSD) indicates that there are 16 known archaeological sites within 1 km of the Study Area (see Table 1 below). Of these sites there are 10 Pre-Contact, 3 Historic and an additional 3 sites of which details are not available (details of these sites have not been entered into the OSD).

There is a noted lack of registered archaeological sites within the confines of the Study Area. This lack is because the area in question has not been subject to any archaeological assessments previously. However, there are 3 archaeological sites located within Lots 11 or 12 (not within the current Study Area). The Norval 4 Site (site consist of 1 core) (AjGx-80) and the Norval 5 Site (site consists of a single flake) (AjGb-81) are both 25m (approximately) from the edge of the Study Area (as location data provided by Sites Module in PastPort). Another site, AjGx-14 is also located within Lot 12 but no data beyond the Borden number has been provided for this site.

Given the known pre-contact sites within 1km, the nature of the Study Area in relation to the Credit River, it is clear there is elevated potential for the recovery of pre-contact archaeological resources within the Study Area.

The Archaeological Master Plan for the Region of Halton was also consulted for this study. The Master Plan indicated the property held archaeological potential with the entire study area being located within the boundaries of a 'Historical Settlement' (presumably Norval, Ontario).

Table 1: Known Sites within One km of Project Limits

Borden #	Site Name	Site Type	Cultural Affiliation	Lot	Concession
AjGx-182	Curry	Homestead	Post-Contact	-	6 WHS
AjGx-183	Curry Dump	Dump	Post-Contact	12	6 WHS
AjGx-7	Laird	Other Camp/Campsite	Woodland, Early	-	-
AjGx-20	Norval 1	Other Camp/Campsite	Post-Contact	-	-
AjGx-21	Norval 2	Other Camp/Campsite	Archaic	-	-
AjGx-78	Norval 2	Findspot	Archaic, Middle	13	11
AjGx-77	Norval 1	Other Camp/Campsite	Woodland, Middle	13	11
AjGx-14	-	-	-	12	11
AjGx-79	Norval 3	Findspot	Pre-Contact	13	10
AjGx-80	Norval 4	Findspot	Pre-Contact	12	11
AjGx-81	Norval 5	Findspot	Pre-Contact	12	11
AjGx-60	Norval	Other Camp/Campsite	Pre-Contact	12	10
AjGx-61	Silver Creek	Other Camp/Campsite	Pre-Contact	12	10
AjGx-9	-	-	-	10	11
AjGx-11	-	-	-	10	10
AjGx-241	Samuel Currie Site	-	Post-Contact	12	6 WHS

**Please note, site information was not made available by the MTCS until after the 2015 assessment was conducted, sites were found, and submitted and accepted by the MTCS with the names of Norval Site 1, Norval Site 2, Norval Site 3, Norval Site 4, Norval Site 5 and Norval Site 6.*

The topography of the property indicates the land slopes gradually towards the north with a steep decline along the northern boundary of the property (Figure 5). Currently,

the property is primarily made up of agricultural fields with areas of scrub-brush, wet low lying areas and a standing farm home with outbuildings (Figure 4).

The surficial geology of the study area indicates the land is primarily comprised of silt, sand and diamicton (poorly sorted materials) with a small section of Paleozoic bedrock in the north-western corner of the property (Figure 5).

3.0 STAGE 1

3.1 Stage 1: Historical Background

A general summary of the pre-contact and post-contact settlement of South Central Ontario is presented below in Table 2.

The Study Area in question is located in portions of Lots 11 and 12 within Concession 11. Little is known about these specific lots; however a review of historical documents indicates the following;

1. The 1848 Journal of the House of Assembly of Upper Canada states that a road was ordered constructed in 1836 through a portion of Lot 11 and 12 in Concession 11. It is unknown if this was to be a dirt road or a plank road (Ontario Parliament 1848).
2. An 1839 edition of the Georgetown Herald included an advertisement for a livestock auction within Lot 12 Concession 11 by Mr. S.J. Lyons Auctioneer. It is unknown if this was the auctioneers place of business, but it is more likely that this area was an active farm and the owner was having the auction take place at his farm (Georgetown Herald 1839).
3. A review of historic mapping (Walker & Miles 1877 Illustrated Historical Atlas of Halton County, Figure 2) indicates that the Study Area was fully within the established limits of Norval Village. The historic atlas map clearly indicates various roads and a potential town square which suggests that the area may have been densely developed. However, no evidence of this development can be seen within the aerial images or other historic records. It is possible that the area in question was not densely developed as indicated and that the historic map is indicating a planned Norval expansion which never took place.

Given the historic occupation of Norval, the location of the study area to the existing village and the historic maps, it is clear that there is elevated potential for historic archaeological resources within the Study Area.

The Project and Field Director consulted the 1877 Illustrated Historical Atlas for the County of Halton (Figure 2); the historical findings and all information provided from the Ministry of Tourism, Culture and Sport regarding previous archaeological fieldwork prior to initiating field activities.

**REPORT ON THE STAGE 1 AND 2 ARCHAEOLOGICAL ASSESSMENT
OF FIELDGATE LAND DEVELOPMENTS LIMITED'S PROPERTY**

Table 2: Occupation of South-Central Ontario Summary

Date	Period	Sub-Period	Culture	Peoples	Diagnostic Traits/Actions
Present A.D. 1780	Historic		Euro-Canadian Algonquian	Europeans Mississaugas	Euro-Canadian Settlement of the land Tribal Displacements and Re-locations
A.D. 1650 A.D. 1400 A.D. 1300 A.D. 800	Terminal Woodland	Late	Ontario Iroquoians	Historic Neutral Prehistoric Neutral	Dispersal by Five Nations Iroquoians Introduction of European trade goods Village planning for defense Tribal Differentiation and warfare Large palisaded villages common
		Middle		Middleport Uren	Elaboration of smoking pipes Introduction of beans Expansion into SW Ontario
		Early		Glen Meyer	Conquest of Glen Meyer peoples by Pickering Peoples from SE Ontario Settled village life
A.D. 800 A.D. 0 1000 B.C.			Princess Point Saugeen Meadowood		Incipient horticulture Trade with Hopwellian peoples in Ohio Introduction of Bow and Arrow Introduction of Pottery
	Archaic	Late Middle Early			Mortuary ceremonialism Long distance trade Ground stone and copper tools Hunters and gathers Introduction of spear thrower
8000 B.C. 8900 B.C.	Paleo-Indian	Late Early			Big game hunters Occupation of tundra environment Glaciers retreat

3.2 Stage 1: Analysis and Conclusions

A study area with high archaeological potential requires assessment, whereas one with low potential does not. A number of factors are employed in determining a property's archaeological potential, which includes both Euro-Canadian and Aboriginal potential. Criteria include physiographic variables such as a property's distance from a water source, as well as geographic characteristics such as distinct topographic features and soils which may also indicate archaeological potential. Also considered in determining archaeological potential is the presence of known archaeological sites within or in the vicinity of the study area. Since water sources have remained relatively stable in Southern Ontario since the post-glacial period, proximity to water is regarded as a useful index for the evaluation of archaeological site potential for both the Aboriginal and Euro-Canadian periods of occupation. Furthermore, areas of early Euro-Canadian settlement and proximity to historic transportation corridors such as roads and railways also affect a property's historic archaeological potential.

REPORT ON THE STAGE 1 AND 2 ARCHAEOLOGICAL ASSESSMENT OF FIELDGATE LAND DEVELOPMENTS LIMITED'S PROPERTY

According to the background information sources consulted, the following characteristics indicate high Aboriginal and Euro-Canadian archaeological potential for the property:

- Early historical transportation routes close to the property (Guelph Line; 10 Sideroad and Winston Churchill Boulevard);
- Proximity to the Credit River;
- Sixteen known archaeological sites within 1km of the study area, including 3 sites located on Lots 11 and 12, Concession 11;
- The study area is located within a historic settlement area as per the 1877 Illustrated Historical Atlas Map for the County of Halton and the Archaeological Master Plan of Halton Region.

3.3 Stage 1: Recommendations

Given the archaeological potential indicators, a Stage 2 Archaeological Assessment of the property is required on all 39.23 hectares of the property (Figure 6) in accordance with the *2011 Standards and Guidelines* for Consultant Archaeologists. This includes:

- Visual pedestrian survey of cultivated land that can be moldboard ploughed, disked and weather by rain, with crew walking at 5 meter intervals.
- Test pit survey in areas where a pedestrian survey cannot be undertaken. This involves systematically excavating test pits, 30 cm in diameter, by hand at 5 meters intervals if they are within 300 meters from areas of archaeological potential, screening the soil through a 6 mm mesh to recover artifacts and examining the profiles of the test pit for stratigraphical analysis. Test pits are dug 5 cm into subsoil and are then backfilled.
- Land that does not possess archaeological potential will be photographed and mapped and shown on the results of assessment.

4.0 Stage 2

4.1 Stage 2: Study Area

The Stage 2 fieldwork documented in this report represents 39.23 hectares as recommended at the conclusion of Stage 1.

4.2 Stage 2: Field Methods

Fieldwork for this report was conducted on May 19, 21, 27 and June 1 and 4, 2015 under a mixture of sun and cloud with cool to hot temperatures. Lighting conditions on days permitted excellent visibility for the identification of land features, artifacts and cultural features (Plates 1 to 26)

Areas of the property that were assessed as disturbed or low lying and wet with no potential totaled 0.85 hectares and included low lying and wet areas (0.55 hectares; 1.4% of the property, Plate 19) buildings (0.10 hectares; 1.4% of the property, Plates 14 and 16); and laneways (0.20 hectares; 0.5% of the property, Plates 16, 17 and 20).

Fieldwork involved both the visual assessment of agricultural fields and a test pit assessment of areas that could not be ploughed and visually assessed.

Approximately 33.02 hectares (84.2%) of cultivated land was assessment by means of a pedestrian visual assessment on May 19, 21 and 27, 2015. In accordance with the 2011 Standards and Guidelines for Consultant Archaeologists: Section 2.1.1 the cultivated field had been previously custom moldboard ploughed, disked and weathered by one heavy rain (Plate 1; with overall conditions in Plates 2 to 26).

The land was assessed with crew members walking at 5 m (linear transect) intervals for the entire 33.02 hectares of the property.

Pedestrian survey was conducted at 5m transects over recently ploughed and weathered agricultural lands. One of the fields was found to be in early soy crop (Plate 1). However, when conducting pedestrian survey visual coverage was above 80% (see Plate 2) and the small crop growth did not impede visibility. However, given the high potential of this area, the field found in early soy crop was subject to a 3m transect survey to fully ensure coverage (as per S&G's 2.1.1 Guideline 2). When an artifact was encountered, survey transects were reduced to 1m intervals over a minimum 20m radius around the artifact to determine if it represented an archaeological site or, an isolated find. If the artifact represented an isolated find it was collected and its location recorded using a Differential Global Positioning (D-GPS) handheld unit. If the find was part of a larger archaeological site, the limits of the site were determined and 5 GPS reference points were collected on the sites inferred central point and cardinal directions. Stage 2 sampling strategies for specific sites found are presented below:

During the visual assessment, six scatters of artifacts were found as follows:

- Norval Site 1 (AjGx-261): This is approximately 1,087 square meters in size; a sample of the identified refined ceramic sherds was collected. All formal artifact types and diagnostic categories were collected.
- Norval Site 2 (AjGx-262): This is approximately 1,503 square meters; a sample of the identified refined ceramic sherds was collected. All formal artifact types and diagnostic categories were collected.
- Norval Site 3 (AjGx-263): This is approximately 4,497 square meters; a sample of the identified refined ceramic sherds was collected. All formal artifact types and diagnostic categories were collected. This site is partially located within an agricultural field as well as within a manicured lawn around extant House 1. It should be noted that test pitting was conducted outside the limits of the study area (the study area limit ran through a portion of the lawn) to ensure that the extent of the site within the test pitted lawn was determined.

REPORT ON THE STAGE 1 AND 2 ARCHAEOLOGICAL ASSESSMENT OF FIELDGATE LAND DEVELOPMENTS LIMITED'S PROPERTY

- Norval Site 4 (AjGx-265): This site is approximately 800 square meters historic scatter and produced less than 20 artifacts. All artifacts were collected from this site in order to fully document it.
- Norval Site 5 (AjGx-266): This site was a historic scatter approximately 800 square meters in size and produced less than 20 artifacts. All artifacts were collected from this site in order to fully document it.
- Norval Site 6 (AjGx-264): This is approximately 2,454 square meters in size; a sample of the identified refined ceramic sherds was collected. All formal artifact types and diagnostic categories were collected.

Please note, that a sample of the refined ceramic sherds was collected during the Stage 2. The S&G's requires that all refined ceramic sherds be collected as per S&G's 2.1.1 Standard 8. However, given the surface extent of the sites, compounded with the fact it was evident Stage 3 was required (and such work would be conducted by the licensee within a few weeks) only a sample of refined ceramics was taken and the rest collected during the subsequent Stage 3 CSP. However, all artifacts from Norval Site 4 and Norval Site 5 were collected.

Upon the initial discovery of each site a surface collection was carried out during which the field director struck a balance between gathering enough artifacts to document the archaeological site and leaving enough in place to relocate the site. This resulted in a collection of artifacts from each site as follows:

- Norval Site 1 (AjGx-261); 116 artifacts
- Norval Site 2 (AjGx-262); 42 artifacts
- Norval Site 3 (AjGx-263); 47 artifacts
- Norval Site 4 (AjGx-265); 15 artifacts
- Norval Site 5 (AjGx-266); 18 artifacts
- Norval Site 6 (AjGx-264); 106 artifacts

Test pitting was required on portions of the property where ploughing was not possible, specifically, in forested areas, scrub brush and around lawns and gardens. These areas totaled 5.36 hectares. Test pit assessment was conducted May 27, June 1 and 4, 2015. Test pitting was conducted in accordance with the 2011 Standards and Guidelines, Section 2.1.2.

Test pits were excavated at 5 m intervals in linear transects 5 m apart (Plates 13, 15 and 17). Each test pit was 30 cm in diameter and was excavated by hand 5 cm into subsoil. All of the excavated soil was screened through a 6mm mesh to facilitate the recovery of artifacts before backfilling. The soil was damp but not wet which allowed examination of the profiles for evidence of stratigraphy, disturbance or other unusual features. Test pitting was carried out to within 1 m of built structures (both intact and ruins), or until test pits showed evidence of recent ground disturbance.

The employed methodology was such that all artifacts were collected according to their associated test pit. In accordance with the 2011 Standards and Guidelines Section 5, and Section 2.1.1 (5); all field activities were mapped using the Trimble Geo 7x D-GPS and are accurate to approximately 10 cm.

During the test pit assessment, 76 artifacts were recovered from an area of lawn around an extant historic home (House 1) adjacent to Norval Site 3 (AjGx-263) that was found during the visual assessment in an agricultural field. When artifacts were found, test pit intensification at 2.5 meter intervals was initiated within a radius of 5 meters around the positive test pit. Not all test pits were subject to intensification as it was clear that the site would warrant Stage 3 assessment. This investigation revealed that the artifacts found were part of Norval Site 3 (AjGx-263) and the site extended across part of the agricultural field and into the area of lawn*.

**Note: in order to follow and delineate the extent of the Norval Site 3, test pit excavation continued outside of the area to be developed at this time; but property owned by the proponent. The proponent approved this additional test pit excavation only to the extent that we determine the site boundary for the Norval Site 3.*

All artifacts were collected according to their associated test pit. In accordance with the 2011 Standards and Guidelines Section 5, and Section 2.1.1 (5); all field activities were mapped using the Trimble Geo 7x D-GPS and are accurate to approximately 10 cm.

At the southern extent of the property another extant home was present (appearing to date from the mid-20th century). Test pitting was conducted around this house but due to a technical issue with the field camera the photo of this home cannot be presented; however please see Plate 17 which depicts testing around this home).

Two staked corners of the property were recorded using a Trimble Geo 7x D-GPS (accurate to approximately 10 cm) within UTM grid zone 17, with a NAD 83 datum and no correction method. Point 1 is the north-east corner of the property; Point 2 is the south-east corner of the property and 5 Site Reference Points for each site are shown on Figure 10.

Results of assessment showing draft plan overlay is presented in Figure 11.

GPS coordinates have been included in the Supplementary Documentation for confidentiality purposes.

Table 3: GPS Coordinates – Please See Supplementary Documentation

4.3 Stage 2: Record of Finds

The Stage 2 visual assessment revealed the presence of six mid to late 19th century Euro-Canadian sites as follows:

- Norval Site 1 (AjGx-261)
- Norval Site 2 (AjGx-262)
- Norval Site 3 (AjGx-263)*
- Norval Site 4 (AjGx-265)
- Norval Site 5 (AjGx-266)
- Norval Site 6 (AjGx-264)

No other artifacts or sites were found during the test pit assessment.

The record of finds for each site has been summarized below:

Norval Site 1 (AjGx-261): The Stage 2 visual survey artifact assemblage is as follows:

- A total of 116 artifacts were recovered in total from Norval Site 1 (AjGx-261). Ceramics represented the most common finding at 85.34% of the total artifact assemblage (n=100) of which 71.55% were Vitrified White Earthenware pieces (n=83). The balance of the ceramic assemblage was comprised of Coarse Red Earthenware at 12.07% (n=14); Burnt Ceramics at 0.86% (n=1) and Buff Stoneware at 0.86% (n=1).
- The balance of the overall artifact assemblage from Norval Site 1 (AjGx-261) was comprised of Bottle Glass pieces at 6.03% (n=7); Pipe Stem pieces at 4.31% (n=5); Pipe Bowl pieces at 2.59% (n=3); and Thick Window Glass at 0.86% (n=1).

Given the ceramic assemblage, Norval Site 1 (AjGx-261) is interpreted to represent a mid to late 19th century Euro-Canadian site. A sample of artifact found during the Stage 2 visual assessment is shown on Plate 28.

For Norval Site 1 (AjGx-261), Figure 10 illustrates the extent of the site as determined during the Stage 2 assessment including the 5 site reference points.

Artifacts from the Stage 2 Visual Assessment of the Norval Site 1 (AjGx-261) are presented as follows:

- Table 6: Artifact Summary
- Table 7: Artifact Catalogue

Norval Site 2 (AjGx-262): The Stage 2 visual survey artifact assemblage is as follows:

- A total of 42 artifacts were recovered in total from Norval Site 2 (AjGx-262). Ceramics represented the most common finding at 71.43% of the total artifacts assemblage (n=30) of which 64.29% were Vitrified White Earthenware pieces (n=27). The balance of the ceramic assemblage was comprised of Buff Stoneware at 2.38% (n=1); Coarse Red Earthenware at 2.38% (n=1); and Porcelain at 2.38% (n=1).
- The balance of the overall artifact assemblage from Norval Site 2 (AjGx-262) was comprised of Bottle Glass at 16.67% (n=7); Machine Cut Nails at 2.38% (n=1); Mortar at 2.38% (n=1); Thick Window Glass at 2.38% (n=1); Pipe Bowl at 2.38% (n=1) and Pipe Stem at 2.38% (n=1).

Given the ceramic assemblage, Norval Site 2 (AjGx-262) is interpreted to represent a mid to late 19th century Euro-Canadian site. A sample of artifact found during the Stage 2 visual assessment is shown on Plates 29.

For Norval Site 2 (AjGx-262), Figure 10 illustrates the extent of the site as determined during the Stage 2 assessment including the 5 site reference points.

Artifacts from the Stage 2 Visual Assessment of the Norval Site 2 (AjGx-262) are presented as follows:

- Table 8: Artifact Summary
- Table 9: Artifact Catalogue

Norval Site 3 (AjGx-263): The artifact assemblage from both the visual survey and subsequent test pit assessment on the adjacent lawn is as follows:

- From the visual survey:
 - A total of 47 artifacts were recovered. Ceramics represented the most common finding at 74.47% of the total artifact assemblage (n=35) of which 70.21% were Vitrified White Earthenware pieces (n=33). The balance of the ceramic assemblage was comprised of Coarse Red Earthenware at 2.13% (n=1) and Buff Stoneware at 2.13% (n=1).
 - The balance of the overall artifact assemblage was comprised of Architectural Class artifacts at 2.13% (n=1) and Glass artifacts at 23.41% (n=11).
- From the test pit assessment:
 - A total of 76 artifacts were recovered. Architectural class artifacts represented the most common finding at 39.47% of the total artifact assemblage (n=30) of which 18.42% were Machine Cut Nails (n=14). The balance of the architectural class was comprised of Common Nails at 11.84% (n=9); Mortar at 3.95% (n=3); Common Spike at 2.63% (n=2) and Thick Window Glass at 2.63% (n=2).
 - The balance of the overall artifact assemblage was comprised of Ceramics at 31.58% (n=24); 'Other' class artifacts at 18.43% (n=14); Glass artifacts at 10.53% (n=5) and Faunal at 3.95% (n=3).

Given the ceramic assemblage, Norval Site 3 (AjGx-263) is interpreted to represent a mid to late 19th century Euro-Canadian site. A sample of artifact found during the Stage 2 visual assessment is shown on Plate 30 and 31.

For Norval Site 3 (AjGx-263) Figure 10 illustrates the extent of the site as determined during the Stage 2 assessment including the 5 site reference points.

Artifacts from the Stage 2 Visual Assessment of the Norval Site 3 (AjGx-263) are presented as follows:

- Table 10: Artifact Summary
- Table 11: Artifact Catalogue

Artifacts from the Stage 2 Test Pit Assessment of the Norval Site 3 (AjGx-263) are presented as follows:

- Table 12: Artifact Summary
- Table 13: Artifact Catalogue

Norval Site 4 (AjGx-265): The Stage 2 visual survey artifact assemblage is as follows:

- A total of 15 artifacts were recovered in total from Norval Site 4 (AjGx-265). Ceramics represented the most common finding at 93.34% of the total artifact assemblage (n=14) of which 60% were Pearlware pieces (n=9). The balance of the ceramic assemblage was comprised of Refined White Earthenware at 26.67% (n=4) and Vitrified White Earthenware at 6.67% (n=1).
- The balance of the overall artifact assemblage for Norval Site 4 (AjGx-265) was comprised of pipe bowl at 6.67% (n=1).
- Given the paucity of artifacts at Norval Site 4, all artifacts were collected during the Stage 2 assessment to fully document the site as it was clear it would not be recommended for further assessment. .

The ceramic assemblage from Norval Site 4 (AjGx-265) is interpreted to represent an early to late 19th century Euro-Canadian site. Given the small number of artifacts found, this site is likely a single discard event. A sample of artifact found during the Stage 2 visual assessment is shown on Plate 32.

For Norval Site 4 (AjGx-265), Figure 10 illustrates the extent of the site as determined during the Stage 2 assessment including the 5 site reference points.

Artifacts from the Stage 2 Visual Assessment of the Norval Site 4 (AjGx-265) are presented as follows:

- Table 14: Artifact Summary
- Table 15: Artifact Catalogue

Norval Site 5 (AjGx-266): The Stage 2 visual survey artifact assemblage is as follows:

- A total of 18 artifacts were recovered in total from Norval Site 5 (AjGx-266). Ceramics represented the most common finding at 83.33% of the total artifact assemblage (n=15) all of which were Vitrified White Earthenware pieces.

- The balance of the overall artifact assemblage for Norval Site 5 (AjGx-266) was comprised of Bottle Glass at 11.11% (n=2) and Pipe Bowl at 5.56% (n=1).
- Given the paucity of artifacts at Norval Site 5, all artifacts were collected during the Stage 2 assessment.

The ceramic assemblage from the Norval Site 5 (AjGx-266) is interpreted to represent a mid to late 19th century Euro-Canadian site. Given the small number of artifacts found, this site is likely a single discard event. A sample of artifact found during the Stage 2 visual assessment is shown on Plate 33.

For Norval Site 5 (AjGx-266), Figure 10 illustrates the extent of the site as determined during the Stage 2 assessment including the 5 site reference points.

Artifacts from the Stage 2 Visual Assessment of the Norval Site 5 (AjGx-266) are presented as follows:

- Table 16: Artifact Summary
- Table 17: Artifact Catalogue

Norval Site 6 (AjGx-264): The Stage 2 Visual survey, artifact assemblage is as follows:

- A total of 106 artifacts were recovered in total from Norval Site 6 (AjGx-264). Ceramics represented the most common finding at 73.6% of the total artifact assemblage (n=78) of which 62.3% of the assemblage were Vitrified White Earthenware pieces (n=66). The balance of the ceramic assemblage was comprised of Coarse Red Earthenware at 10.4 (n=11) and Pearlware at 0.94% (n=1).
- The balance of the overall artifact assemblage for Norval Site 6 (AjGx-264) was comprised of Glass (Bottle Glass) artifacts at 8.5% (n=9); 'Other' class artifacts represented 7.5% of the overall assemblage with (Miscellaneous (n=1), pipe bowl (n=1) and pipe stems (n=6). Faunal artifacts at 5.7% (n=6); Architectural class artifacts (thick window glass) were slight and represented only 4.7% of the total assemblage (n=5).

The artifact assemblage of Norval Site 6 (AjGx-264) is interpreted to be a Euro-Canadian site. Ceramics date the period of occupation to the mid-19th century.

A sample of artifacts found at the Norval Site 6 during the Stage 2 visual assessment is presented on Plate 34.

For Norval Site 6 (AjGx-264), Figure 10 illustrates the extent of the site as determined during the Stage 2 assessment including the 5 site reference points.

Artifacts from the Stage 2 Visual Assessment of the Norval Site 6 (AjGx-264) are presented as follows:

REPORT ON THE STAGE 1 AND 2 ARCHAEOLOGICAL ASSESSMENT OF FIELDGATE LAND DEVELOPMENTS LIMITED'S PROPERTY

- Table 18: Artifact Summary
- Table 19: Artifact Catalogue

In addition to the six Euro-Canadian sites found and registered, 4 isolated findspots were also discovered during the Stage 2 visual assessment. The location of each is illustrated on Figure 10.

Findspot 1: An Onondaga Secondary Flake.

Findspot 2: An Onondaga Secondary Flake which exhibited evidence of thermal alternation.

Findspots 1 and 2 were found approximately 25 m apart. Given that they may have indicated a pre-contact site an intensified transect survey walked at 1m intervals was conducted in a radius of 20m around both find spots. This was done one two separate dates, one on the initial day of discovery and again on the next day in the field as heavy rains had occurred. Despite both intensified surveys no additional artifacts were found and Findspots 1 and 2 are being treated as individual findspots and not a site.

Findspot 3: An Onondaga Secondary Flake which exhibited a hinge fracture.

Findspot 4: An Onondaga Secondary Flake.

Plate 35 is a photograph of these isolated finds.

- Table 20: Artifact Summary
- Table 21: Artifact Catalogue

Table 4 below is an inventory of the documentary record that was generated in the field for Stage 2:

Table 4: Inventory of Stage 2 Records

- Field notes, drawings and paper records are stored in a file on the Stage 2 Archaeological Assessment of Fieldgate Land Developments Limited's Land, located on part of Lots 11 and 12, Concession 11 in the Town of Halton Hills, Ontario;
- Digital pictures are stored on TLA computers and on external back-up media;
- Computer files (Word, Excel, Photoshop, ArcGIS, GPS Pathfinder, Office and Microsoft Access) stored on TLA computers and on external backup media.

The artifacts from the 2015 Stage 2 assessment are bagged separately by site and pack into one box measuring 30.5 cm x 30.5 cm x 45.75 cm and labelled "Stage 2

Assessment of Fieldgate Land Developments Limited, Located on Part of Lots 11 and 12, Concession 11 in the Town of Halton Hills, Ontario."

Artifacts will be held in trust for the People of Ontario by This Land Archaeology Inc. at its headquarters in Moonstone, Ontario.

It should be noted that while the historical documentation and aerial photos of the property indicate the presence of an early 20th century radial railway line; no archaeological evidence was found. It is likely that the farm access road has been constructed atop it and portions have been robbed out, this compounded with decades of ploughing appear to have removed any tangible evidence.

4.4 Stage 2: Analysis and Conclusions

A summary of land and method of assessment are presented below in Table 5.

To summarize, a total of 33.02 hectares (84.2% of the property) was visually assessed at 5 meter intervals and 5.36 hectares (13.7% of the property) was test pitted at 5 m intervals. A total of 0.85 hectares were assessed as disturbed. This included low lying and wet areas (0.55 hectares; 1.4%); buildings (0.10 hectares; 0.3%); and laneways (0.20 hectares; 0.5%).

The analysis and conclusions for each site are as follows:

Norval Site 1 (AjGx-261):

- The predominance of Vitriified White Earthenware suggest it represents a mid to late 19th century site. In accordance with the Ministry of Tourism, Culture and Sport Standards and Guidelines for Consultant Archaeologists Section 2.2; Standard 1c, as Norval Site 1 (AjGx-261) contains more than 20 artifacts that date to before 1900, it is interpreted to hold further cultural heritage value and interest.

Norval Site 2 (AjGx-262):

- The predominance of Vitriified White Earthenware suggest it represents a mid to late 19th century site. In accordance with the Ministry of Tourism, Culture and Sport Standards and Guidelines for Consultant Archaeologists Section 2.2; Standard 1c, as Norval Site 2 (AjGx-262) contains more than 20 artifacts that date to before 1900, it is interpreted to hold further cultural heritage value and interest.

Norval Site 3 (AjGx-263):

- The predominance of Vitriified White Earthenware suggest it represents a mid to late 19th century site. In accordance with the Ministry of Tourism, Culture and Sport Standards and Guidelines for Consultant Archaeologists Section 2.2; Standard 1c, as Norval Site 3 (AjGx-263) contains more than 20 artifacts that date to before 1900, it is interpreted to hold further cultural heritage value and interest.

**REPORT ON THE STAGE 1 AND 2 ARCHAEOLOGICAL ASSESSMENT
OF FIELDGATE LAND DEVELOPMENTS LIMITED'S PROPERTY**

Norval Site 4 (AjGx-265):

- Although both Pearlware and Refined White Earthenware were present in this artifact assemblage, the low numbers of artifacts (15 in total) in tandem with a lack of architectural pieces indicate these findings do not represent an early Euro-Canadian occupation. As such, it is the conclusion that Norval Site 4 (AjGx-265) does not hold further cultural heritage value or interest.

Norval Site 5 (AjGx-266):

- Although Vitrified White Earthenware pieces were present in this artifact assemblage, the low numbers of artifacts (18 in total) in tandem with a lack of architectural pieces indicate these findings do not represent an early Euro-Canadian occupation. As such, it is the conclusion that Norval Site 5 (AjGx-266) does not hold further cultural heritage value or interest.

Norval Site 6 (AjGx-264):

- The predominance of Vitrified White Earthenware suggest it represents a mid to late 19th century site. In accordance with the Ministry of Tourism, Culture and Sport Standards and Guidelines for Consultant Archaeologists Section 2.2; Standard 1c, as Norval Site 6 (AjGx-264) contains more than 20 artifacts that date to before 1900, it is interpreted to hold further cultural heritage value and interest.

Findspots 1 - 4

- Are likely related to resource procurement activities within the Study Area by pre-contact peoples. Given the nature of the findspots no further conclusions can be drawn from them.

The approximate dating of the Norval Sites is supported primarily through an analysis of the ceramics found.

A summary of land assessed is shown below in Table 5:

Table 5: Summary of Land Assessed

Fieldgate Land Developments Limited Part of Lots 11 and 12, Concession 11, Town of Halton Hills		
Assessment Method	Hectares	% of Total Land
Visual Assessment @ 5 m Intervals	33.02	84.2%
Test Pitted @ 5 m Intervals	5.36	13.7%
<i>Subtotal of Areas Assessed</i>	38.38	97.8%
Areas Assessed as Disturbed		
Low Lying and Wet Areas	0.55	1.4%
Buildings	0.10	0.3%
Laneways	0.20	0.5%
<i>Subtotal of Areas Assessed as Disturbed</i>	0.85	2.2%
Total	39.23	100%

4.5 Stage 2: Recommendations

Since the Stage 2 assessment revealed the presence of four 19th century sites which hold Cultural Heritage Value and Interest recommendations are as follows:

- An in-depth Stage 3 archival study will be conducted for Part of Lots 11 and 12, Concession 11, in the Town of Halton Hills given the location of the archaeological sites in adherence with the 2011 Standards and Guidelines: 3.1.
- Archaeological assessment has only been completed on the Developable Lands related to this residential development; should work be planned outside of the defined Study Area (Figure 11) additional archaeological assessment will be required.
- Please note that two archaeological sites exist within proximity to the Study Area (AjGx-80 and AjGx-81), should development be planned outside of the Study Area further archaeological assessment are required and should account for these two sites.

Norval Site 1 (AjGx-261):

- A Stage 3 site specific assessment is recommended. This will involve both a Controlled Surface Pick-up and Unit Excavation. The strategy for the Stage 3 test archaeological assessment will involve excavating a 10m grid across the site limits with exploratory infill units of 40%.

Norval Site 2 (AjGx-262):

- A Stage 3 site specific assessment is recommended. This will involve both a Controlled Surface Pick-up and Unit Excavation. The strategy for the Stage 3 test archaeological assessment will involve excavating a 10m grid across the site limits with exploratory infill units of 40%.

Norval Site 3 (AjGx-263):

- A Stage 3 site specific assessment is recommended. This will involve both a Controlled Surface Pick-up and Unit Excavation. The strategy for the Stage 3 test archaeological assessment will involve excavating a 10m grid across the site limits with exploratory infill units of 40%.

Norval Site 4 (AjGx-265):

- Due to the low number of artifacts found, Norval Site 4 (AjGx-265) has been sufficiently documented through the Stage 2 assessment and holds no further cultural heritage value or interest.
- No further archaeological assessments are required for this site.

Norval Site 5 (AjGx-266):

- Due to the low number of artifacts found, Norval Site 5 (AjGx-266) has been sufficiently documented through the Stage 2 assessment and holds no further cultural heritage value or interest.
- No further archaeological assessments are required for this site.

Norval Site 6 (AjGx-264):

- A Stage 3 site specific assessment is recommended. This will involve both a Controlled Surface Pick-up and Unit Excavation. The strategy for the Stage 3 test archaeological assessment will involve excavating a 10m grid across the site limits with exploratory infill units of 40%.

The four isolated findspots:

- No further work is recommended as intensification did not reveal any additional finds.

4.6 Advice on Compliance

This report is submitted to the Minister of Tourism, Culture and Sport as a condition of licensing in accordance with Part VI of the Ontario Heritage Act, R.S.O. 1990, c 0.18. The report is reviewed to ensure that it complies with the standards and guidelines that are issued by the Minister, and that the archaeological fieldwork and report recommendations ensure the conservation, protection and preservation of the cultural heritage of Ontario. When all matters relating to archaeological sites within the project area of a development proposal have been addressed to the satisfaction of the Ministry of Tourism and Culture, a letter will be issued by the Ministry stating that there are no further concerns with regard to alterations to archaeological sites by the proposed development.

It is an offence under Sections 48 and 69 of the Ontario Heritage Act for any party other than a licensed archaeologist to make any alteration to a known archaeological site or to remove any artifact or other physical evidence of past human use or activity from the site, until such time as a licensed archaeologist has completed archaeological field work on the site, submitted a report to the Minister stating that the site has no further cultural heritage value or interest, and the report has been filed in the Ontario Public Register of Reports referred to in Section 65.1 of the Ontario Heritage Act.

Should previously undocumented archaeological resources be discovered, they may be a new archaeological site and therefore subject to Section 48 (1) of the Ontario Heritage Act. The proponent or person discovering the archaeological resources must cease alteration of the site immediately and engage a licensed consultant archaeologist to carry out archaeological field work, in compliance with Section 48 (1) of the Ontario Heritage Act.

The Cemeteries Act, R.S.O. 1990 c. C. 4 and the Funeral, Burial and Cremation Services Act, 2002, S.O. 2002, c33 (when proclaimed in force) require any person discovering human remains must notify the police or coroner and the Registrar of Cemeteries at the Ministry of Consumer Services.

Archaeological sites recommended for further archaeological fieldwork or protection remain subject to Section 48 (1) of the Ontario Heritage Act and may not be altered, or have artifacts removed from them, except by a person holding an archaeological licence.

5.0 Bibliography

Aerial Photo 20th Century. <http://images.halinet.on.ca/82048/data?n=60>

Armstrong, G.H. 1972. The Original and Meaning of Place Names in Canada. MacMillan Company of Canada, Toronto.

Chapman, L.J. and Putnam, D.F.
1984, The Physiography of Southern Ontario, Third Edition, Ontario Ministry of Natural Resources. Toronto.

Department of National Defence,
1942, Topographic Maps, Brampton.

Esri, Digital Globe, GeoEye, I-Cubed, USDA, USGS, AEX, Getmapping, Aerogrid, IGN, IGP, and the GIS user Community, Ontario Ministry of Natural Resources, Ontario Base Mapping. N.D.

George Town Herald 1839. Newspaper advertisement.

Google Earth,
2015, Google Earth Images. Ontario.

Ministry of Tourism, Culture and Sport,
2011, Standards and Guidelines for Consultant Archaeologists. Toronto.

Ontario Geological Survey (N.D.); Two CD ROM's Containing Surficial Geology Data for Southern Ontario. Sudbury.

Ontario Ministry of Natural Resources, Ontario Base Mapping (OBM). Peterborough.

Ontario Parliament House, 1848. Journal of the House of the Assembly of Upper Canada. Ontario Parliament House of Assembly, Toronto.

Ruggle, Rev. Richard 1973. Norval On The Credit River. Press Procepic, Erin Ontario.

Walker & Miles,
1877, Illustrated Historical Atlas of the County of Halton, Ontario.

Artifact Analysis Sources:

- http://www.thepotteries.org/mark/c/corn_we.html
- <http://www.thepotteries.org/mark/d/davenport.html>
- http://www.thepotteries.org/mark/f/furnival_thom.html
- <http://www.ontarioarchaeology.on.ca/publications/pdf/oa46-6-smith.pdf> *** No longer available
- <http://ontarioarchaeology.wildapricot.org/Resources/Publications/oa16-2-walker.pdf>

REPORT ON THE STAGE 1 AND 2 ARCHAEOLOGICAL ASSESSMENT
OF FIELDGATE LAND DEVELOPMENTS LIMITED'S PROPERTY

- <http://www.sha.org/assets/documents/The%20Wheat%20Pattern%20-%20An%20Illustrated%20Survey%20-%20English.pdf>

REPORT ON THE STAGE 1 AND 2 ARCHAEOLOGICAL ASSESSMENT OF FIELDGATE LAND DEVELOPMENTS LIMITED'S PROPERTY

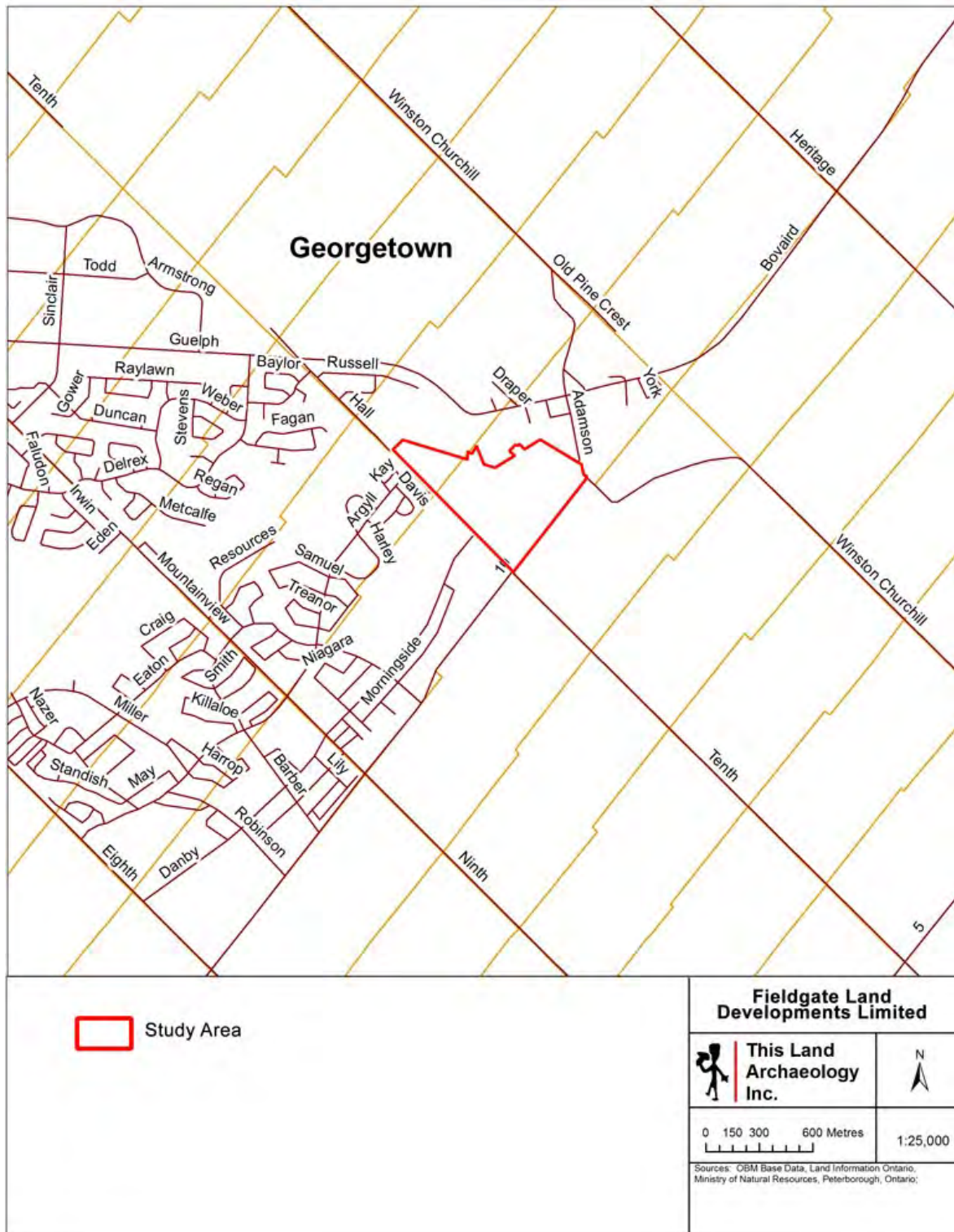


Figure 1: Location of Study Area

REPORT ON THE STAGE 1 AND 2 ARCHAEOLOGICAL ASSESSMENT OF FIELDGATE LAND DEVELOPMENTS LIMITED'S PROPERTY

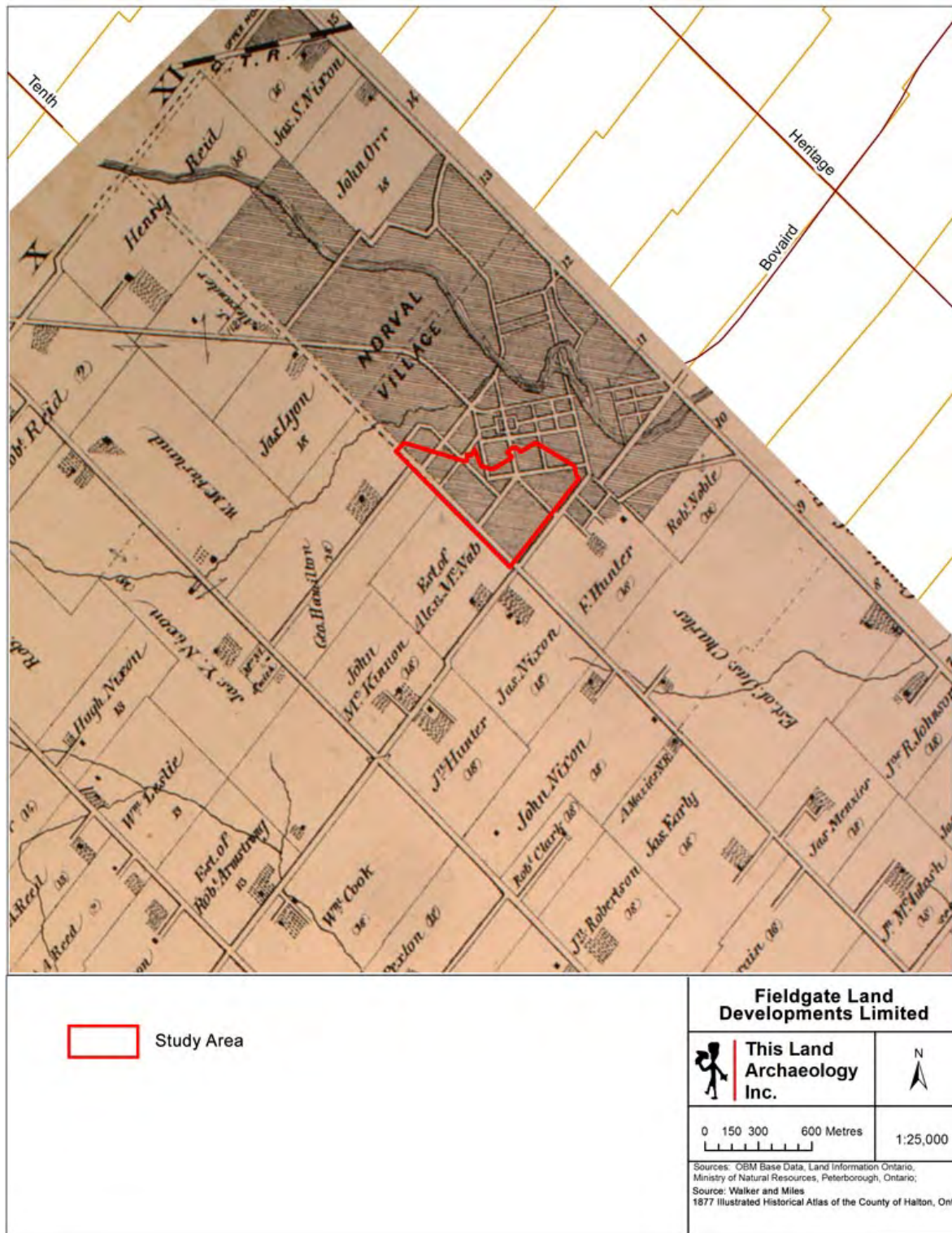


Figure 2: 1877 Illustrated Historical Atlas Showing Location of Study Area

REPORT ON THE STAGE 1 AND 2 ARCHAEOLOGICAL ASSESSMENT
OF FIELDGATE LAND DEVELOPMENTS LIMITED'S PROPERTY

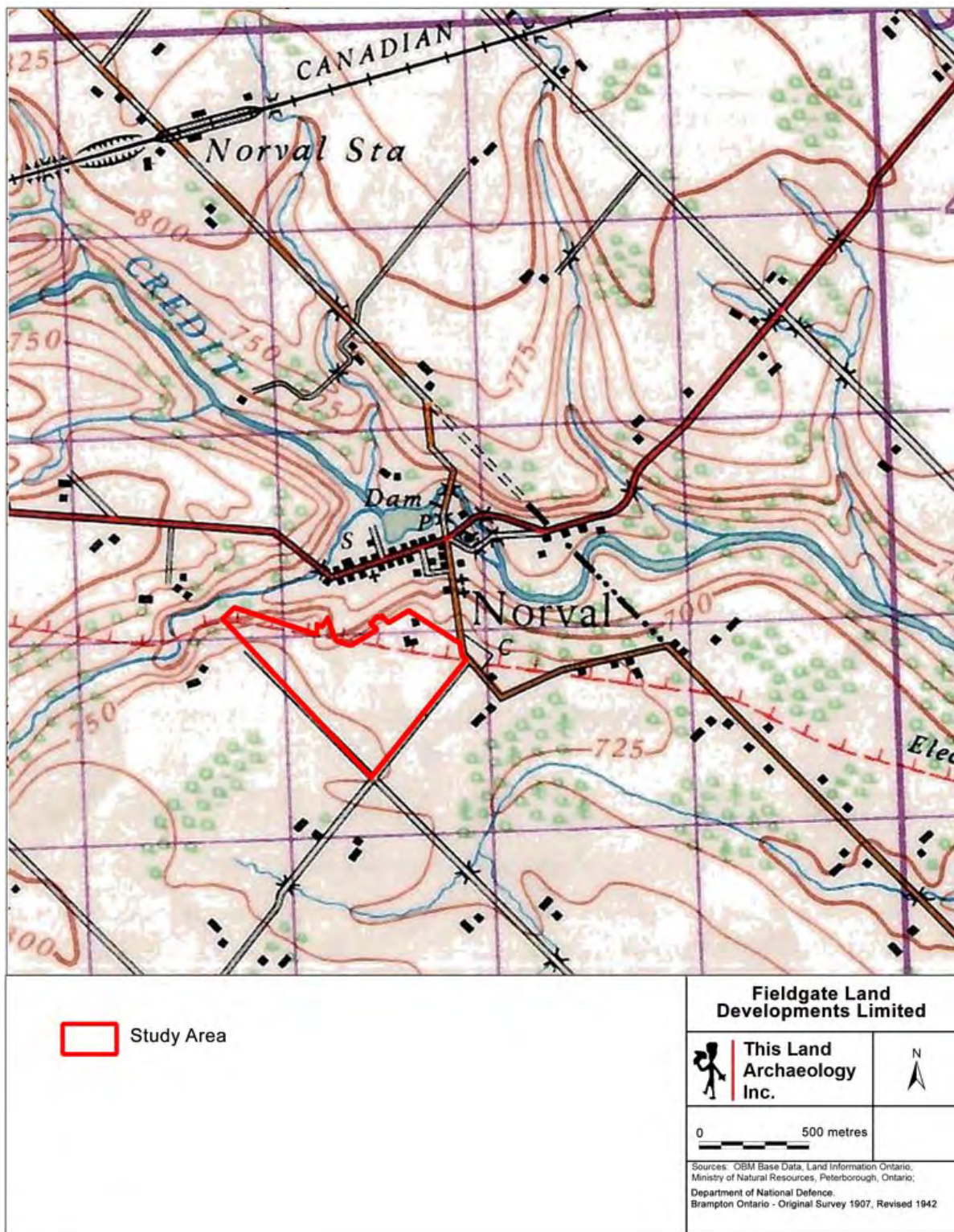


Figure 3: 1942 Department of National Defence Topographic Map

REPORT ON THE STAGE 1 AND 2 ARCHAEOLOGICAL ASSESSMENT OF FIELDGATE LAND DEVELOPMENTS LIMITED'S PROPERTY



Figure 4: Current Land Use of the Study Area

REPORT ON THE STAGE 1 AND 2 ARCHAEOLOGICAL ASSESSMENT OF FIELDGATE LAND DEVELOPMENTS LIMITED'S PROPERTY

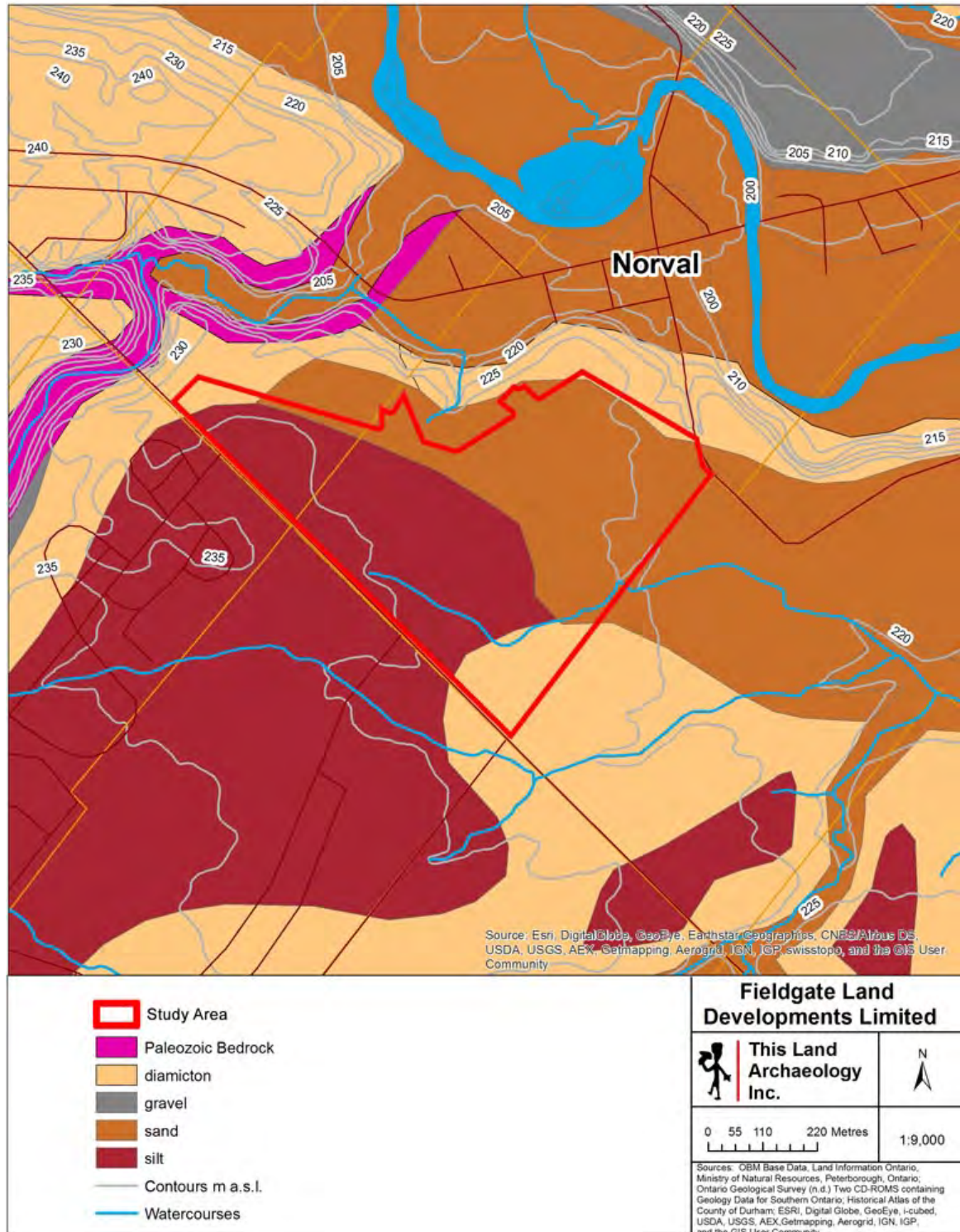


Figure 5: Surficial Geology of the Study Area

REPORT ON THE STAGE 1 AND 2 ARCHAEOLOGICAL ASSESSMENT OF FIELDGATE LAND DEVELOPMENTS LIMITED'S PROPERTY



Figure 6: Proposed Stage 2 Archaeological Assessment

REPORT ON THE STAGE 1 AND 2 ARCHAEOLOGICAL ASSESSMENT OF FIELDGATE LAND DEVELOPMENTS LIMITED'S PROPERTY



Figure 7: Location and Direction of Field Photographs

Redacted due confidentiality

Figure 8: Results of Assessment showing the 2 Permanent Reference Points and the Location and Stage 2 Site Boundaries and the Isolated Findspots

Redacted due confidentiality

**Figure 9: Location and Direction of Some Site Specific
Photographs**

Redacted due confidentiality

**Figure 10: Results of Assessment showing the Site Boundaries
and the 5 site reference points for each site**

Redacted due confidentiality

Figure 11: Results of Assessment with Draft Plan Overlay

REPORT ON THE STAGE 1 AND 2 ARCHAEOLOGICAL ASSESSMENT
OF FIELDGATE LAND DEVELOPMENTS LIMITED'S PROPERTY



Plate 1: Pedestrian Survey (Figure 7)



Plate 2: Ground Visibility (Figure 7)



Plate 3: Field Conditions (Figure 7)



Plate 4: Field Conditions (Figure 7)



Plate 5: Field Conditions (Figure 7)



Plate 6: Field Conditions (Figure 7)

REPORT ON THE STAGE 1 AND 2 ARCHAEOLOGICAL ASSESSMENT
OF FIELDGATE LAND DEVELOPMENTS LIMITED'S PROPERTY



Plate 7: Field Conditions (Figure 7)



Plate 8: Field Conditions (Figure 7)



Plate 9: Field Conditions (Figure 7)

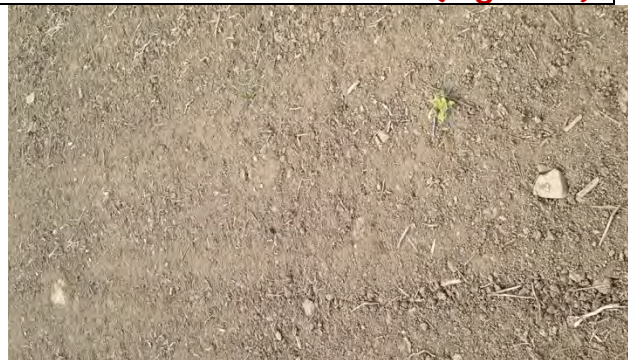


Plate 10: Visibility (Figure 7)



Plate 11: Field Conditions (Figure 7)



Plate 12: Field Conditions (Figure 7)

REPORT ON THE STAGE 1 AND 2 ARCHAEOLOGICAL ASSESSMENT
OF FIELDGATE LAND DEVELOPMENTS LIMITED'S PROPERTY



Plate 13: Test Pitting Tree Line (Figure 7)



Plate 14: Extant Barn (Figure 7)



Plate 15: Test Pitting Front Lawn of House #1 (Figure 7)



Plate 16: House #1 (Figure 7)

**REPORT ON THE STAGE 1 AND 2 ARCHAEOLOGICAL ASSESSMENT
OF FIELDGATE LAND DEVELOPMENTS LIMITED'S PROPERTY**



Plate 17: Test Pitting Front Lawn of House 2 (Figure 7)



Plate 18: Test Pit Example (Figure 7)



Plate 19: Low Lying Marsh Area (Figure 7)



Plate 20: Access Road – Former Railway (Figure 7)

REPORT ON THE STAGE 1 AND 2 ARCHAEOLOGICAL ASSESSMENT
OF FIELDGATE LAND DEVELOPMENTS LIMITED'S PROPERTY



**Plate 21: Norval Site 1 Stage 2
(Figure 9)**



**Plate 22: Norval Site 2 Stage 2
(Figure 9)**



**Plate 23: Norval Site 3 Stage 2
(Agricultural Field Portion) (Figure 9)**



**Plate 24: Norval Site 4 Stage 2
(Figure 9)**

REPORT ON THE STAGE 1 AND 2 ARCHAEOLOGICAL ASSESSMENT
OF FIELDGATE LAND DEVELOPMENTS LIMITED'S PROPERTY



Plate 25: Norval Site 5 Stage 2 (Figure 9)



Plate 26: Norval Site 6 Stage 2 (Figure 9)

REPORT ON THE STAGE 1 AND 2 ARCHAEOLOGICAL ASSESSMENT OF FIELDGATE LAND DEVELOPMENTS LIMITED'S PROPERTY



Plate 27: Lucy Maud Montgomery's 1926 Map of Norval, Ontario

REPORT ON THE STAGE 1 AND 2 ARCHAEOLOGICAL ASSESSMENT
OF FIELDGATE LAND DEVELOPMENTS LIMITED'S PROPERTY

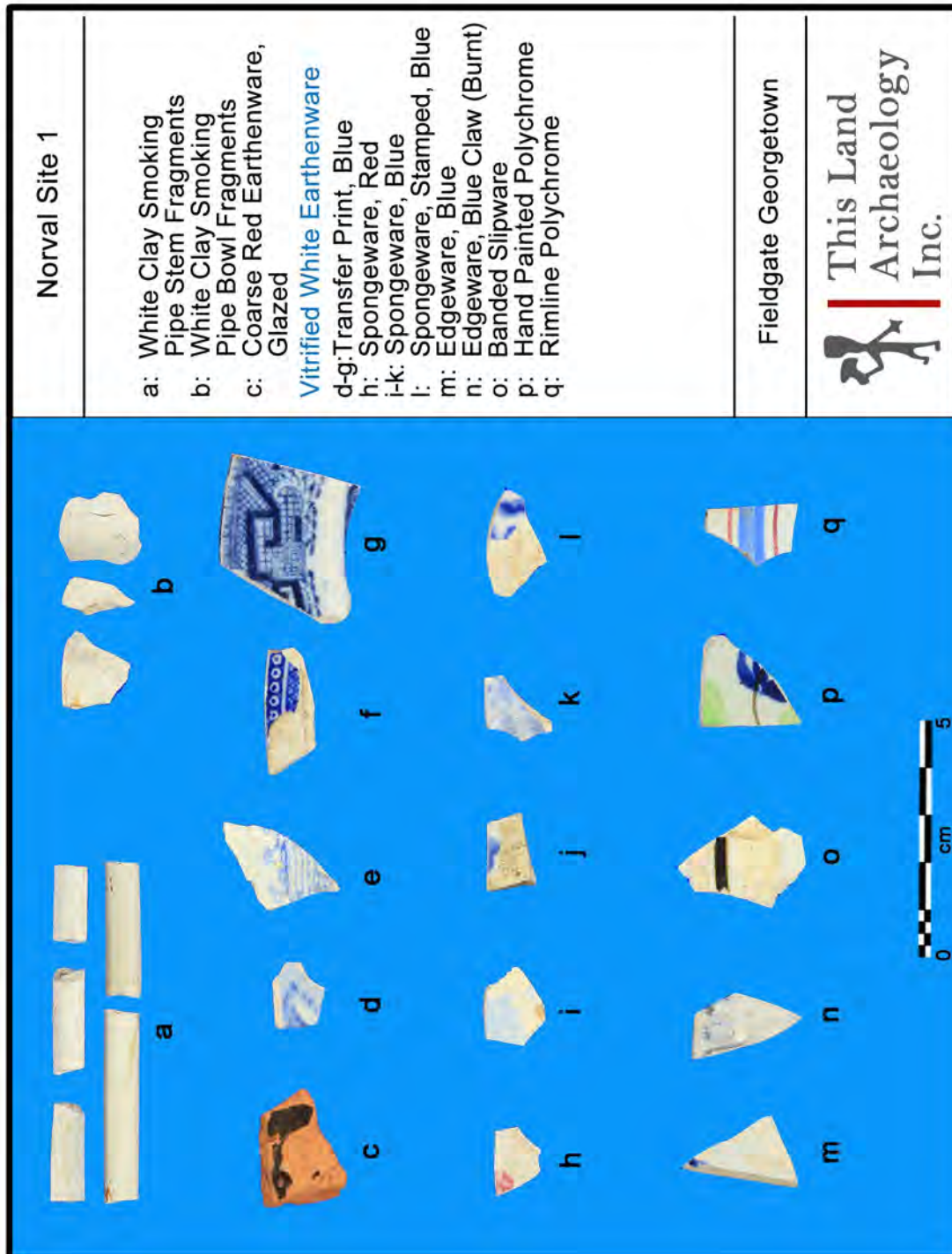


Plate 28: Sample of Artifacts Collected Norval Site 1

REPORT ON THE STAGE 1 AND 2 ARCHAEOLOGICAL ASSESSMENT
OF FIELDGATE LAND DEVELOPMENTS LIMITED'S PROPERTY

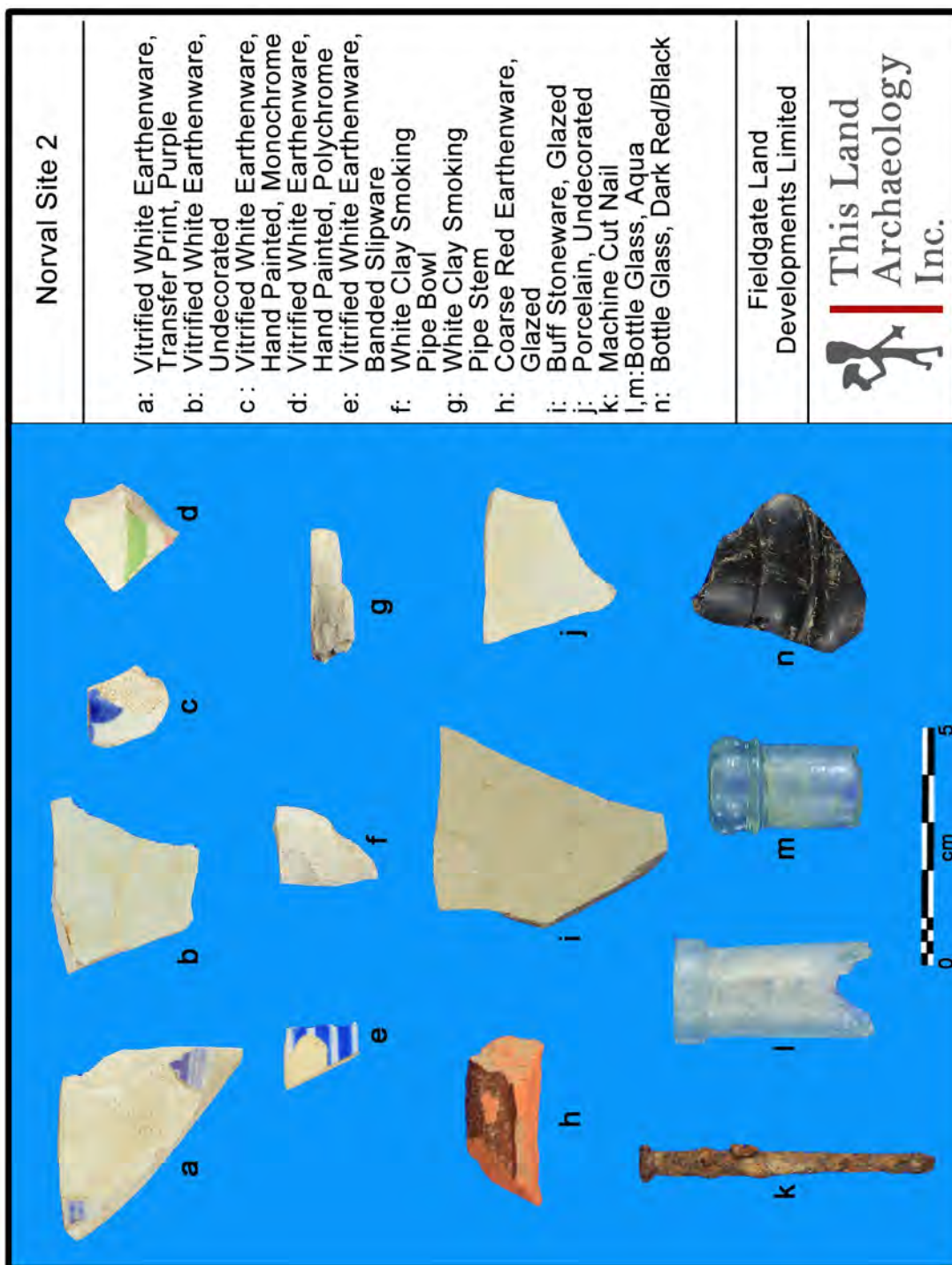


Plate 29: Sample of Artifacts Collected Norval Site 2

REPORT ON THE STAGE 1 AND 2 ARCHAEOLOGICAL ASSESSMENT
OF FIELDGATE LAND DEVELOPMENTS LIMITED'S PROPERTY



Plate 30: Sample of Artifacts Collected Norval Site 3

REPORT ON THE STAGE 1 AND 2 ARCHAEOLOGICAL ASSESSMENT
OF FIELDGATE LAND DEVELOPMENTS LIMITED'S PROPERTY

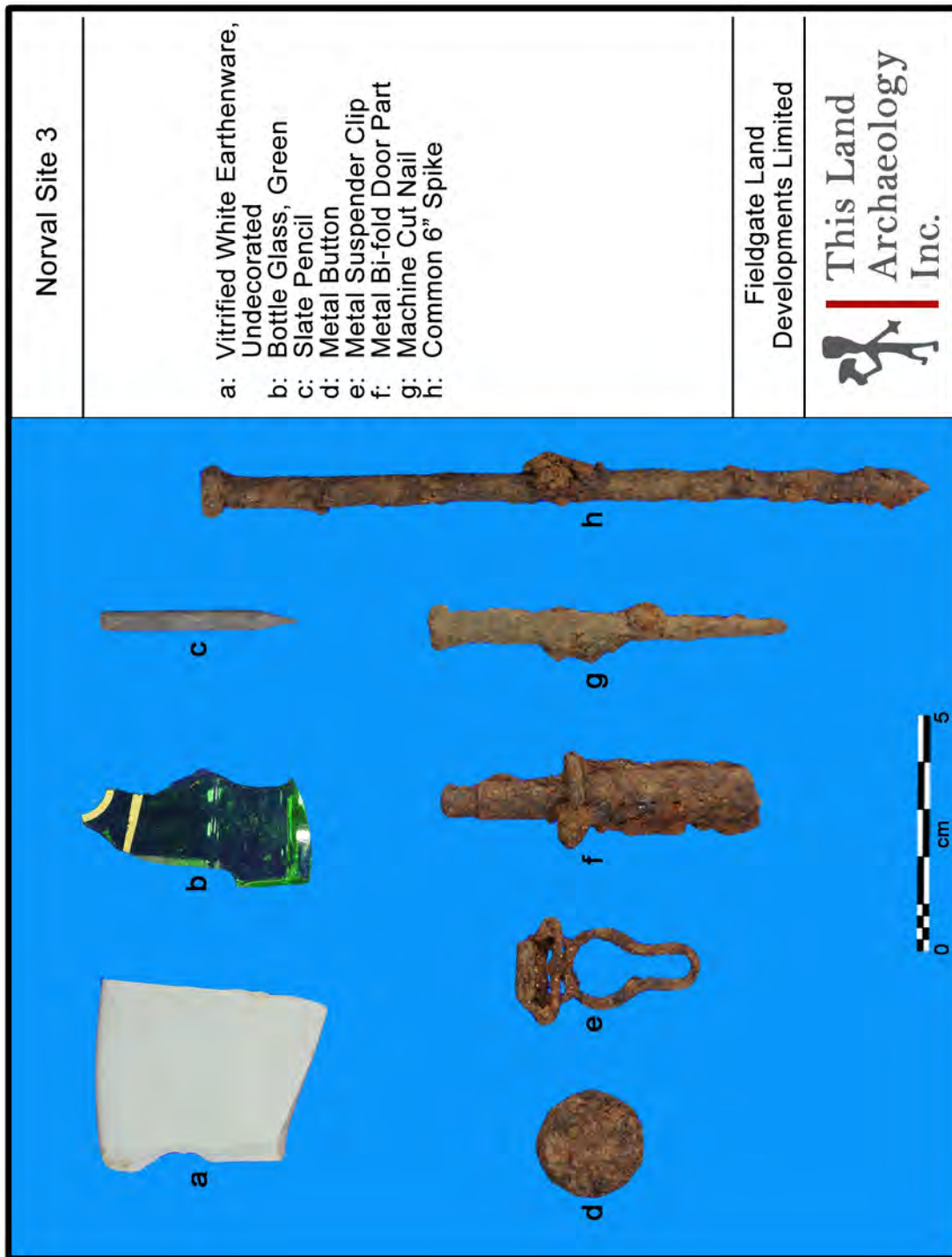


Plate 31: Sample of Artifacts Collected Norval Site 3

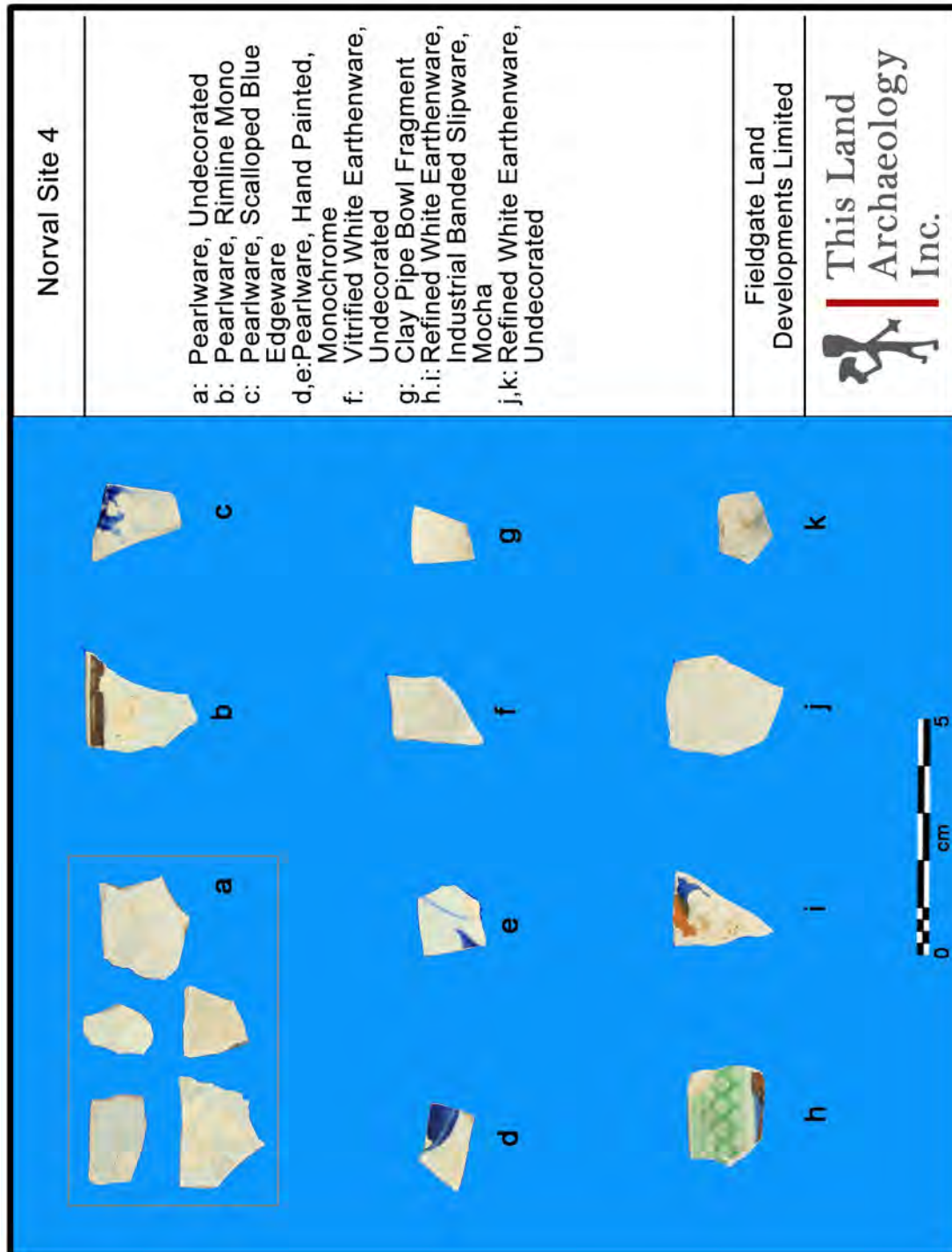


Plate 32: Sample of Artifacts Collected Norval Site 4

REPORT ON THE STAGE 1 AND 2 ARCHAEOLOGICAL ASSESSMENT
OF FIELDGATE LAND DEVELOPMENTS LIMITED'S PROPERTY

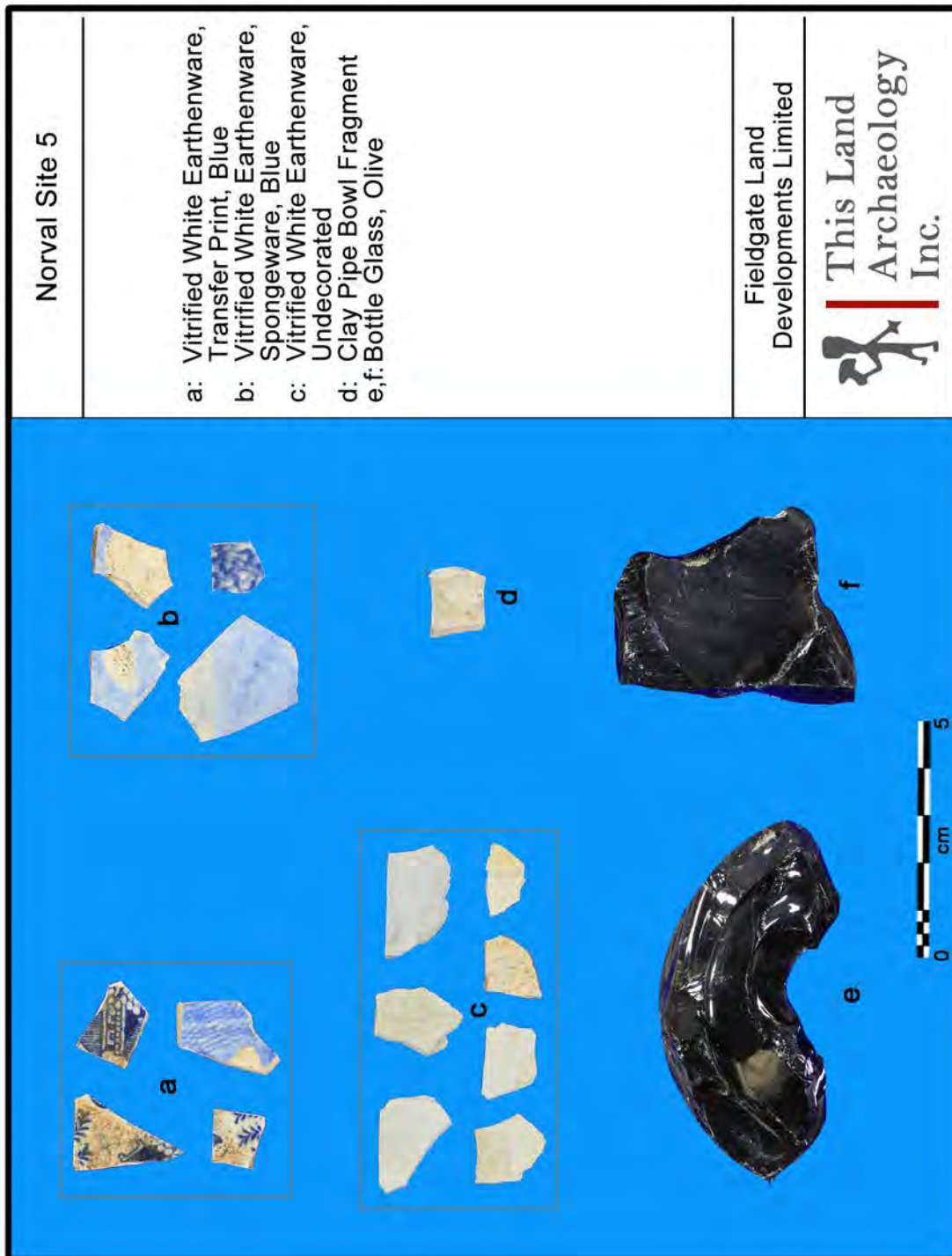


Plate 33: Sample of Artifacts Collected Norval Site 5

REPORT ON THE STAGE 1 AND 2 ARCHAEOLOGICAL ASSESSMENT
OF FIELDGATE LAND DEVELOPMENTS LIMITED'S PROPERTY

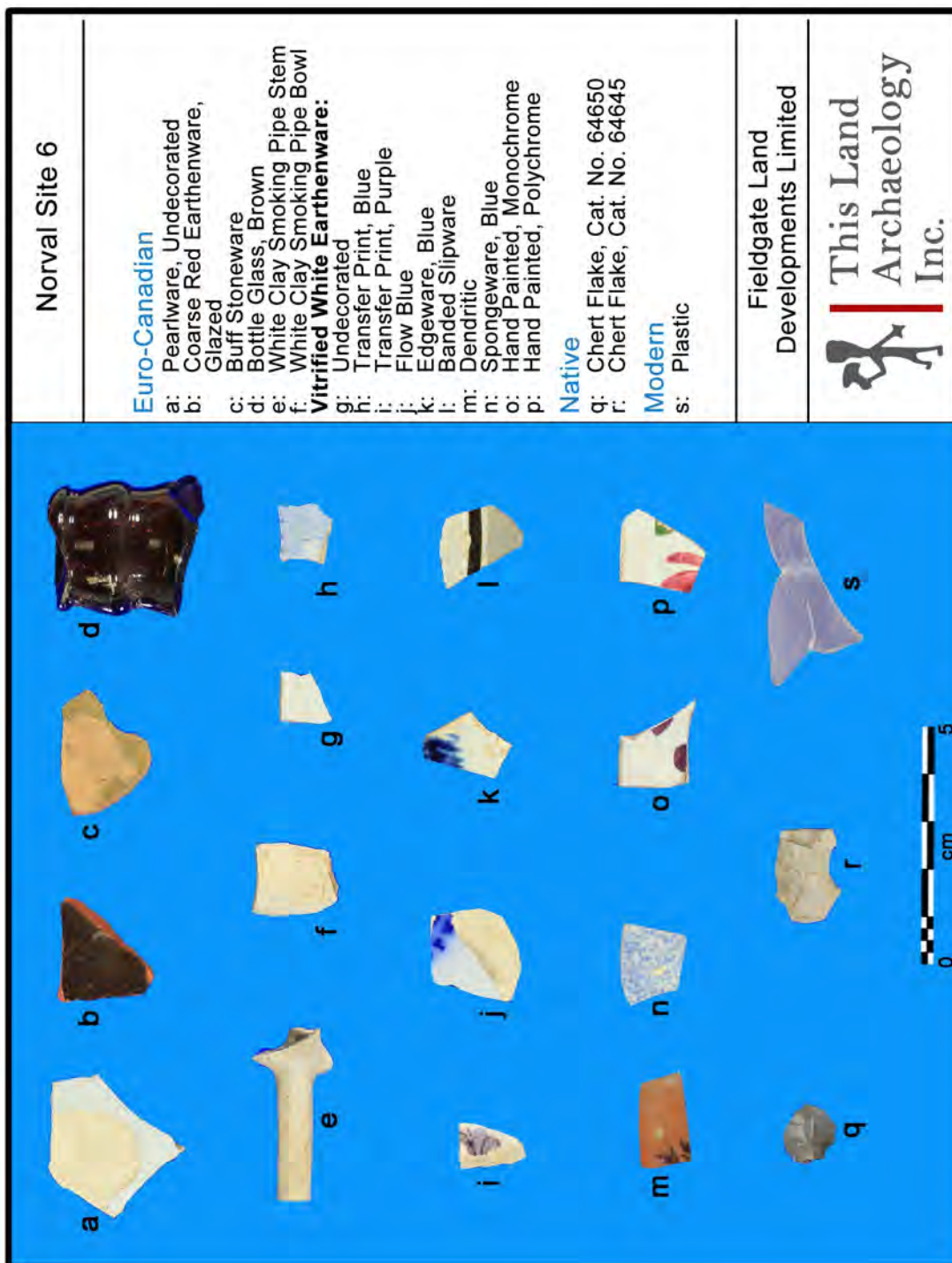


Plate 34: Sample of Artifacts Collected Norval Site 6

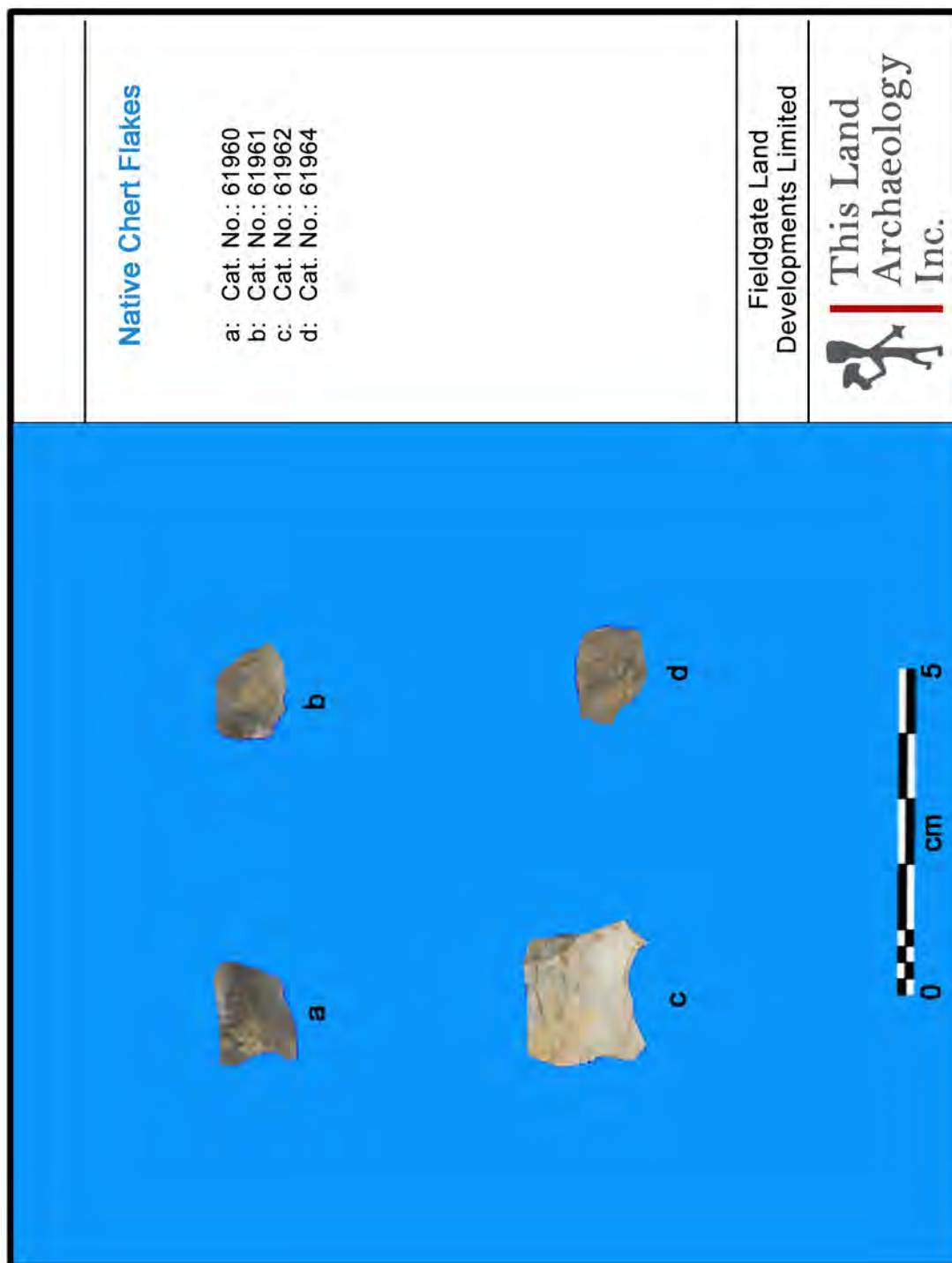


Plate 35: Sample of Artifacts Collected Norval Site 3 – Isolated Findspots

5.1 APPENDICES

5.2 Norval Site 1 – Visual Assessment

Table 6: Summary List of Artifacts

Table 7: Artifact Catalogue

5.3 Norval Site 2– Visual Assessment

Table 8: Summary List of Artifacts

Table 9: Artifact Catalogue

5.4 Norval Site 3 – Visual Assessment

Table 10: Summary List of Artifacts

Table 11: Artifact Catalogue

5.5 Norval Site 3 – Test Pit Assessment

Table 12: Summary List of Artifacts

Table 13: Artifact Catalogue

5.6 Norval Site 4 – Visual Assessment

Table 14: Summary List of Artifacts

Table 15: Artifact Catalogue

5.7 Norval Site 5 – Visual Assessment

Table 16: Summary List of Artifacts

Table 17: Artifact Catalogue

5.8 Norval Site 6 – Visual Assessment

Table 18: Summary List of Artifacts

Table 19: Artifact Catalogue

5.9 Norval Isolated Finds – Visual Assessment

Table 20: Summary List of Artifacts

Table 21: Artifact Catalogue

Summary List of Artifacts from Stage 2 Visual Survey of the Norval Site 1

Table 6

Class	Category	No.	%
Architectural			
	Thick Window Glass	1	0.86
Ceramic			
	Buff Stoneware	1	0.86
	Burnt Ceramics	1	0.86
	Coarse Red Earthenware	14	12.07
	Vitrified White Earthenware	83	71.55
Glass			
	Bottle Glass	7	6.03
	Melted Glass	1	0.86
Other			
	Pipe Bowl	3	2.59
	Pipe Stem	5	4.31
	Totals	116	100.00

Artifact Catalogue Data from the Stage 2 Visual Survey of the Norval Site 1

Table 7

FindSpot	ID	Ext	Cl	Fun	Description	Decoration	Colour	Pieces	Supplemental	Box #
1	65201	.137	_Cer_	_Ind_	Vitrified White Earthenware	Undecorated	None	3		1
2	65202	.137	_Cer_	_Ind_	Vitrified White Earthenware	Undecorated	None	2		1
3	65203	.137	_Cer_	_Ind_	Vitrified White Earthenware	Undecorated	None	1		1
4	65204	.137	_Cer_	_Ind_	Vitrified White Earthenware	Undecorated	None	1		1
4	65204	.132	_Cer_	_Ind_	Vitrified White Earthenware	Transfer Print	Blue	1		1
4	65204	.129	_Cer_	_Ind_	Vitrified White Earthenware	Sponge Stamped	Blue	1		1
4	65204	.043	_Cer_	_Ind_	Coarse Red Earthenware	Glazed	Any	1		1
5	65205	.043	_Cer_	_Ind_	Coarse Red Earthenware	Glazed	Any	1		1
6	65206	.137	_Cer_	_Ind_	Vitrified White Earthenware	Undecorated	None	3		1
7	65207	.137	_Cer_	_Ind_	Vitrified White Earthenware	Undecorated	None	8		1
7	65207	.132	_Cer_	_Ind_	Vitrified White Earthenware	Transfer Print	Blue	2		1
7	65207	.047	_Cer_	_Ind_	Coarse Red Earthenware	Unglazed	None	1		1
7	65207	.036	_Cer_	_Ind_	Buff Stoneware	Glazed	All	1		1
8	65208	.150	_Gls_	_Ind_	Bottle Glass		Clear	1		1
8	65208	.137	_Cer_	_Ind_	Vitrified White Earthenware	Undecorated	None	3		1
10	65210	.137	_Cer_	_Ind_	Vitrified White Earthenware	Undecorated	None	1		1
10	65210	.130	_Cer_	_Ind_	Vitrified White Earthenware	Sponge Stamped	Other	1	VWE stamped spongeware blue - 1;	1
11	65211	.137	_Cer_	_Ind_	Vitrified White Earthenware	Undecorated	None	2		1
12	65212	.150	_Gls_	_Ind_	Bottle Glass		Clear	3		1
12	65212	.137	_Cer_	_Ind_	Vitrified White Earthenware	Undecorated	None	6		1
12	65212	.126	_Cer_	_Ind_	Vitrified White Earthenware	Other	Other	1	VWE Rimline poly blue / red -1;	1
12	65212	.043	_Cer_	_Ind_	Coarse Red Earthenware	Glazed	Any	2		1
12	65212	.176	_Oth_	_Smo_	Pipe Stem			1		1
13	65213	.147	_Gls_	_Ind_	Bottle Glass		Aqua	1	BG Aqua cup bottom smooth base-1;	1
13	65213	.159	_Gls_	_Ind_	Melted Glass		Any	1		1
13	65213	.137	_Cer_	_Ind_	Vitrified White Earthenware	Undecorated	None	9		1
13	65213	.127	_Cer_	_Ind_	Vitrified White Earthenware	Painted	Polychrome	1	VWE hand painted polychrome black / blue / green -1;	1
13	65213	.132	_Cer_	_Ind_	Vitrified White Earthenware	Transfer Print	Blue	6		1
13	65213	.129	_Cer_	_Ind_	Vitrified White Earthenware	Sponge Stamped	Blue	5		1
13	65213	.130	_Cer_	_Ind_	Vitrified White Earthenware	Sponge Stamped	Other	1	VWE spongeware red -1;	1
13	65213	.175	_Oth_	_Smo_	Pipe Bowl			1		1
13	65213	.176	_Oth_	_Smo_	Pipe Stem			3		1
14	65214	.149	_Gls_	_Ind_	Bottle Glass		Brown	2		1
14	65214	.137	_Cer_	_Ind_	Vitrified White Earthenware	Undecorated	None	7		1
14	65214	.132	_Cer_	_Ind_	Vitrified White Earthenware	Transfer Print	Blue	3		1
14	65214	.121	_Cer_	_Ind_	Vitrified White Earthenware	Edgware	Blue	1		1
15	65215	.025	_Oth_	_Arc_	Thick Window Glass			1		1
15	65215	.137	_Cer_	_Ind_	Vitrified White Earthenware	Undecorated	None	10		1
15	65215	.124	_Cer_	_Ind_	Vitrified White Earthenware	Painted	Monochrome	1		1
15	65215	.129	_Cer_	_Ind_	Vitrified White Earthenware	Sponge Stamped	Blue	1		1
15	65215	.130	_Cer_	_Ind_	Vitrified White Earthenware	Sponge Stamped	Other	1	VWE stamped spongeware blue - 1;	1

Artifact Catalogue Data from the Stage 2 Visual Survey of the Norval Site 1

Table 7

FindSpot	ID	Ext _ Cla _ Fun _ Description	Decoration	Colour	Pieces	Supplemental	Box #
15	65215	.120 _ Cer _ Ind _ Vitrified White Earthenware	Bands Slipped	All	1		1
15	65215	.039 _ Cer _ Ind _ Burnt Ceramics	Indeterminate	Not Applicable	1		1
15	65215	.043 _ Cer _ Ind _ Coarse Red Earthenware	Glazed	Any	1		1
15	65215	.047 _ Cer _ Ind _ Coarse Red Earthenware	Unglazed	None	8		1
15	65215	.175 _ Oth _ Smo _ Pipe Bowl			2		1
15	65215	.176 _ Oth _ Smo _ Pipe Stem			1		1
				Total	116		

Abbreviation Description

Class (Cla)	Acronym
Aboriginal	Abo
Ceramics	Cer
Faunal	Fau
Floral	Flo
Glass	Gls
Other	Oth

Function (Fun)	Acronym
Architectural	Arc
Ceramic	Cer
Chimney Glass	Chg
Currency	Cur
Cutlery	Cut
Fastener	Fas
Heat	Hea
Indeterminate	Ind
Jar Glass	Jar
Lithic	Lit
Markers Mark	Mam
Slate Fragment	Slt
Slate Pencil	Slp
Smoking	Smo
Soil Sample Heavy Fraction	SSH
Soil Sample Light Fraction	SSL
Thimble	Thi
Unidentified	Uni
Zero Artifacts	Zer

When function, makers mark or manufacture technique is known please see the Supplemental Table for complete description.

Summary List of Artifacts from Stage 2 Visual Survey of the Norval Site 2

Table 8

Class	Category	No.	%
Architectural			
	Machine Cut Nails	1	2.38
	Mortar	1	2.38
	Thick Window Glass	1	2.38
Ceramic			
	Buff Stoneware	1	2.38
	Coarse Red Earthenware	1	2.38
	Porcelain	1	2.38
	Vitrified White Earthenware	27	64.29
Glass			
	Bottle Glass	7	16.67
Other			
	Pipe Bowl	1	2.38
	Pipe Stem	1	2.38
	Totals	42	100.00

Artifact Catalogue Data from the Stage 2 Visual Survey of the Norval Site 2

Table 9

FindSpot	ID	Ext _ Cla _ Fun _ Description	Decoration	Colour	Pieces	Supplemental	Box #
1	65221	.153 _ GlS _ Ind _ Bottle Glass		Olive	1		1
2	65222	.152 _ GlS _ Ind _ Bottle Glass		Manganese	1		1
2	65222	.120 _ Cer _ Ind _ Vitrified White Earthenware	Bands Slipped	All	1		1
3	65223	.025 _ Oth _ Arc _ Thick Window Glass			1		1
3	65223	.137 _ Cer _ Ind _ Vitrified White Earthenware	Undecorated	None	1		1
3	65223	.124 _ Cer _ Ind _ Vitrified White Earthenware	Painted	Monochrome	1		1
4	65224	.137 _ Cer _ Ind _ Vitrified White Earthenware	Undecorated	None	1		1
5	65225	.154 _ GlS _ Ind _ Bottle Glass		Other Bottle Glass	1	BG very dark reddish purple black amethyst ? -1;	1
5	65225	.120 _ Cer _ Ind _ Vitrified White Earthenware	Bands Slipped	All	1		1
6	65226	.147 _ GlS _ Ind _ Bottle Glass		Aqua	1		1
7	65227	.153 _ GlS _ Ind _ Bottle Glass		Olive	1		1
7	65227	.137 _ Cer _ Ind _ Vitrified White Earthenware	Undecorated	None	1		1
8	65228	.020 _ Oth _ Arc _ Mortar			1		1
8	65228	.018 _ Oth _ Arc _ Machine Cut Nails			1		1
8	65228	.137 _ Cer _ Ind _ Vitrified White Earthenware	Undecorated	None	7		1
8	65228	.127 _ Cer _ Ind _ Vitrified White Earthenware	Painted	Polychrome	1		1
8	65228	.043 _ Cer _ Ind _ Coarse Red Earthenware	Glazed	Any	1		1
8	65228	.175 _ Oth _ Smo _ Pipe Bowl			1		1
9	65229	.137 _ Cer _ Ind _ Vitrified White Earthenware	Undecorated	None	3		1
9	65229	.176 _ Oth _ Smo _ Pipe Stem			1		1
10	65230	.137 _ Cer _ Ind _ Vitrified White Earthenware	Undecorated	None	5		1
11	65231	.147 _ GlS _ Ind _ Bottle Glass		Aqua	1	BG Aqua flat or patent applied finish c. 1875-1;	1
12	65232	.135 _ Cer _ Ind _ Vitrified White Earthenware	Transfer Print	Other	1	VWE TP purple-1;	1
13	65233	.137 _ Cer _ Ind _ Vitrified White Earthenware	Undecorated	None	1		1
13	65233	.036 _ Cer _ Ind _ Buff Stoneware	Glazed	All	1		1
14	65234	.135 _ Cer _ Ind _ Vitrified White Earthenware	Transfer Print	Other	1	VWE TP purple-1;	1
15	65235	.137 _ Cer _ Ind _ Vitrified White Earthenware	Undecorated	None	1		1
16	65236	.137 _ Cer _ Ind _ Vitrified White Earthenware	Undecorated	None	1		1
16	65236	.076 _ Cer _ Ind _ Porcelain	Undecorated	None	1		1
17	65237	.147 _ GlS _ Ind _ Bottle Glass		Aqua	1	BG Aqua double ring applied finish c. 1875 -1;	1
				Total	42		

Artifact Catalogue Data from the Stage 2 Visual Survey of the Norval Site 2

Table 9

Abbreviation Description

Class (Cla)	Acronym
Aboriginal	Abo
Ceramics	Cer
Faunal	Fau
Floral	Flo
Glass	Gls
Other	Oth

Function (Fun)	Acronym
Architectural	Arc
Ceramic	Cer
Chimney Glass	Chg
Currency	Cur
Cutlery	Cut
Fastener	Fas
Heat	Hea
Indeterminate	Ind
Jar Glass	Jar
Lithic	Lit
Markers Mark	Mam
Slate Fragment	Slf
Slate Pencil	Slp
Smoking	Smo
Soil Sample Heavy Fraction	SSH
Soil Sample Light Fraction	SSL
Thimble	Thi
Unidentified	Uni
Zero Artifacts	Zer

When function, makers mark or manufacture technique is known please see the Supplemental Table for complete description.

Summary List of Artifacts from Stage 2 Visual Survey of the Norval Site 3

Table 10

Class	Category	No.	%
Architectural			
	Machine Cut Nails	1	2.13
Ceramic			
	Buff Stoneware	1	2.13
	Coarse Red Earthenware	1	2.13
	Vitrified White Earthenware	33	70.21
Glass			
	Bottle Glass	10	21.28
	Chimney Glass	1	2.13
	Totals	47	100.00

Artifact Catalogue Data from the Stage 2 Visual Survey of the Norval Site 3

Table 11

FindSpot	ID	Ext Cla Fun Description	Decoration	Colour	Pieces	Supplemental	Box #
1	64500	.018 _Oth _Arc Machine Cut Nails			1		1
1	64500	.153 _Gls _Ind Bottle Glass		Olive	1		1
1	64500	.147 _Gls _Ind Bottle Glass		Aqua	9	BG aqua double ring applied finish c. 1875 -1;	1
1	64500	.155 _Gls _Chg Chimney Glass		Clear	1	Clear glass handle from oil lamp-1;	1
1	64500	.125 _Cer _Ind Vitrified White Earthenware	Moulded	Moulded	1	VWE molded wheat pattern-1;	1
1	64500	.137 _Cer _Ind Vitrified White Earthenware	Undecorated	None	30		1
1	64500	.123 _Cer _Ind Vitrified White Earthenware	Flow	Blue	1		1
1	64500	.126 _Cer _Ind Vitrified White Earthenware	Other	Other	1	VWE rimline mono green-1;	1
1	64500	.043 _Cer _Ind Coarse Red Earthenware	Glazed	Any	1		1
1	64500	.036 _Cer _Ind Buff Stoneware	Glazed	All	1	Buff Stoneware ink well fragment-1;	1
				Total	47		

Abbreviation Description

Class (Cla)	Acronym
Aboriginal	Abo
Ceramics	Cer
Faunal	Fau
Floral	Flo
Glass	Gls
Other	Oth

Function (Fun)	Acronym
Architectural	Arc
Ceramic	Cer
Chimney Glass	Chg
Currency	Cur
Cutlery	Cut
Fastener	Fas
Heat	Hea
Indeterminate	Ind
Jar Glass	Jar
Lithic	Lit
Markers Mark	Mam

Artifact Catalogue Data from the Stage 2 Visual Survey of the Norval Site 3

Table 11

Slate Fragment	Slf
Slate Pencil	Slp
Smoking	Smo
Soil Sample Heavy Fraction	SSH
Soil Sample Light Fraction	SSL
Thimble	Thi
Unidentified	Uni
Zero Artifacts	Zer

When function, makers mark or manufacture technique is known please see the Supplemental Table for complete description.

Summary List of Artifacts from Stage 2 Test Pits of the Norval Site 3

Table 12

Class	Category	No.	%
Architectural			
	Common Nails	9	11.84
	Common Spike	2	2.63
	Machine Cut Nails	14	18.42
	Mortar	3	3.95
	Thick Window Glass	2	2.63
Ceramic			
	Coarse Red Earthenware	2	2.63
	Vitrified White Earthenware	22	28.95
Faunal			
	Bone Fragment	1	1.32
	Burned Bone	2	2.63
Glass			
	Bottle Glass	3	3.95
	Melted Glass	2	2.63
Other			
	Metal	5	6.58
	Metal Buttons	1	1.32
	Metal Indeterminate object	2	2.63
	Miscellaneous	4	5.26
	Slag	1	1.32
	Slate Pencil	1	1.32
	Totals	76	100.00

Artifact Catalogue Data from the Stage 2 Test Pits of the Norval Site 3

Table 13

FindSpot	ID	Ext _ _ Cla _ _ Fun _ _ Description	Decoration	Colour	Pieces	Supplemental	Box #
1	64501	.018 _ _ Oth _ _ Arc _ _ Machine Cut Nails			1		1
2	64502	.025 _ _ Oth _ _ Arc _ _ Thick Window Glass			1		1
2	64502	.174 _ _ Oth _ _ Slp _ _ Slate Pencil			1		1
3	64503	.018 _ _ Oth _ _ Arc _ _ Machine Cut Nails			2		1
3	64503	.014 _ _ Oth _ _ Arc _ _ Common Nails			2		1
4	64504	.014 _ _ Oth _ _ Arc _ _ Common Nails			1		1
4	64504	.137 _ _ Cer _ _ Ind _ _ Vitrified White Earthenware	Undecorated	None	1		1
5	64505	.018 _ _ Oth _ _ Arc _ _ Machine Cut Nails			2		1
6	64506	.018 _ _ Oth _ _ Arc _ _ Machine Cut Nails			1		1
6	64506	.014 _ _ Oth _ _ Arc _ _ Common Nails			2		1
7	64507	.168 _ _ Oth _ _ Ind _ _ Metal			2	Metal wire-2;	1
8	64508	.014 _ _ Oth _ _ Arc _ _ Common Nails			1		1
9	64509	.015 _ _ Oth _ _ Arc _ _ Common Spike			1		1
10	64510	.025 _ _ Oth _ _ Arc _ _ Thick Window Glass			1		1
11	64511	.137 _ _ Cer _ _ Ind _ _ Vitrified White Earthenware	Undecorated	None	1		1
12	64512	.018 _ _ Oth _ _ Arc _ _ Machine Cut Nails			1		1
12	64512	.168 _ _ Oth _ _ Ind _ _ Metal			1	Metal wire-1;	1
13	64513	.137 _ _ Cer _ _ Ind _ _ Vitrified White Earthenware	Undecorated	None	1		1
14	64514	.169 _ _ Oth _ _ Ind _ _ Miscellaneous			3	MISC white plastic fragments-3;	1
15	64515	.018 _ _ Oth _ _ Arc _ _ Machine Cut Nails			1		1
15	64515	.029 _ _ Fau _ _ Uni _ _ Burned Bone			2		1
15	64515	.172 _ _ Oth _ _ Hea _ _ Slag			1		1
16	64516	.137 _ _ Cer _ _ Ind _ _ Vitrified White Earthenware	Undecorated	None	1		1
17	64517	.137 _ _ Cer _ _ Ind _ _ Vitrified White Earthenware	Undecorated	None	1		1
18	64518	.014 _ _ Oth _ _ Arc _ _ Common Nails			2		1
18	64518	.151 _ _ GlS _ _ Ind _ _ Bottle Glass		Green	1	BG green with ACL printing >1934-1;	1
18	64518	.159 _ _ GlS _ _ Ind _ _ Melted Glass		Any	2		1
18	64518	.137 _ _ Cer _ _ Ind _ _ Vitrified White Earthenware	Undecorated	None	3		1
18	64518	.168 _ _ Oth _ _ Ind _ _ Metal			2	Metal bi-fold door part modern - 1; Metal suspender clip-1;	1

Artifact Catalogue Data from the Stage 2 Test Pits of the Norval Site 3

Table 13

FindSpot	ID	Ext _ _Cla _ _Fun _ _Description	Decoration	Colour	Pieces	Supplemental	Box #
18	64518	.033 _ _Oth _ _Fas _ _Metal Buttons			1		1
19	64519	.020 _ _Oth _ _Arc _ _Mortar			3		1
19	64519	.028 _ _Fau _ _Uni _ _Bone Fragment			1		1
20	64520	.018 _ _Oth _ _Arc _ _Machine Cut Nails			1		1
20	64520	.147 _ _Gls _ _Ind _ _Bottle Glass		Aqua	1		1
20	64520	.137 _ _Cer _ _Ind _ _Vitrified White Earthenware	Undecorated	None	7		1
20	64520	.047 _ _Cer _ _Ind _ _Coarse Red Earthenware	Unglazed	None	2		1
20	64520	.169 _ _Oth _ _Ind _ _Miscellaneous			1	MISC black plastic fragment-1;	1
20	64520	.190 _ _Oth _ _Ind _ _Indeterminate Metal			1		1
21	64521	.137 _ _Cer _ _Ind _ _Vitrified White Earthenware	Undecorated	None	1		1
21	64521	.190 _ _Oth _ _Ind _ _Indeterminate Metal			1		1
22	64522	.018 _ _Oth _ _Arc _ _Machine Cut Nails			1		1
23	64523	.018 _ _Oth _ _Arc _ _Machine Cut Nails			1		1
23	64523	.137 _ _Cer _ _Ind _ _Vitrified White Earthenware	Undecorated	None	2		1
24	64524	.137 _ _Cer _ _Ind _ _Vitrified White Earthenware	Undecorated	None	1		1
25	64525	.137 _ _Cer _ _Ind _ _Vitrified White Earthenware	Undecorated	None	2		1
26	64526	.018 _ _Oth _ _Arc _ _Machine Cut Nails			1		1
27	64527	.015 _ _Oth _ _Arc _ _Common Spike			1		1
28	64528	.014 _ _Oth _ _Arc _ _Common Nails			1		1
29	64529	.018 _ _Oth _ _Arc _ _Machine Cut Nails			1		1
29	64529	.137 _ _Cer _ _Ind _ _Vitrified White Earthenware	Undecorated	None	1		1
30	64530	.018 _ _Oth _ _Arc _ _Machine Cut Nails			1		1
31	64531	.150 _ _Gls _ _Ind _ _Bottle Glass		Clear	1		1
				Total	76		

Abbreviation Description

Class (Cla)	Acronym
Aboriginal	Abo
Ceramics	Cer
Faunal	Fau

Artifact Catalogue Data from the Stage 2 Test Pits of the Norval Site 3

Table 13

FindSpot	ID	Ext _ _Cla _ _Fun _ _Description	Decoration	Colour	Pieces	Supplemental	Box #
		Floral	Flo				
		Glass	Gls				
		Other	Oth				

Function (Fun)	Acronym
Architectural	Arc
Ceramic	Cer
Chimney Glass	Chg
Currency	Cur
Cutlery	Cut
Fastener	Fas
Heat	Hea
Indeterminate	Ind
Jar Glass	Jar
Lithic	Lit
Markers Mark	Mam
Slate Fragment	Slt
Slate Pencil	Slp
Smoking	Smo
Soil Sample Heavy Fraction	SSH
Soil Sample Light Fraction	SSL
Thimble	Thi
Unidentified	Uni
Zero Artifacts	Zer

When function, makers mark or manufacture technique is known please see the Supplemental Table for complete description.

Summary List of Artifacts from Stage 2 Visual Survey of the Norval Site 4

Table 14

Class	Category	No.	%
Ceramic			
	Pearlware	9	60.00
	Refined White Earthenware	4	26.67
	Vitrified White Earthenware	1	6.67
Other			
	Pipe Bowl	1	6.67
	Totals	15	100.00

Artifact Catalogue Data from the Stage 2 Visual Survey of the Norval Site 4

Table 15

FindSpot	ID	Ext _ _ Cla _ _ Fun _ _ Description	Decoration	Colour	Pieces	Supplemental	Box #
1	65131	.117 _ _ Cer _ _ Ind _ _ Refined White Earthenware	Undecorated	None	2		1
1	65131	.080 _ _ Cer _ _ Ind _ _ Refined White Earthenware	Banded Industrial Slipware	Any	2		1
1	65131	.137 _ _ Cer _ _ Ind _ _ Vitrified White Earthenware	Undecorated	None	1		1
1	65131	.070 _ _ Cer _ _ Ind _ _ Pearlware	Undecorated		5		1
1	65131	.061 _ _ Cer _ _ Ind _ _ Pearlware	Painted	Monochrome	2	Pearlware hand painted monochrome blue-2;	1
1	65131	.064 _ _ Cer _ _ Ind _ _ Pearlware	Scalloped Edgware with Chickenclaw	Blue	1		1
1	65131	.060 _ _ Cer _ _ Ind _ _ Pearlware	Other	All	1	Pearlware rimline mono brown-1;	1
1	65131	.175 _ _ Oth _ _ Smo _ _ Pipe Bowl			1		1
					15		

Abbreviation Description

Class (Cla)	Acronym
Aboriginal	Abo
Ceramics	Cer
Faunal	Fau
Floral	Flo
Glass	Gls
Other	Oth

Function (Fun)	Acronym
Architectural	Arc
Ceramic	Cer
Chimney Glass	Chg
Currency	Cur
Cutlery	Cut
Fastener	Fas
Heat	Hea
Indeterminate	Ind
Jar Glass	Jar
Lithic	Lit
Markers Mark	Mam
Slate Fragment	Slf
Slate Pencil	Slp
Smoking	Smo
Soil Sample Heavy Fraction	SSH
Soil Sample Light Fraction	SSL
Thimble	Thi
Unidentified	Uni
Zero Artifacts	Zer

Artifact Catalogue Data from the Stage 2 Visual Survey of the Norval Site 4

When function, makers mark or manufacture technique is known please see the Supplemental Table for complete description.

Summary List of Artifacts from Stage 2 Visual Survey of the Norval Site 5

Table 16

Class	Category	No.	%
Ceramic			
	Vitrified White Earthenware	15	83.33
Glass			
	Bottle Glass	2	11.11
Other			
	Pipe Bowl	1	5.56
	Totals	18	100.00

Artifact Catalogue Data from the Stage 2 Visual Survey of the Norval Site 5

Table 17

FindSpot	ID	Ext _ _Cla _ _Fun _ _Description	Decoration	Colour	Pieces	Supplemental	Box #
1	65130	.153 _ _Gls _ _Ind _ _Bottle Glass		Olive	2		1
1	65130	.137 _ _Cer _ _Ind _ _Vitrified White Earthenware	Undecorated	None	7		1
1	65130	.132 _ _Cer _ _Ind _ _Vitrified White Earthenware	Transfer Print	Blue	4		1
1	65130	.129 _ _Cer _ _Ind _ _Vitrified White Earthenware	Sponge Stamped	Blue	4		1
1	65130	.175 _ _Oth _ _Smo _ _Pipe Bowl			1		1
				Total	18		

Abbreviation Description

Class (Cla)	Acronym
Aboriginal	Abo
Ceramics	Cer
Faunal	Fau
Floral	Flo
Glass	Gls
Other	Oth

Function (Fun)	Acronym
Architectural	Arc
Ceramic	Cer
Chimney Glass	Chg
Currency	Cur
Cutlery	Cut
Fastener	Fas
Heat	Hea
Indeterminate	Ind
Jar Glass	Jar
Lithic	Lit
Markers Mark	Mam
Slate Fragment	Slf
Slate Pencil	Slp
Smoking	Smo
Soil Sample Heavy Fraction	SSH

Artifact Catalogue Data from the Stage 2 Visual Survey of the Norval Site 5

Table 17

Soil Sample Light Fraction	SSL
Thimble	Thi
Unidentified	Uni
Zero Artifacts	Zer

When function, makers mark or manufacture technique is known please see the Supplemental Table for complete description.

Summary List of Artifacts from Stage 2 Visual Survey of the Norval 6 Site

Table 18

Class	Category	No.	%
Architectural			
	Thick Window Glass	5	4.72
Ceramic			
	Coarse Red Earthenware	11	10.38
	Pearlware	1	0.94
	Vitrified White Earthenware	66	62.26
Faunal			
	Bone Fragment	4	3.77
	Burned Bone	2	1.89
Glass			
	Bottle Glass	9	8.49
Other			
	Miscellaneous	1	0.94
	Pipe Bowl	1	0.94
	Pipe Stem	6	5.66
	Totals	106	100.00

Artifact Catalogue Data from the Stage 2 Visual Survey of the Norval 6 Site

Table 19

FindSpot	ID	Ext _ _Cla _ _Fun _ _Description	Decoration	Colour	Pieces	Supplemental	Box #
1	64601	.025 _ _Oth _ _Arc _ _Thick Window Glass			1		1
2	64602	.176 _ _Oth _ _Smo _ _Pipe Stem			1		1
3	64603	.120 _ _Cer _ _Ind _ _Vitrified White Earthenware	Bands Slipped	All	1		1
4	64604	.137 _ _Cer _ _Ind _ _Vitrified White Earthenware	Undecorated	None	1		1
5	64605	.129 _ _Cer _ _Ind _ _Vitrified White Earthenware	Sponge Stamped	Blue	1		1
6	64606	.043 _ _Cer _ _Ind _ _Coarse Red Earthenware	Glazed	Any	1		1
7	64607	.149 _ _Gls _ _Ind _ _Bottle Glass		Brown	1		1
8	64608	.137 _ _Cer _ _Ind _ _Vitrified White Earthenware	Undecorated	None	1		1
9	64609	.149 _ _Gls _ _Ind _ _Bottle Glass		Brown	1		1
10	64610	.127 _ _Cer _ _Ind _ _Vitrified White Earthenware	Painted	Polychrome	1	VWE painted polychrome green / blue-1;	1
11	64611	.137 _ _Cer _ _Ind _ _Vitrified White Earthenware	Undecorated	None	1		1
11	64611	.043 _ _Cer _ _Ind _ _Coarse Red Earthenware	Glazed	Any	1		1
12	64612	.149 _ _Gls _ _Ind _ _Bottle Glass		Brown	1		1
12	64612	.137 _ _Cer _ _Ind _ _Vitrified White Earthenware	Undecorated	None	2		1
12	64612	.028 _ _Fau _ _Uni _ _Bone Fragment			4		1
12	64612	.169 _ _Oth _ _Ind _ _Miscellaneous			1	Misc clear plastic fragment-1;	1
13	64613	.137 _ _Cer _ _Ind _ _Vitrified White Earthenware	Undecorated	None	3		1
13	64613	.127 _ _Cer _ _Ind _ _Vitrified White Earthenware	Painted	Polychrome	1	VWE hand painted polychrome red /green -1;	1
14	64614	.137 _ _Cer _ _Ind _ _Vitrified White Earthenware	Undecorated	None	1		1
14	64614	.176 _ _Oth _ _Smo _ _Pipe Stem			1		1
15	64615	.132 _ _Cer _ _Ind _ _Vitrified White Earthenware	Transfer Print	Blue	1		1
16	64616	.137 _ _Cer _ _Ind _ _Vitrified White Earthenware	Undecorated	None	2		1

Artifact Catalogue Data from the Stage 2 Visual Survey of the Norval 6 Site

Table 19

FindSpot	ID	Ext _ _ Cla _ _ Fun _ _ Description	Decoration	Colour	Pieces	Supplemental	Box #
16	64616	.124 _ _ Cer _ _ Ind _ _ Vitrified White Earthenware	Painted	Monochrome	1	VWE hand painted monochrome purple-1;	1
16	64616	.043 _ _ Cer _ _ Ind _ _ Coarse Red Earthenware	Glazed	Any	1		1
17	64617	.137 _ _ Cer _ _ Ind _ _ Vitrified White Earthenware	Undecorated	None	3		1
17	64617	.121 _ _ Cer _ _ Ind _ _ Vitrified White Earthenware	Edgeware	Blue	1		1
17	64617	.176 _ _ Oth _ _ Smo _ _ Pipe Stem			1		1
18	64618	.129 _ _ Cer _ _ Ind _ _ Vitrified White Earthenware	Sponge Stamped	Blue	1		1
18	64618	.070 _ _ Cer _ _ Ind _ _ Pearlware	Undecorated		1		1
18	64618	.043 _ _ Cer _ _ Ind _ _ Coarse Red Earthenware	Glazed	Any	2		1
18	64618	.176 _ _ Oth _ _ Smo _ _ Pipe Stem			1		1
19	64619	.137 _ _ Cer _ _ Ind _ _ Vitrified White Earthenware	Undecorated	None	5		1
19	64619	.129 _ _ Cer _ _ Ind _ _ Vitrified White Earthenware	Sponge Stamped	Blue	1		1
20	64620	.137 _ _ Cer _ _ Ind _ _ Vitrified White Earthenware	Undecorated	None	2		1
21	64621	.149 _ _ Gl _ _ Ind _ _ Bottle Glass		Brown	1		1
21	64621	.137 _ _ Cer _ _ Ind _ _ Vitrified White Earthenware	Undecorated	None	2		1
21	64621	.126 _ _ Cer _ _ Ind _ _ Vitrified White Earthenware	Other	Other	1	VWE slipware dendritic -1;	1
21	64621	.043 _ _ Cer _ _ Ind _ _ Coarse Red Earthenware	Glazed	Any	1		1
22	64622	.137 _ _ Cer _ _ Ind _ _ Vitrified White Earthenware	Undecorated	None	3		1
22	64622	.135 _ _ Cer _ _ Ind _ _ Vitrified White Earthenware	Transfer Print	Other	1	VWE TP purple-1:	1
22	64622	.043 _ _ Cer _ _ Ind _ _ Coarse Red Earthenware	Glazed	Any	1		1
22	64622	.029 _ _ Fau _ _ Uni _ _ Burned Bone			1		1
23	64623	.137 _ _ Cer _ _ Ind _ _ Vitrified White Earthenware	Undecorated	None	1		1
23	64623	.176 _ _ Oth _ _ Smo _ _ Pipe Stem			1		1
24	64624	.129 _ _ Cer _ _ Ind _ _ Vitrified White Earthenware	Sponge Stamped	Blue	1		1
24	64624	.043 _ _ Cer _ _ Ind _ _ Coarse Red Earthenware	Glazed	Any	1		1
25	64625	.137 _ _ Cer _ _ Ind _ _ Vitrified White Earthenware	Undecorated	None	1		1
26	64626	.121 _ _ Cer _ _ Ind _ _ Vitrified White Earthenware	Edgeware	Blue	1		1
27	64627	.120 _ _ Cer _ _ Ind _ _ Vitrified White Earthenware	Bands Slipped	All	1		1
28	64628	.132 _ _ Cer _ _ Ind _ _ Vitrified White Earthenware	Transfer Print	Blue	1		1

Catalogue # = ID _ | _ Ext

Artifact Catalogue Data from the Stage 2 Visual Survey of the Norval 6 Site

Table 19

FindSpot	ID	Ext _ _ Cla _ _ Fun _ _ Description	Decoration	Colour	Pieces	Supplemental	Box #
29	64629	.129 _ _ Cer _ _ Ind _ _ Vitrified White Earthenware	Sponge Stamped	Blue	1		1
30	64630	.025 _ _ Oth _ _ Arc _ _ Thick Window Glass			1		1
30	64630	.132 _ _ Cer _ _ Ind _ _ Vitrified White Earthenware	Transfer Print	Blue	2		1
30	64630	.176 _ _ Oth _ _ Smo _ _ Pipe Stem			1		1
31	64631	.137 _ _ Cer _ _ Ind _ _ Vitrified White Earthenware	Undecorated	None	1		1
32	64632	.137 _ _ Cer _ _ Ind _ _ Vitrified White Earthenware	Undecorated	None	3		1
33	64633	.137 _ _ Cer _ _ Ind _ _ Vitrified White Earthenware	Undecorated	None	1		1
33	64633	.135 _ _ Cer _ _ Ind _ _ Vitrified White Earthenware	Transfer Print	Other	1	VWE TP purple-1;	1
33	64633	.043 _ _ Cer _ _ Ind _ _ Coarse Red Earthenware	Glazed	Any	1		1
34	64634	.150 _ _ Gl _ _ Ind _ _ Bottle Glass		Clear	1		1
34	64634	.137 _ _ Cer _ _ Ind _ _ Vitrified White Earthenware	Undecorated	None	1		1
34	64634	.043 _ _ Cer _ _ Ind _ _ Coarse Red Earthenware	Glazed	Any	1		1
35	64635	.129 _ _ Cer _ _ Ind _ _ Vitrified White Earthenware	Sponge Stamped	Blue	1		1
36	64636	.137 _ _ Cer _ _ Ind _ _ Vitrified White Earthenware	Undecorated	None	1		1
37	64637	.025 _ _ Oth _ _ Arc _ _ Thick Window Glass			2		1
37	64637	.123 _ _ Cer _ _ Ind _ _ Vitrified White Earthenware	Flow	Blue	1		1
38	64638	.150 _ _ Gl _ _ Ind _ _ Bottle Glass		Clear	1		1
39	64639	.137 _ _ Cer _ _ Ind _ _ Vitrified White Earthenware	Undecorated	None	1		1
39	64639	.029 _ _ Fau _ _ Uni _ _ Burned Bone			1		1
40	64640	.153 _ _ Gl _ _ Ind _ _ Bottle Glass		Olive	1		1
41	64641	.043 _ _ Cer _ _ Ind _ _ Coarse Red Earthenware	Glazed	Any	1		1
42	64642	.175 _ _ Oth _ _ Smo _ _ Pipe Bowl			1		1
43	64643	.149 _ _ Gl _ _ Ind _ _ Bottle Glass		Brown	1	BG brown machine made crown finish >1900 -1:	1
44	64644	.129 _ _ Cer _ _ Ind _ _ Vitrified White Earthenware	Sponge Stamped	Blue	1		1
45	64645	.137 _ _ Cer _ _ Ind _ _ Vitrified White Earthenware	Undecorated	None	1		1

Artifact Catalogue Data from the Stage 2 Visual Survey of the Norval 6 Site

Table 19

FindSpot	ID	Ext _ _ Cla _ _ Fun _ _ Description	Decoration	Colour	Pieces	Supplemental	Box #
46	64646	.127_ _ Cer _ _ Ind _ _ Vitrified White Earthenware	Painted	Polychrome	1	VWE hand painted polychrome green / red / black-1;	1
47	64647	.129_ _ Cer _ _ Ind _ _ Vitrified White Earthenware	Sponge Stamped	Blue	1		1
48	64648	.150_ _ GlS _ _ Ind _ _ Bottle Glass		Clear	1		1
48	64648	.137_ _ Cer _ _ Ind _ _ Vitrified White Earthenware	Undecorated	None	1		1
49	64649	.129_ _ Cer _ _ Ind _ _ Vitrified White Earthenware	Sponge Stamped	Blue	1		1
50	64650	.137_ _ Cer _ _ Ind _ _ Vitrified White Earthenware	Undecorated	None	1		1
51	64651	.129_ _ Cer _ _ Ind _ _ Vitrified White Earthenware	Sponge Stamped	Blue	1		1
52	64652	.129_ _ Cer _ _ Ind _ _ Vitrified White Earthenware	Sponge Stamped	Blue	1		1
53	64653	.025_ _ Oth _ _ Arc _ _ Thick Window Glass			1		1
				Total	106		

Abbreviation Description

Class (Cla)	Acronym
Aboriginal	Abo
Ceramics	Cer
Faunal	Fau
Floral	Flo
Glass	Gls
Other	Oth

Function (Fun)	Acronym
Architectural	Arc
Ceramic	Cer
Chimney Glass	Chg
Currency	Cur
Cutlery	Cut
Fastener	Fas
Heat	Hea

Catalogue # = ID_|_Ext

Artifact Catalogue Data from the Stage 2 Visual Survey of the Norval 6 Site

Table 19

FindSpot	ID	Ext _ _Cla_ _Fun_ _Description	Decoration	Colour	Pieces	Supplemental	Box #
		Indeterminate	Ind				
		Jar Glass	Jar				
		Lithic	Lit				
		Markers Mark	Mam				
		Slate Fragment	Slt				
		Slate Pencil	Slp				
		Smoking	Smo				
		Soil Sample Heavy Fraction	SSH				
		Soil Sample Light Fraction	SSL				
		Thimble	Thi				
		Unidentified	Uni				
		Zero Artifacts	Zer				

When function, makers mark or manufacture technique is known please see the Supplemental Table for complete description.

Summary List of Artifacts from Stage 2 Visual Survey of the Norval Findspots

Table 20

Class	Category	No.	%
Aboriginal			
	Chert Flake	4	100
	Totals	4	100

Artifact Catalogue Data from the Stage 2 Visual Survey of the Norval Findspots

Table 21

FindSpot	ID	Ext _ _ Cla _ _ Fun _ _ Description	No.	Supplemental	Box #
1	61960	.005_ _ ABO_ _ Lit_ _ Chert Flake	1	Secondary flake Onondaga Chert-1;	1
2	61961	.005_ _ ABO_ _ Lit_ _ Chert Flake	1	Secondary flake thermally altered Onondaga chert-1;	1
3	61962	.005_ _ ABO_ _ Lit_ _ Chert Flake	1	Secondary flake hinge fracture Onondaga chert-1;	1
4	61964	.005_ _ ABO_ _ Lit_ _ Chert Flake	1	Secondary flake Onondaga chert-1;	1
		Total	4		

Abbreviation Description

Class (Cla)	Acronym
Aboriginal	Abo
Ceramics	Cer
Faunal	Fau
Floral	Flo
Glass	Gls
Other	Oth

Function (Fun)	Acronym
Architectural	Arc
Ceramic	Cer
Chimney Glass	Chg
Currency	Cur
Cutlery	Cut
Fastener	Fas
Heat	Hea
Indeterminate	Ind
Jar Glass	Jar
Lithic	Lit
Markers Mark	Mam
Slate Fragment	Slf
Slate Pencil	Slp
Smoking	Smo
Soil Sample Heavy Fraction	SSH
Soil Sample Light Fraction	SSL

Catalogue # = ID_ | _ Ext

Table 21

Artifact Catalogue Data from the Stage 2 Visual Survey of the Norval Findspots

Thimble	Thi
Unidentified	Uni
Zero Artifacts	Zer

When function, makers mark or manufacture technique is known please see the Supplemental Table for complete