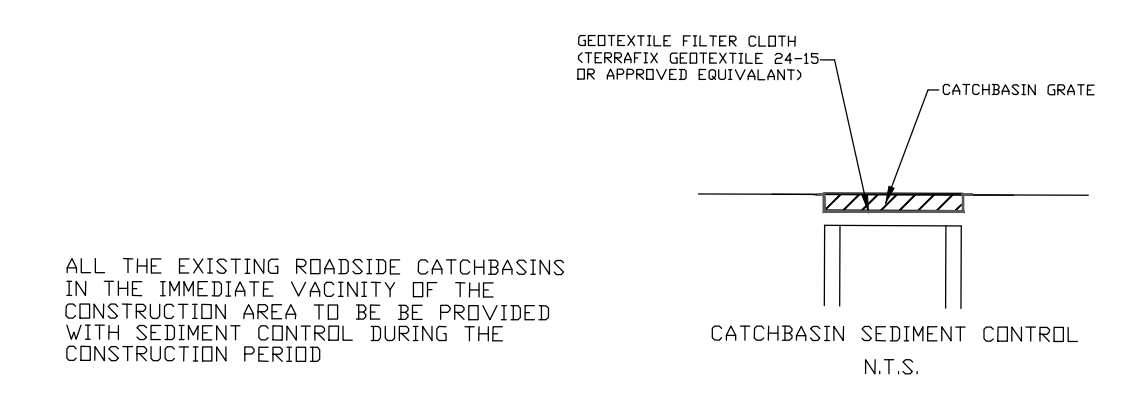
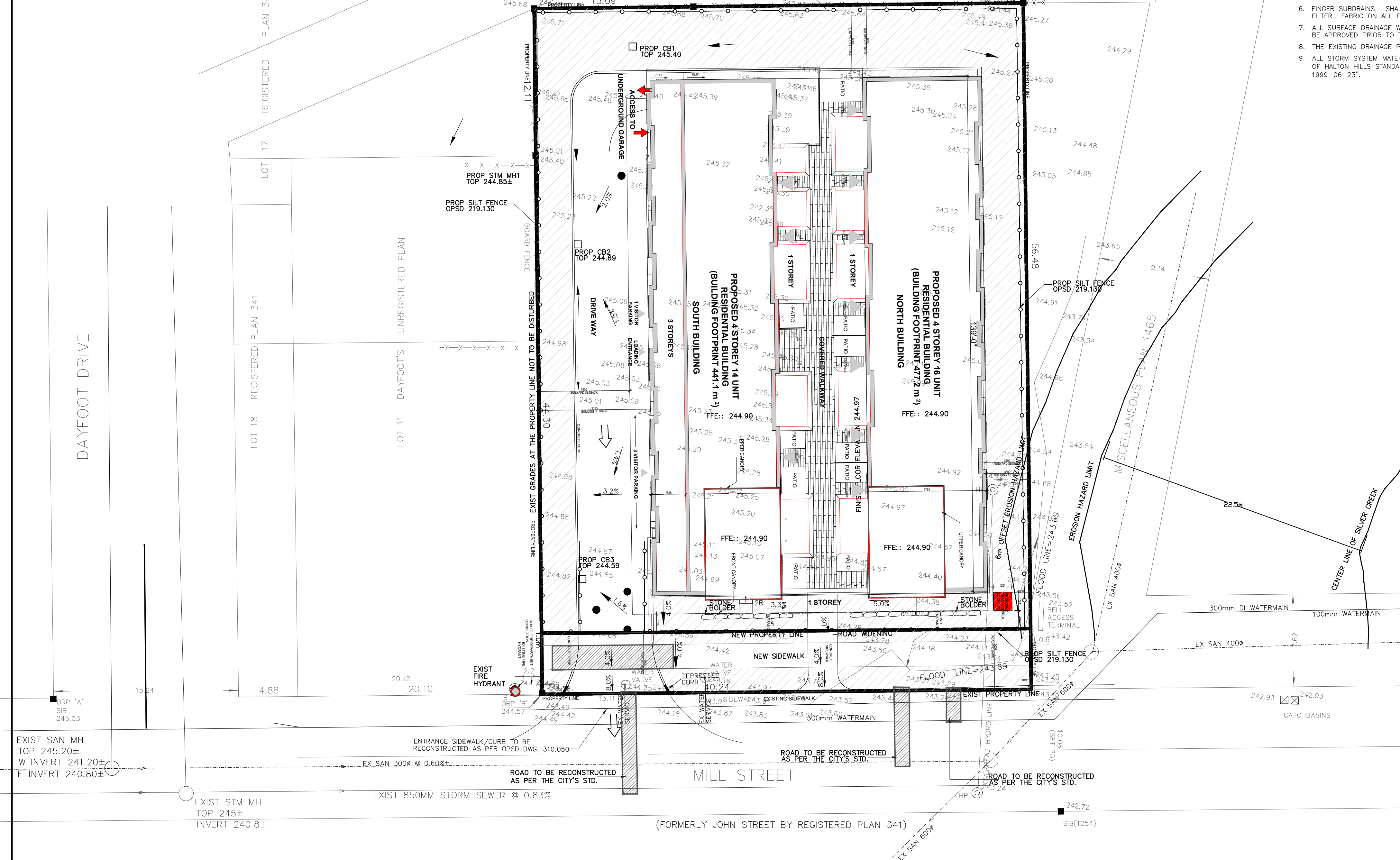
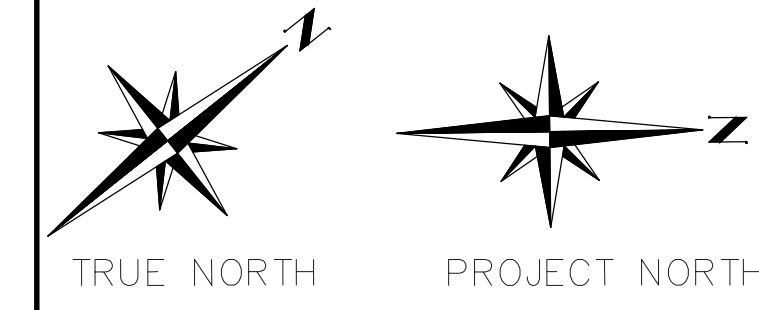
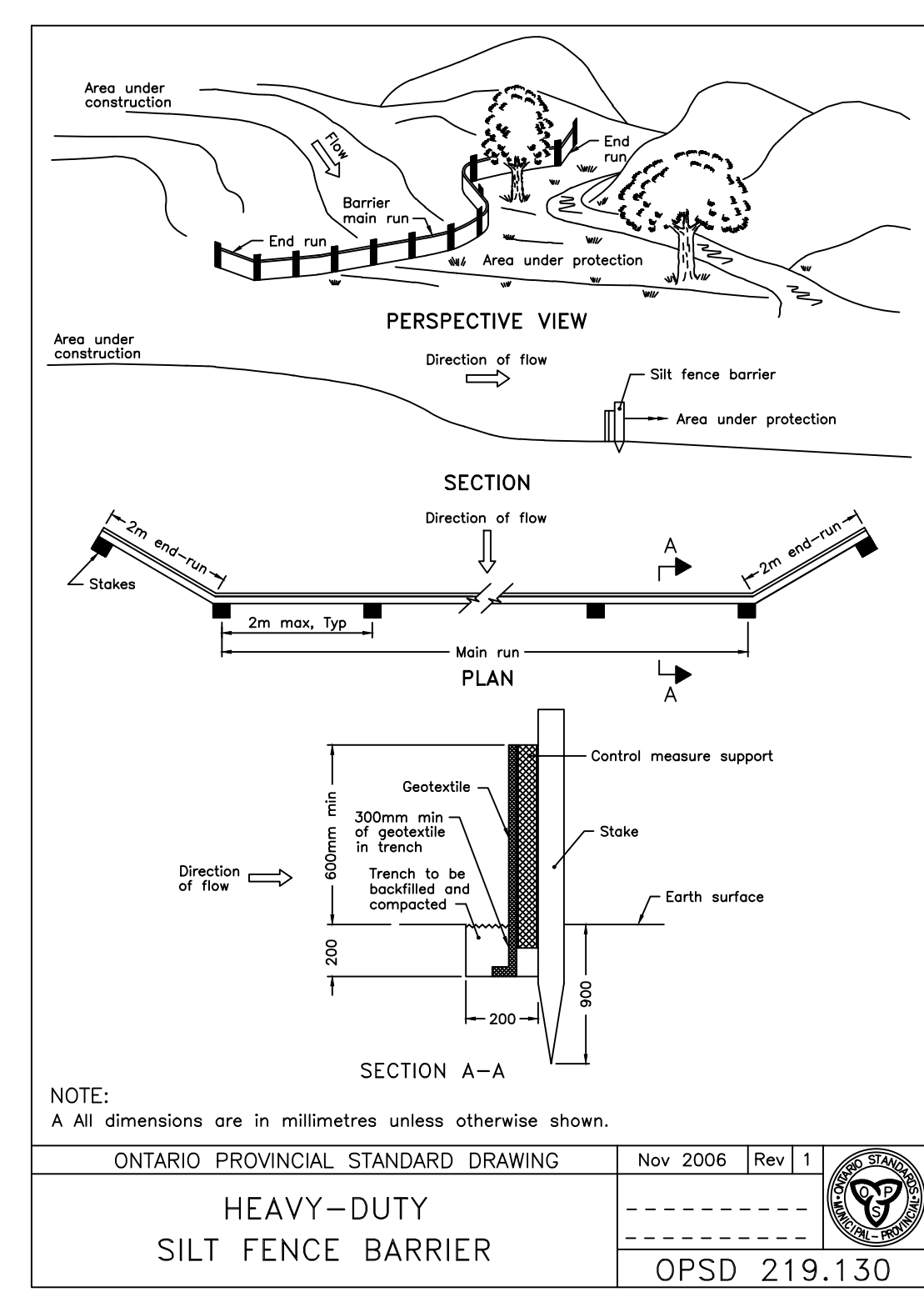
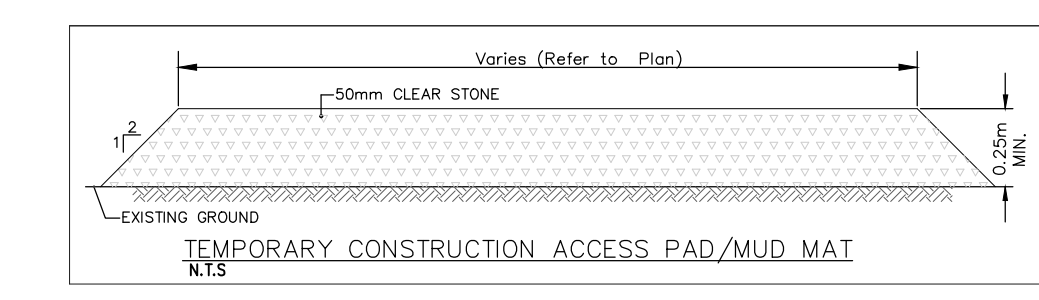


KEY MAP



ALL THE EXISTING ROADSIDE CATCHBASINS IN THE IMMEDIATE VICINITY OF THE CONSTRUCTION AREA TO BE PROVIDED WITH SEDIMENT CONTROL DURING THE CONSTRUCTION PERIOD

- SILTATION CONTROL DURING CONSTRUCTION. DURING CONSTRUCTION AND UNTIL SUCH TIME AS THE SITE HAS BEEN PAVED, GRAVELLED AND SODDED, THE CONTRACTOR SHALL PREVENT STORM WATER RUNOFF FROM DIRECTLY ENTERING THE MUNICIPAL STORM SYSTEM.
- SILT FENCE SHALL BE ERECTED AS PER DETAIL PROVIDED AND MAINTAINED UNTIL THE SITE IS COMPLETELY SODDED.
- STRAW BALES SHOULD BE ERECTED ALONG THE EXISTING DITCH AND MAINTAINED UNTIL THE SITE IS COMPLETELY SODDED.
- SILTATION CONTROLS ARE TO BE IN PLACE PRIOR TO THE START OF SITE WORKS, AND TO BE MAINTAINED FOR THE DURATION OF CONSTRUCTION.



NOTE: A All dimensions are in millimetres unless otherwise shown.
ONTARIO PROVINCIAL STANDARD DRAWING Nov 2006 Rev 1
HEAVY-DUTY SILT FENCE BARRIER
OPSD 219.130

BENCHMARK NOTE:

NOTES
ELEVATIONS ARE GEODETIC, DERIVED FROM SIMULTANEOUS OBSERVATIONS OF SATELLITES, AS CORRECTED BY NRCAN'S PPP SERVICE, AND HAVE BEEN CONVERTED FROM THE FROM THE CGVD2013 DATUM TO THE CGVD1978 DATUM.

LEGEND

- PROP STM MH PROPOSED STORM MAINTENANCE HOLE
- PROP SAN MH PROPOSED SANITARY MAINTENANCE HOLE
- PROP CB PROPOSED CATCH BASIN
- ⊕ PROPOSED DETECTOR CHECK VALVE
- ⊙ PROPOSED DOMESTIC WATER METER
- ⊗ PROPOSED BACK CHECK VALVE

POINT ID	ELEVATION
ORP 'A'	245.03
ORP 'B'	244.57

DRAINAGE NOTES

- BACKFILL AROUND MANHOLES AND CATCHBASINS SHALL BE OF MINIMUM 1.5 M APPROVED, GRANULAR MATERIAL, COMPACTED BY MECHANICAL MEANS TO 100% S.P.M.D.D.
- STORM MANHOLES SHALL BE AS PER O.P.S.D. 701.30 TO 701.060 INCLUSIVE. FRAMES AND LIDS TO BE PER O.P.S.D. 401.01.
- CATCHBASINS SHALL BE AS PER OPSD. 705.010 WITH FRAME AND GRATES AS PER OPSD. 400.110. CATCHBASIN CONNECTIONS SHALL BE AS PER OPSD. 708.030. CB LEAD - 250mm DIA. PVC SDR-35, CONFORMING TO CSA SPECIFICATION B182.2 AND B182.4 OR LATEST REVISION THEREOF.
- ALL LATERALS TO BE CONNECTED TO THE NEW PIPE USING MANUFACTURED TEE AND TO THE EXISTING PIPE USING PRE-MANUFACTURED SADDLE AND STAINLESS STEEL STRAP. MARKERS SHALL BE PROVIDED AT THE END OF PIPE FOR ALL SERVICES.
- ALL STORM SEWERS SHALL BE CONCRETE PIPE, STORM SEWER OF 375mm DIA OR LESS MAY BE SUBSTITUTED TO POLYVINYL CHLORIDE (P.V.C.) UPON APPROVAL FROM THE TOWN OF HALTON HILLS ENGINEERING DEPARTMENT. ALL PVC STORM SEWER WITH FITTINGS SHALL MEET THE CSA AND ASTM REQUIREMENTS AS NOTED WITHIN OPSD 1841. THE BASIC MANUFACTURE MATERIAL OF THE PIPE SHALL CONFORM TO ASTM D-3034 AND OPS1841.
- FINGER SUBDRAINS, SHALL BE 100mm DIA., 6.0m MIN. LENGTH, PERFORATED & WRAPPED IN FILTER FABRIC ON ALL FOUR SIDES.
- ALL SURFACE DRAINAGE WILL BE SELF CONTAINED, COLLECTED AND DISCHARGED AT A LOCATION TO BE APPROVED PRIOR TO THE ISSUANCE OF A BUILDING PERMIT.
- THE EXISTING DRAINAGE PATTERN WILL BE MAINTAINED EXCEPT NOTED.
- ALL STORM SYSTEM MATERIAL, MANUFACTURE, METHOD OF CONSTRUCTION SHALL CONFORM WITH CITY OF HALTON HILLS STANDARDS AS PER "TOWN OF HALTON HILLS SUBDIVISION MANUAL, 1999-06-23".

BENCHMARK NOTE

TOPOGRAPHIC INFORMATION MEASURED 2007. THIS IS NOT A PLAN OF SURVEY.
BENCHMARK: HHM 064
ELEVATION: 253.45
TEMPORARY BENCHMARK
ELEVATION: 254.28
TOP OF RAILROAD SPIKE IN THE SOUTH SIDE OF THE FIRS HYDRO POLE EAST OF NORMANDY BOULEVARD ON GUELPH STREET.
The location and extent of all existing utilities are not necessarily shown on this plan, and where shown, are to be considered approximate only. All Contractors shall inform themselves of the exact location and extent of all existing services prior to the start of construction, and shall assume all liabilities for damage to them or delays resulting from their actual extent and location.

LEGEND

SYMBOL	DESCRIPTION
LS	LIGHT STANDARD
TL	TRAFFIC LIGHT
S	SIGN
B	BELL POLE
HP	HYDRO POLE
HD	HYDRANT
GA	GUY AND ANCHOR
ME	MANHOLE EXISTING
MP	MANHOLE PROPOSED
CB	CATCHBASIN EXISTING
CP	CATCHBASIN PROPOSED
SIB	STANDARD IRON BAR
H	HYDRO CABLES
W	WATERMANS
G	GASMANS
B	BELL CABLES
CP	CAP OR PLUG
SS	SANITARY SEWER
SS	STORM SEWER
SS	COMBINED SEWER

TOWN OF HALTON HILLS
REGION OF HALTON
PREMIER ENGINEERING SOLUTIONS
CIVIL ENGINEERS
3294 ALPACA AVENUE, MISSISSAUGA ONTARIO L5M 7Y3
PHONE: (905) 817-1294 FAX: (905) 817-1299

REGISTERED PROFESSIONAL ENGINEER
M F ISMAIL
APR 29, 2022
PROVINCE OF ONTARIO
PROJECT ENGINEER

RESIDENTIAL DEVELOPMENT
16-18 MILL STREET
HALTON HILLS, ON
EROSION AND SEDIMENT CONTROL PLAN

FIELD NOTES
DATE
SCALE 1:200
DWG No. ESC 003
MUN. REF. No.
SITE PLAN APPLICATION 2

NO.	REVISION	DATE	INIT.
2	ISSUED FOR APPROVAL	APR 29 2022	MFI
1	ISSUED FOR APPROVAL	DEC 09 2020	MFI