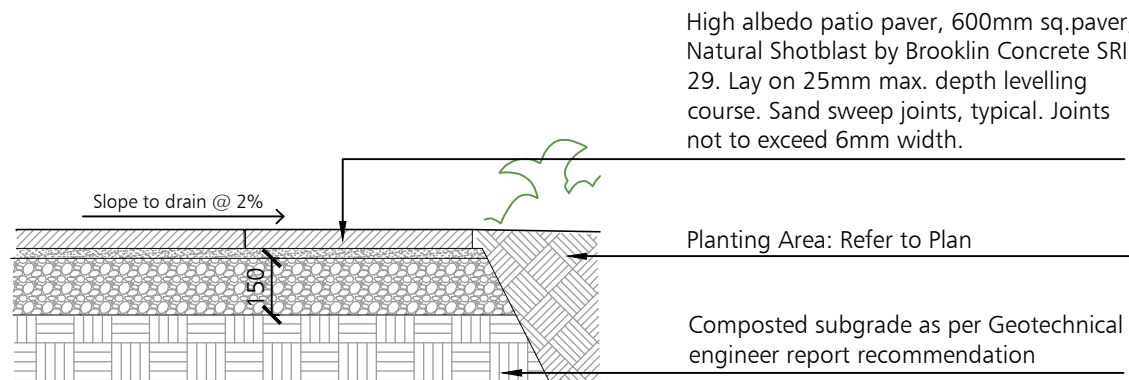
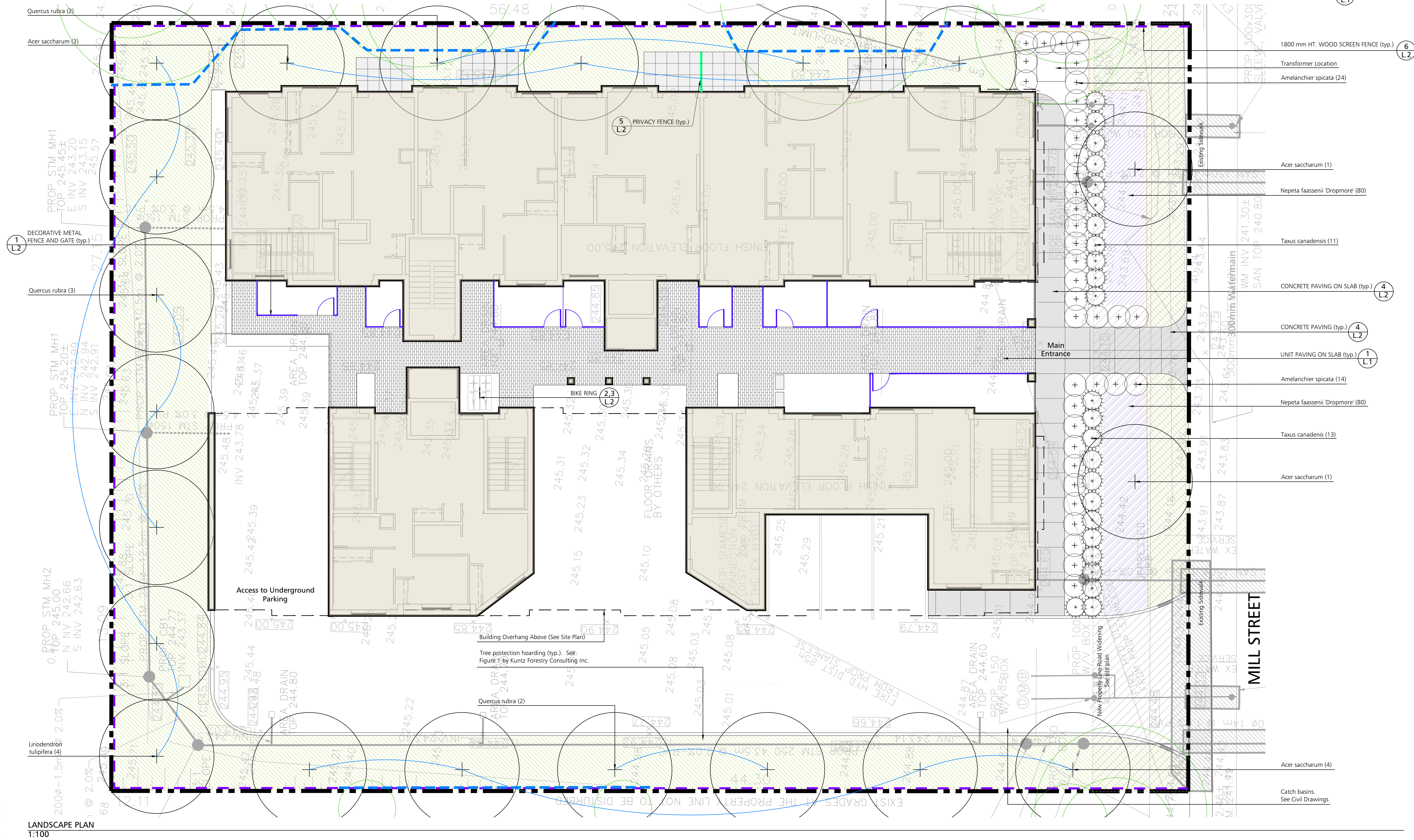
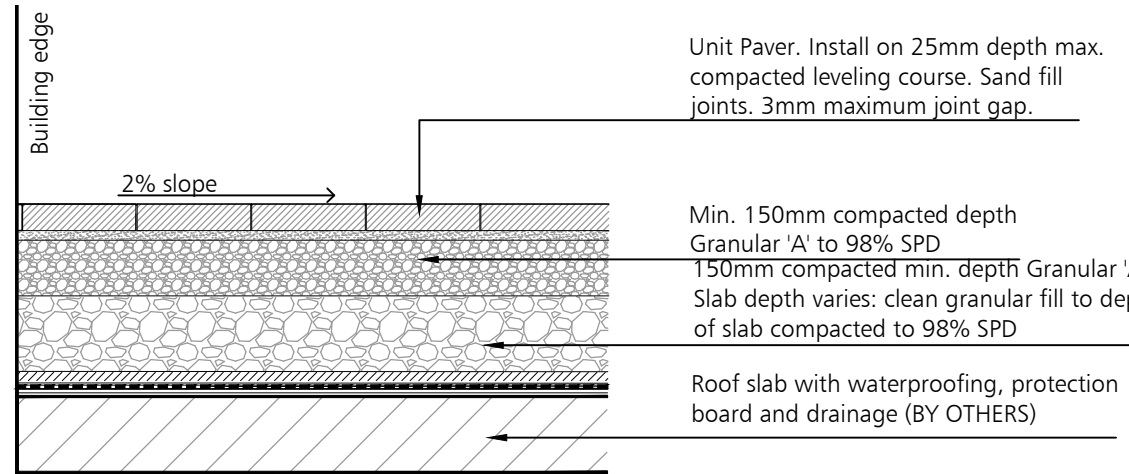


PLANT LIST					
Botanical Name	Common Name	QTY.	Caliper (dbh)	Height/Spread	Condition
TREES					
Acer saccharum	Sugar Maple	9	60mm		WB/B&B
Quercus rubra	Red Oak	7	60mm		WB/B&B
Liriodendron tulipifera	Tulip Tree	4	60mm		WB/B&B
SHRUBS					
Amelanchier spicata	Running Serviceberry	38		60cm ht.	3 g pot
Taxus canadensis	Canadian Yew	24		60cm spr.	3 g pot
PERENNIALS, GRASSSESS AND GROUNDCOVER					
Nepeta faassenii 'Dropmore'	Catmint	160			1 g pot

- NOTES:
- Plant material to conform to the Canadian Nursery Trades association metric Guide Specifications for Nursery Stock, latest edition.
 - Contractor to verify quantities listed: plant quantities to be supplied as shown in plan in case of discrepancies between plan and quantities listed.
 - All plant material to be sourced from nurseries with an 800km radius.
 - Provide 2 year warranty for all plant material.



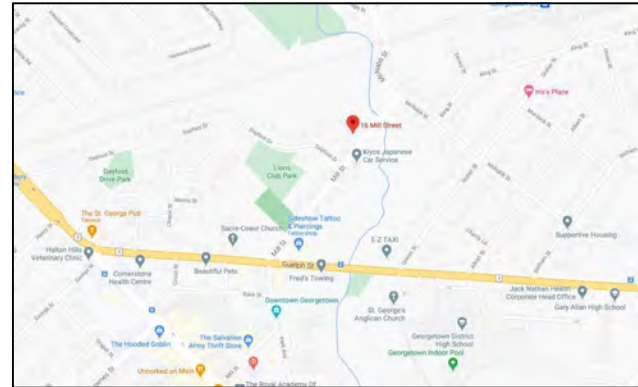
Patio Pavers
1:20



Unit Paving
1:20

- NOTES:
- Unit paver to be 100mm x 300mm x 100mm thick Promenade by Unilock or equal.
 - Type A: Colour: Opal | Pattern: Running Bond
 - Type B: Colour: Steel Grey Blend | Pattern: Running Bond
 - Refer to plan for paving pattern.
 - Lay Paver from building face out cutting pavers at planter curb edge.
 - Contain at soft landscape edge with paver restraint system, Brickstop by Unilock or equal.

KEY PLAN



LEGEND

- Property Line
- Overhead Canopy
- 1800mm Ht. Wood Screen Fence
- Decorative Metal Fence
- Privacy Fence
- Proposed Deciduous Tree
- Proposed Deciduous Shrubs
- Proposed Evergreen Shrubs
- Road Widening Area
- Concrete Paving
- Asphalt Paving
- Unit Paving
- 150mm Depth Topsoil, Fine Grade and Sod
- Perennials
- Ornamental Grasses
- Bike Ring
- Tree protection hoarding

Note: All Drawings by Baker Turner inc. to be Printed in Colour.

REVISIONS

DATE	DESCRIPTION
2024.09.19	Issued for Submission
2022.05.05	Issued for Submission
2020.12.10	Issued for Submission
2020.10.29	Issued for Submission
2020.09.03	Issued for Client Review

DATE DESCRIPTION

NOTE: Contractor is to check and verify all dimensions and conditions on the project, and is to immediately report any discrepancies to the landscape architect before proceeding with the work.



Landscape Architecture 1 Site Design

Suite 234
2010 Winston Park Drive
Oakville Ontario L6H 5R7
Tel: (289) 291-7620
email: tba@bakerturner.com

Project Title

Mill Street Residential

Mill Street Residential

16 & 18 Mill Street

Georgetown, ON

Landscape Plan

Date	Issued
August 2020	
Job Number	Drawn By
BTI-1517	AS
Scale	Checked By
As Shown	MT
Sheet Number	File Number
L1 of 2	FILE NO.